

**KLC1 Antibody (Center)**  
**Affinity Purified Rabbit Polyclonal Antibody (Pab)**  
**Catalog # AP8637c****Specification**

---

**KLC1 Antibody (Center) - Product Information**

Application	WB, FC, IHC-P,E
Primary Accession	<a href="#">Q07866</a>
Other Accession	<a href="#">P37285</a>
Reactivity	Human
Predicted	Rat
Host	Rabbit
Clonality	Polyclonal
Isotype	Rabbit IgG
Antigen Region	389-415

**KLC1 Antibody (Center) - Additional Information****Gene ID** 3831**Other Names**

Kinesin light chain 1, KLC 1, KLC1, KLC, KNS2

**Target/Specificity**

This KLC1 antibody is generated from rabbits immunized with a KLH conjugated synthetic peptide between 389-415 amino acids from the Central region of human KLC1.

**Dilution**

WB~~1:1000

FC~~1:10~50

IHC-P~~1:100

E~~Use at an assay dependent concentration.

**Format**

Purified polyclonal antibody supplied in PBS with 0.09% (W/V) sodium azide. This antibody is purified through a protein A column, followed by peptide affinity purification.

**Storage**

Maintain refrigerated at 2-8°C for up to 2 weeks. For long term storage store at -20°C in small aliquots to prevent freeze-thaw cycles.

**Precautions**

KLC1 Antibody (Center) is for research use only and not for use in diagnostic or therapeutic procedures.

**KLC1 Antibody (Center) - Protein Information****Name** KLC1

**Synonyms** KLC, KNS2

**Function** Kinesin is a microtubule-associated force-producing protein that may play a role in organelle transport (PubMed:[21385839](#)). The light chain may function in coupling of cargo to the heavy chain or in the modulation of its ATPase activity (By similarity).

**Cellular Location**

Cell projection, growth cone {ECO:0000250|UniProtKB:P37285}. Cytoplasmic vesicle. Cytoplasm, cytoskeleton

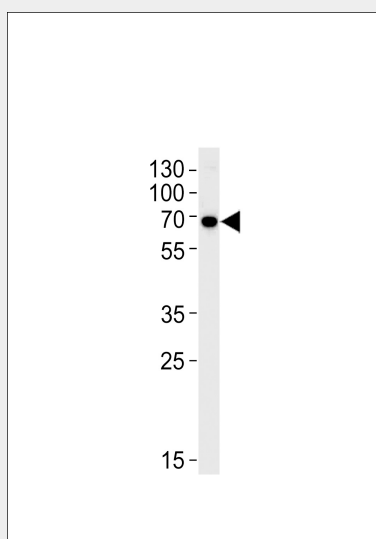
**Tissue Location**

Found in a variety of tissues. Mostly abundant in brain and spine.

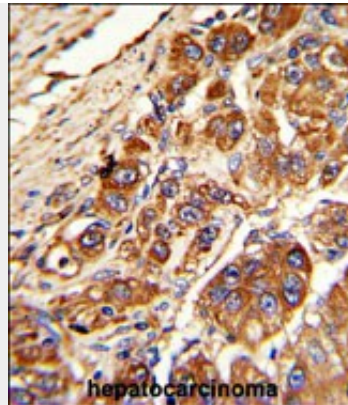
**KLC1 Antibody (Center) - Protocols**

Provided below are standard protocols that you may find useful for product applications.

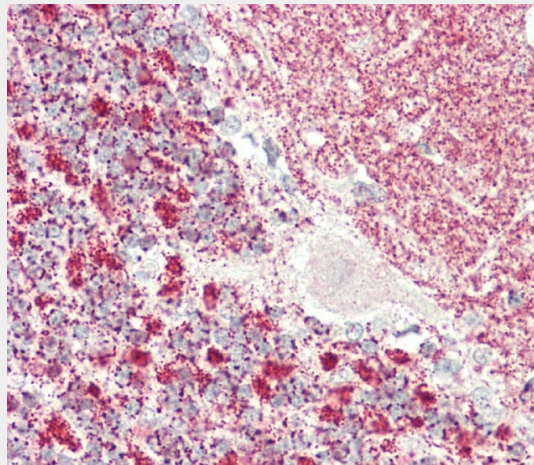
- [Western Blot](#)
- [Blocking Peptides](#)
- [Dot Blot](#)
- [Immunohistochemistry](#)
- [Immunofluorescence](#)
- [Immunoprecipitation](#)
- [Flow Cytometry](#)
- [Cell Culture](#)

**KLC1 Antibody (Center) - Images**

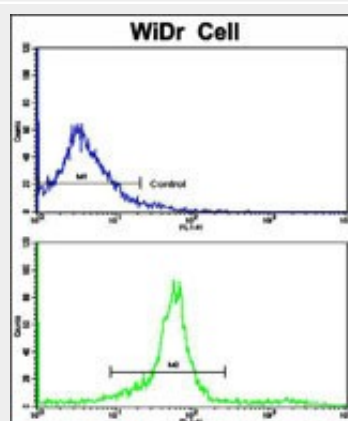
KLC1 Antibody (Center) (Cat.# AP8637c) western blot analysis in HeLa cell line lysates (35ug/lane). This demonstrates the KLC1 antibody detected the KLC1 protein (arrow).



Formalin-fixed and paraffin-embedded human hepatocarcinoma with KLC1 Antibody (Center), which was peroxidase-conjugated to the secondary antibody, followed by DAB staining. This data demonstrates the use of this antibody for immunohistochemistry; clinical relevance has not been evaluated.



Formalin-fixed and paraffin-embedded H.brain, H.cerebellum tissue reacted with KLC1 Antibody (Center) (Cat#AP8637c).



Flow cytometric analysis of wiDr cells using KLC1 Antibody (Center)(bottom histogram) compared to a negative control cell (top histogram). FITC-conjugated goat-anti-rabbit secondary antibodies were used for the analysis.

### KLC1 Antibody (Center) - Background

Kinesin is a microtubule-associated force-producing protein that may play a role in organelle transport. The light chain may function in coupling of cargo to the heavy chain or in the modulation

of its ATPase activity.

#### **KLC1 Antibody (Center) - References**

Chernajovsky, Y., et.al., DNA Cell Biol. 15 (11), 965-974 (1996) Gyoeva, F.K., et.al., J. Cell. Sci. 113 (PT 11), 2047-2054 (2000)

#### **KLC1 Antibody (Center) - Citations**

- [Alterations in axonal transport motor proteins in sporadic and experimental Parkinson's disease.](#)