

**Beclin1-BH3 Domain Antibody**  
**Affinity Purified Rabbit Polyclonal Antibody (Pab)**  
**Catalog # AP8653a****Specification**

---

**Beclin1-BH3 Domain Antibody - Product Information**

Application	FC, IHC-P, WB,E
Primary Accession	<a href="#">Q14457</a>
Other Accession	<a href="#">Q6GP52</a> , <a href="#">Q91XJ1</a> , <a href="#">Q4A1L5</a> , <a href="#">O88597</a> , <a href="#">Q5ZKS6</a> , <a href="#">Q4A1L4</a>
Reactivity	Human, Mouse
Predicted	Bovine, Chicken, Pig, Rat, Xenopus
Host	Rabbit
Clonality	Polyclonal
Isotype	Rabbit IgG
Calculated MW	51896
Antigen Region	95-132

**Beclin1-BH3 Domain Antibody - Additional Information****Gene ID** 8678**Other Names**

Beclin-1, Coiled-coil myosin-like BCL2-interacting protein, Protein GT197, BECN1, GT197

**Target/Specificity**

This Beclin1 antibody is generated from rabbits immunized with a KLH conjugated synthetic peptide between 95-132 amino acids from human Beclin1.

**Dilution**

FC~~1:10~50

IHC-P~~1:50~100

WB~~1:1000

E~~Use at an assay dependent concentration.

**Format**

Purified polyclonal antibody supplied in PBS with 0.09% (W/V) sodium azide. This antibody is purified through a protein A column, followed by peptide affinity purification.

**Storage**

Maintain refrigerated at 2-8°C for up to 2 weeks. For long term storage store at -20°C in small aliquots to prevent freeze-thaw cycles.

**Precautions**

Beclin1-BH3 Domain Antibody is for research use only and not for use in diagnostic or therapeutic procedures.

**Beclin1-BH3 Domain Antibody - Protein Information**

**Name** BECN1

**Synonyms** GT197

**Function** Plays a central role in autophagy (PubMed:[18570871](#), PubMed:[21358617](#), PubMed:[23184933](#), PubMed:[23974797](#), PubMed:[25484083](#), PubMed:[28445460](#), PubMed:[37776275](#)). Acts as a core subunit of the PI3K complex that mediates formation of phosphatidylinositol 3-phosphate; different complex forms are believed to play a role in multiple membrane trafficking pathways: PI3KC3-C1 is involved in initiation of autophagosomes and PI3KC3-C2 in maturation of autophagosomes and endocytosis. Involved in regulation of degradative endocytic trafficking and required for the abscission step in cytokinesis, probably in the context of PI3KC3-C2 (PubMed:[20208530](#), PubMed:[20643123](#), PubMed:[23974797](#), PubMed:[26783301](#)). Essential for the formation of PI3KC3-C2 but not PI3KC3-C1 PI3K complex forms. Involved in endocytosis (PubMed:[25275521](#)). May play a role in antiviral host defense.

**Cellular Location**

Cytoplasm. Golgi apparatus, trans-Golgi network membrane; Peripheral membrane protein. Endosome membrane; Peripheral membrane protein. Endoplasmic reticulum membrane; Peripheral membrane protein. Mitochondrion membrane; Peripheral membrane protein. Endosome {ECO:0000250|UniProtKB:O88597} Cytoplasmic vesicle, autophagosome. Note=Interaction with ATG14 promotes translocation to autophagosomes. Expressed in dendrites and cell bodies of cerebellar Purkinje cells (By similarity) {ECO:0000250|UniProtKB:O88597, ECO:0000269|PubMed:19050071} [Beclin-1-C 37 kDa]: Mitochondrion {ECO:0000250|UniProtKB:O88597}

**Tissue Location**

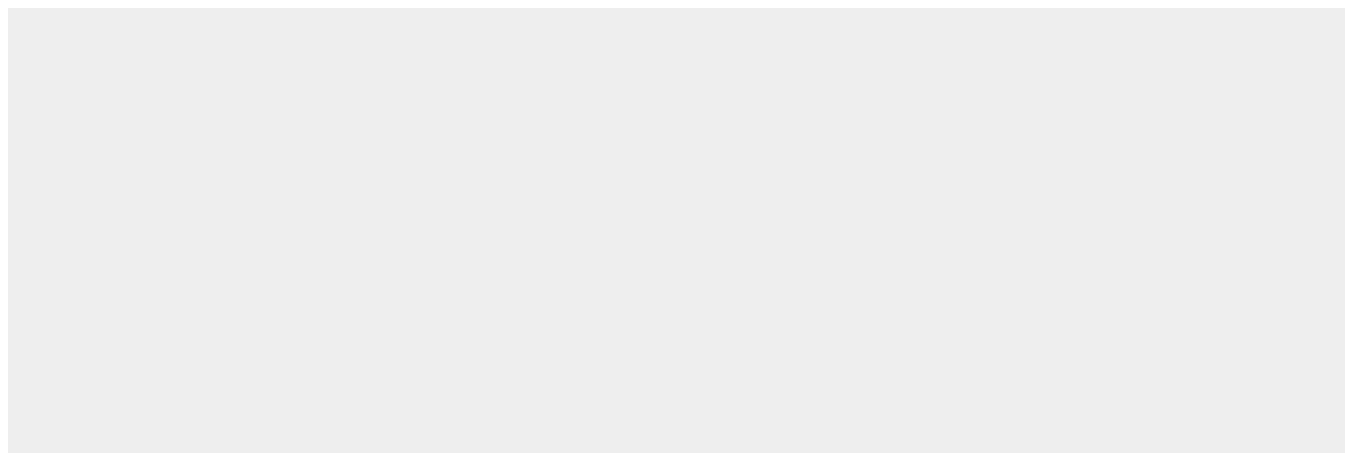
Ubiquitous.

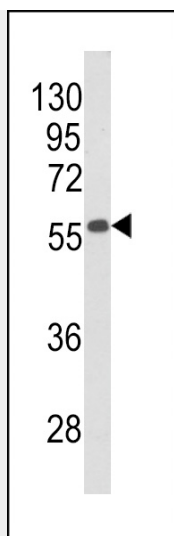
**Beclin1-BH3 Domain Antibody - Protocols**

Provided below are standard protocols that you may find useful for product applications.

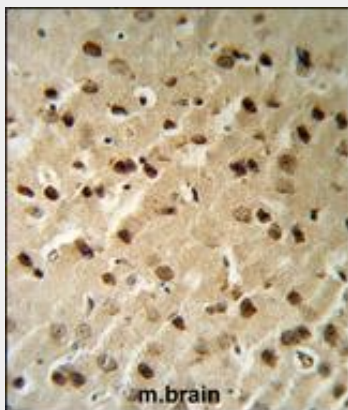
- [Western Blot](#)
- [Blocking Peptides](#)
- [Dot Blot](#)
- [Immunohistochemistry](#)
- [Immunofluorescence](#)
- [Immunoprecipitation](#)
- [Flow Cytometry](#)
- [Cell Culture](#)

**Beclin1-BH3 Domain Antibody - Images**

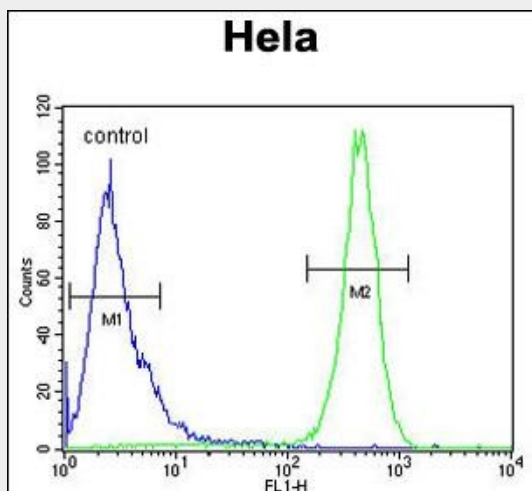




Western blot analysis of Beclin1-BH3 Domain Antibody (Cat. #AP8653a) in mouse stomach tissue lysates (35ug/lane). BECN1 (arrow) was detected using the purified Pab.



Beclin1-BH3 Domain Antibody (Cat. #AP8653a) IHC analysis in formalin fixed and paraffin embedded mouse brain tissue followed by peroxidase conjugation of the secondary antibody and DAB staining. This data demonstrates the use of the Beclin1-BH3 Domain Antibody for immunohistochemistry. Clinical relevance has not been evaluated.



Beclin1-BH3 Domain Antibody (Cat. #AP8653a) flow cytometric analysis of HeLa cells (right histogram) compared to a negative control cell (left histogram). FITC-conjugated goat-anti-rabbit secondary antibodies were used for the analysis.

**Beclin1-BH3 Domain Antibody - Background**

Beclin1-BH3 plays a central role in autophagy (By similarity). It may play a role in antiviral host defense. Protects against infection by a neurovirulent strain of Sindbis virus.

**Beclin1-BH3 Domain Antibody - References**

Won,K.Y., et.al., Hum. Pathol. 41 (1), 107-112 (2010) Oberstein,A., et.al., J. Biol. Chem. 282 (17), 13123-13132 (2007)