

TARSL2 Antibody (Center)
Affinity Purified Rabbit Polyclonal Antibody (Pab)
Catalog # AP8654c**Specification**

TARSL2 Antibody (Center) - Product Information

Application	WB,E
Primary Accession	A2RTX5
Reactivity	Human, Mouse
Host	Rabbit
Clonality	Polyclonal
Isotype	Rabbit IgG
Calculated MW	92646
Antigen Region	380-408

TARSL2 Antibody (Center) - Additional Information**Gene ID** 123283**Other Names**

Probable threonine--tRNA ligase 2, cytoplasmic, Threonyl-tRNA synthetase, ThrRS, Threonyl-tRNA synthetase-like protein 2, TARSL2

Target/Specificity

This TARSL2 antibody is generated from rabbits immunized with a KLH conjugated synthetic peptide between 380-408 amino acids from the Central region of human TARSL2.

Dilution

WB~~~1:1000

E~~~Use at an assay dependent concentration.

Format

Purified polyclonal antibody supplied in PBS with 0.09% (W/V) sodium azide. This antibody is purified through a protein A column, followed by peptide affinity purification.

Storage

Maintain refrigerated at 2-8°C for up to 2 weeks. For long term storage store at -20°C in small aliquots to prevent freeze-thaw cycles.

Precautions

TARSL2 Antibody (Center) is for research use only and not for use in diagnostic or therapeutic procedures.

TARSL2 Antibody (Center) - Protein Information**Name** TARSL2 ([HGNC:24728](#))**Synonyms** TARSL2

Function Catalyzes the attachment of threonine to tRNA(Thr) in a two- step reaction: threonine is first activated by ATP to form Thr-AMP and then transferred to the acceptor end of tRNA(Thr). Also edits incorrectly charged tRNA(Thr) via its editing domain, at the post- transfer stage.

Cellular Location

Cytoplasm {ECO:0000250|UniProtKB:Q8BLY2}. Nucleus {ECO:0000250|UniProtKB:Q8BLY2}.

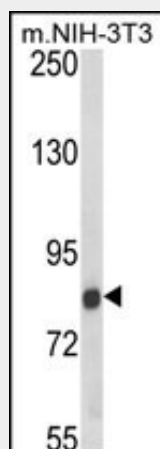
Note=Primarily cytoplasmic. Also detected at lower levels in the nucleus
{ECO:0000250|UniProtKB:Q8BLY2}

TARSL2 Antibody (Center) - Protocols

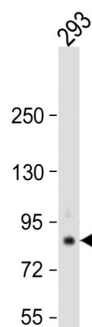
Provided below are standard protocols that you may find useful for product applications.

- [Western Blot](#)
- [Blocking Peptides](#)
- [Dot Blot](#)
- [Immunohistochemistry](#)
- [Immunofluorescence](#)
- [Immunoprecipitation](#)
- [Flow Cytometry](#)
- [Cell Culture](#)

TARSL2 Antibody (Center) - Images



Western blot analysis of TARSL2 Antibody (Center) (Cat. #AP8654c) in NIH-3T3 cell line lysates (35ug/lane). TARSL2 (arrow) was detected using the purified Pab.



Anti-TARSL2 Antibody (Center) at 1:1000 dilution + 293 whole cell lysate Lysates/proteins at 20 μ g per lane. Secondary Goat Anti-Rabbit IgG, (H+L), Peroxidase conjugated at 1/10000 dilution. Predicted band size : 93 kDa Blocking/Dilution buffer: 5% NFDM/TBST.