

**DSC1 Antibody (C-term)**  
**Affinity Purified Rabbit Polyclonal Antibody (Pab)**  
**Catalog # AP8666b**

**Specification**

---

**DSC1 Antibody (C-term) - Product Information**

Application	WB, IHC-P, FC,E
Primary Accession	<a href="#">Q08554</a>
Reactivity	Human
Host	Rabbit
Clonality	Polyclonal
Isotype	Rabbit IgG
Antigen Region	659-687

**DSC1 Antibody (C-term) - Additional Information**

**Gene ID** 1823

**Other Names**

Desmocollin-1, Cadherin family member 1, Desmosomal glycoprotein 2/3, DG2/DG3, DSC1, CDHF1

**Target/Specificity**

This DSC1 antibody is generated from rabbits immunized with a KLH conjugated synthetic peptide between 659-687 amino acids from the C-terminal region of human DSC1.

**Dilution**

WB~~1:1000  
IHC-P~~N/A  
FC~~1:10~50  
E~~Use at an assay dependent concentration.

**Format**

Purified polyclonal antibody supplied in PBS with 0.09% (W/V) sodium azide. This antibody is purified through a protein A column, followed by peptide affinity purification.

**Storage**

Maintain refrigerated at 2-8°C for up to 2 weeks. For long term storage store at -20°C in small aliquots to prevent freeze-thaw cycles.

**Precautions**

DSC1 Antibody (C-term) is for research use only and not for use in diagnostic or therapeutic procedures.

**DSC1 Antibody (C-term) - Protein Information**

**Name** DSC1

**Synonyms** CDHF1

**Function** A component of desmosome cell-cell junctions which are required for positive regulation of cellular adhesion (By similarity). Required for desmosome adhesion strength between the granular layers of the epidermis, as a result moderates epidermal proliferation and differentiation (By similarity). Is therefore required to maintain postnatal epidermal barrier function and normal hair follicle morphology into adulthood (By similarity).

**Cellular Location**

Cell membrane; Single-pass type I membrane protein. Cell junction, desmosome {ECO:0000250|UniProtKB:P55849}

**Tissue Location**

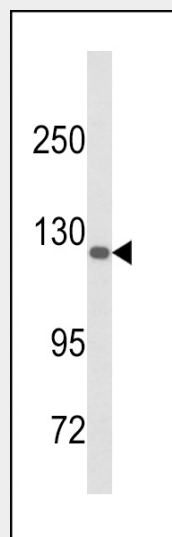
Strongly expressed in epidermis, less in lymph node and tongue.

**DSC1 Antibody (C-term) - Protocols**

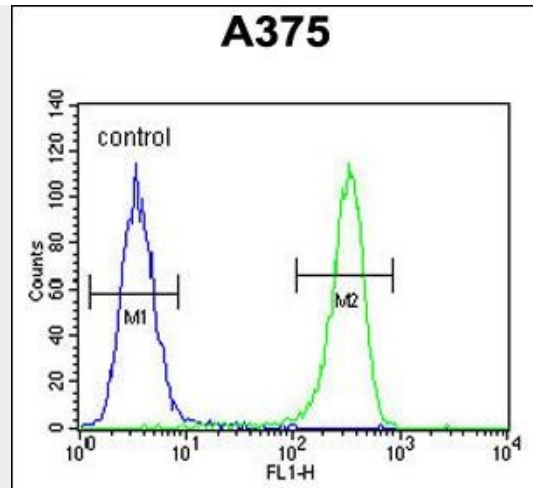
Provided below are standard protocols that you may find useful for product applications.

- [Western Blot](#)
- [Blocking Peptides](#)
- [Dot Blot](#)
- [Immunohistochemistry](#)
- [Immunofluorescence](#)
- [Immunoprecipitation](#)
- [Flow Cytometry](#)
- [Cell Culture](#)

**DSC1 Antibody (C-term) - Images**



Western blot analysis of DSC1 Antibody (C-term) (Cat. #AP8666b) in A375 cell line lysates (35ug/lane). DSC1 (arrow) was detected using the purified Pab.



DSC1 Antibody (C-term) (Cat. #AP8666b) flow cytometric analysis of A375 cells (right histogram) compared to a negative control cell (left histogram). FITC-conjugated goat-anti-rabbit secondary antibodies were used for the analysis.

#### **DSC1 Antibody (C-term) - Background**

DSC1 is a calcium-dependent glycoprotein that is a member of the desmocollin subfamily of the cadherin superfamily. These desmosomal family members, along with the desmogleins, are found primarily in epithelial cells where they constitute the adhesive proteins of the desmosome cell-cell junction and are required for cell adhesion and desmosome formation. The desmosomal family members are arranged in two clusters on chromosome 18, occupying less than 650 kb combined.

#### **DSC1 Antibody (C-term) - References**

Toulza, E., et al., *Genome Biol.* 8 (6), R107 (2007)  
Descargues, P., et al., *J. Invest. Dermatol.* 126 (7), 1622-1632 (2006)