

BANK1 Antibody (Center)
Affinity Purified Rabbit Polyclonal Antibody (Pab)
Catalog # AP8667c**Specification**

BANK1 Antibody (Center) - Product Information

Application	FC, WB,E
Primary Accession	Q8NDB2
Reactivity	Human
Host	Rabbit
Clonality	Polyclonal
Isotype	Rabbit IgG
Calculated MW	89282
Antigen Region	119-146

BANK1 Antibody (Center) - Additional Information**Gene ID** 55024**Other Names**

B-cell scaffold protein with ankyrin repeats, BANK1

Target/Specificity

This BANK1 antibody is generated from rabbits immunized with a KLH conjugated synthetic peptide between 119-146 amino acids from the Central region of human BANK1.

Dilution

FC~~1:10~50

WB~~1:1000

E~~Use at an assay dependent concentration.

Format

Purified polyclonal antibody supplied in PBS with 0.09% (W/V) sodium azide. This antibody is purified through a protein A column, followed by peptide affinity purification.

Storage

Maintain refrigerated at 2-8°C for up to 2 weeks. For long term storage store at -20°C in small aliquots to prevent freeze-thaw cycles.

Precautions

BANK1 Antibody (Center) is for research use only and not for use in diagnostic or therapeutic procedures.

BANK1 Antibody (Center) - Protein Information**Name** BANK1**Function** Involved in B-cell receptor (BCR)-induced Ca(2+) mobilization from intracellular stores.

Promotes Lyn-mediated phosphorylation of IP3 receptors 1 and 2.

Tissue Location

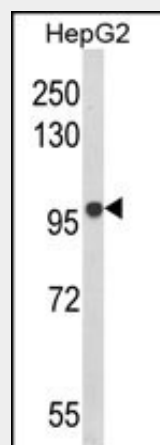
Expressed in B-cell but not T-cell or myeloid cell lines. Highest expression in CD19(+) B-cells, with very low expression in other cell populations.

BANK1 Antibody (Center) - Protocols

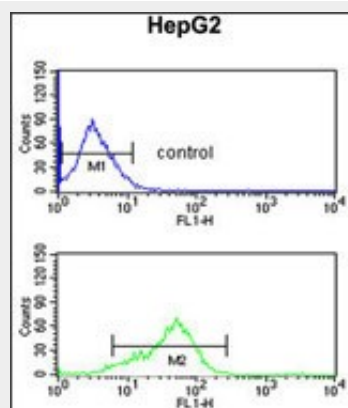
Provided below are standard protocols that you may find useful for product applications.

- [Western Blot](#)
- [Blocking Peptides](#)
- [Dot Blot](#)
- [Immunohistochemistry](#)
- [Immunofluorescence](#)
- [Immunoprecipitation](#)
- [Flow Cytometry](#)
- [Cell Culture](#)

BANK1 Antibody (Center) - Images



Western blot analysis of BANK1 Antibody (Center) (Cat. #AP8667c) in HepG2 cell line lysates (35ug/lane). BANK1 (arrow) was detected using the purified Pab.



BANK1 Antibody (Center) (Cat. #AP8667c) flow cytometric analysis of HepG2 cells (bottom histogram) compared to a negative control cell (top histogram). FITC-conjugated goat-anti-rabbit secondary antibodies were used for the analysis.

BANK1 Antibody (Center) - Background

BANK1 is a B-cell-specific scaffold protein and LYN (MIM 165120) tyrosine kinase substrate that promotes tyrosine phosphorylation of inositol 1,4,5-trisphosphate receptors.

BANK1 Antibody (Center) - References

Orozco,G., et.al., Arthritis Rheum. 60 (2), 372-379 (2009)

Guo,L., et.al., Genes Immun. 10 (5), 531-538 (2009)

BANK1 Antibody (Center) - Citations

- [Identification of a Novel Serological Marker in Seronegative Rheumatoid Arthritis Using the Peptide Library Approach](#)