

KIR3DS1 Antibody (C-term)
Affinity Purified Rabbit Polyclonal Antibody (Pab)
Catalog # AP8673b

Specification

KIR3DS1 Antibody (C-term) - Product Information

Application	WB, FC,E
Primary Accession	Q14943
Reactivity	Human
Host	Rabbit
Clonality	Polyclonal
Isotype	Rabbit IgG
Antigen Region	361-387

KIR3DS1 Antibody (C-term) - Additional Information

Gene ID 3813

Other Names

Killer cell immunoglobulin-like receptor 3DS1, MHC class I NK cell receptor, Natural killer-associated transcript 10, NKAT-10, KIR3DS1, NKAT10

Target/Specificity

This KIR3DS1 antibody is generated from rabbits immunized with a KLH conjugated synthetic peptide between 361-387 amino acids from the C-terminal region of human KIR3DS1.

Dilution

WB~~1:1000

FC~~1:10~50

Format

Purified polyclonal antibody supplied in PBS with 0.09% (W/V) sodium azide. This antibody is purified through a protein A column, followed by peptide affinity purification.

Storage

Maintain refrigerated at 2-8°C for up to 2 weeks. For long term storage store at -20°C in small aliquots to prevent freeze-thaw cycles.

Precautions

KIR3DS1 Antibody (C-term) is for research use only and not for use in diagnostic or therapeutic procedures.

KIR3DS1 Antibody (C-term) - Protein Information

Name KIR3DS1 ([HGNC:6340](#))

Synonyms NKAT10

Function Receptor on natural killer (NK) cells for MHC class I molecules. Upon interaction with peptide-free HLA-F open conformer, triggers NK cell degranulation and anti-viral cytokine production.

Cellular Location

Cell membrane; Single-pass type I membrane protein

Tissue Location

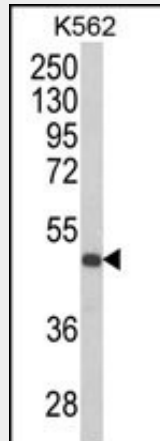
Expressed in NK and T-cell lines but not in B- lymphoblastoid cell lines or in a colon carcinoma cell line

KIR3DS1 Antibody (C-term) - Protocols

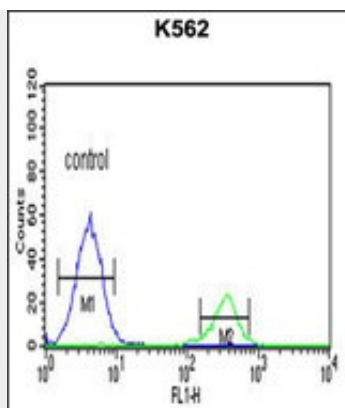
Provided below are standard protocols that you may find useful for product applications.

- [Western Blot](#)
- [Blocking Peptides](#)
- [Dot Blot](#)
- [Immunohistochemistry](#)
- [Immunofluorescence](#)
- [Immunoprecipitation](#)
- [Flow Cytometry](#)
- [Cell Culture](#)

KIR3DS1 Antibody (C-term) - Images



Western blot analysis of KIR3DS1 Antibody (C-term) (Cat. #AP8673b) in K562 cell line lysates (35ug/lane). KIR3DS1 (arrow) was detected using the purified Pab.



KIR3DS1 Antibody (C-term) (Cat. #AP8673b) flow cytometric analysis of K562 cells (right histogram) compared to a negative control cell (left histogram). FITC-conjugated goat-anti-rabbit secondary antibodies were used for the analysis.

KIR3DS1 Antibody (C-term) - Background

KIR3DS1 is the receptor on natural killer (NK) cells for HLA-C alleles. It does not inhibit the activity of NK cells.