

**NIP7 Antibody (C-term)**  
**Affinity Purified Rabbit Polyclonal Antibody (Pab)**  
**Catalog # AP8691b**

**Specification**

---

**NIP7 Antibody (C-term) - Product Information**

Application	WB, FC,E
Primary Accession	<a href="#">Q9Y221</a>
Other Accession	<a href="#">Q56P27</a> , <a href="#">Q9CXK8</a>
Reactivity	Human
Predicted	Mouse, Pig
Host	Rabbit
Clonality	Polyclonal
Isotype	Rabbit IgG
Calculated MW	20463
Antigen Region	150-177

**NIP7 Antibody (C-term) - Additional Information**

**Gene ID** 51388

**Other Names**

60S ribosome subunit biogenesis protein NIP7 homolog, KD93, NIP7

**Target/Specificity**

This NIP7 antibody is generated from rabbits immunized with a KLH conjugated synthetic peptide between 150-177 amino acids from the C-terminal region of human NIP7.

**Dilution**

WB~~1:1000

FC~~1:10~50

E~~Use at an assay dependent concentration.

**Format**

Purified polyclonal antibody supplied in PBS with 0.09% (W/V) sodium azide. This antibody is purified through a protein A column, followed by peptide affinity purification.

**Storage**

Maintain refrigerated at 2-8°C for up to 2 weeks. For long term storage store at -20°C in small aliquots to prevent freeze-thaw cycles.

**Precautions**

NIP7 Antibody (C-term) is for research use only and not for use in diagnostic or therapeutic procedures.

**NIP7 Antibody (C-term) - Protein Information**

**Name** NIP7

**Function** Required for proper 34S pre-rRNA processing and 60S ribosome subunit assembly.

**Cellular Location**

Nucleus, nucleolus

**Tissue Location**

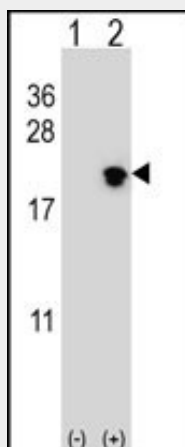
Expressed in hematopoietic stem/progenitor cells.

**NIP7 Antibody (C-term) - Protocols**

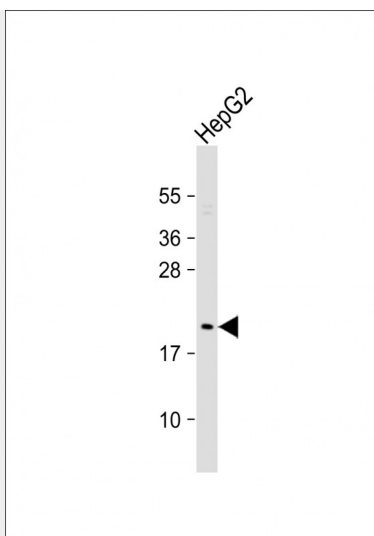
Provided below are standard protocols that you may find useful for product applications.

- [Western Blot](#)
- [Blocking Peptides](#)
- [Dot Blot](#)
- [Immunohistochemistry](#)
- [Immunofluorescence](#)
- [Immunoprecipitation](#)
- [Flow Cytometry](#)
- [Cell Culture](#)

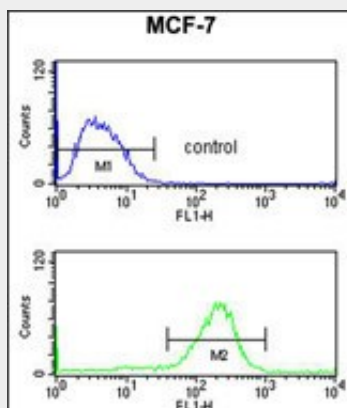
**NIP7 Antibody (C-term) - Images**



Western blot analysis of NIP7 (arrow) using rabbit polyclonal NIP7 Antibody (C-term) (Cat. #AP8691b). 293 cell lysates (2 ug/lane) either nontransfected (Lane 1) or transiently transfected (Lane 2) with the NIP7 gene.



Anti-NIP7 Antibody (C-term) at 1:1000 dilution + HepG2 whole cell lysate Lysates/proteins at 20 µg per lane. Secondary Goat Anti-Rabbit IgG, (H+L), Peroxidase conjugated at 1/10000 dilution. Predicted band size : 20 kDa Blocking/Dilution buffer: 5% NFDM/TBST.



NIP7 Antibody (C-term) (Cat. #AP8691b) flow cytometry analysis of MCF-7 cells (bottom histogram) compared to a negative control cell (top histogram). FITC-conjugated goat-anti-rabbit secondary antibodies were used for the analysis.

#### **NIP7 Antibody (C-term) - Background**

Required for proper 27S pre-rRNA processing and 60S ribosome subunit assembly.

#### **NIP7 Antibody (C-term) - References**

Liu, J.F., et.al., J. Struct. Biol. 148 (3), 370-374 (2004)  
Chagnon, P., et.al., Am. J. Hum. Genet. 71 (6), 1443-1449 (2002)