

AGPAT4 Antibody (Center)
Affinity Purified Rabbit Polyclonal Antibody (Pab)
Catalog # AP8705c

Specification

AGPAT4 Antibody (Center) - Product Information

Application	WB, FC,E
Primary Accession	Q9NRZ5
Other Accession	Q4R581
Reactivity	Human
Predicted	Monkey
Host	Rabbit
Clonality	Polyclonal
Isotype	Rabbit IgG
Calculated MW	44021
Antigen Region	176-202

AGPAT4 Antibody (Center) - Additional Information

Gene ID 56895

Other Names

1-acyl-sn-glycerol-3-phosphate acyltransferase delta, 1-acylglycerol-3-phosphate O-acyltransferase 4, 1-AGP acyltransferase 4, 1-AGPAT 4, Lysophosphatidic acid acyltransferase delta, LPAAT-delta, AGPAT4

Target/Specificity

This AGPAT4 antibody is generated from rabbits immunized with a KLH conjugated synthetic peptide between 176-202 amino acids from the Central region of human AGPAT4.

Dilution

WB~~1:1000
FC~~1:10~50

Format

Purified polyclonal antibody supplied in PBS with 0.09% (W/V) sodium azide. This antibody is purified through a protein A column, followed by peptide affinity purification.

Storage

Maintain refrigerated at 2-8°C for up to 2 weeks. For long term storage store at -20°C in small aliquots to prevent freeze-thaw cycles.

Precautions

AGPAT4 Antibody (Center) is for research use only and not for use in diagnostic or therapeutic procedures.

AGPAT4 Antibody (Center) - Protein Information

Name AGPAT4

Function Converts 1-acyl-sn-glycerol-3-phosphate (lysophosphatidic acid or LPA) into 1,2-diacyl-sn-glycerol-3-phosphate (phosphatidic acid or PA) by incorporating an acyl moiety at the sn-2 position of the glycerol backbone (By similarity). Exhibits high acyl-CoA specificity for polyunsaturated fatty acyl-CoA, especially docosahexaenoyl-CoA (22:6-CoA, DHA-CoA) (By similarity).

Cellular Location

Endoplasmic reticulum membrane {ECO:0000250|UniProtKB:Q8K4X7}; Multi-pass membrane protein

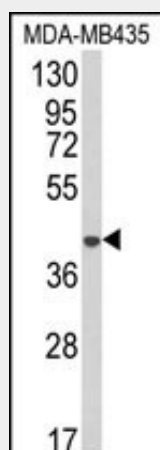
Tissue Location

Widely expressed with highest levels in skeletal muscle, followed by heart, liver, prostate and thymus

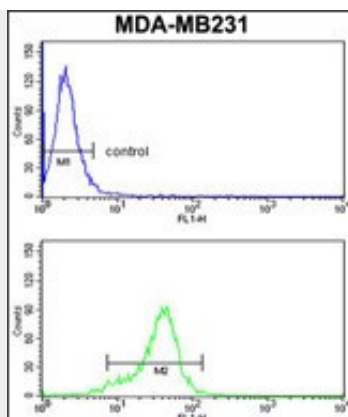
AGPAT4 Antibody (Center) - Protocols

Provided below are standard protocols that you may find useful for product applications.

- [Western Blot](#)
- [Blocking Peptides](#)
- [Dot Blot](#)
- [Immunohistochemistry](#)
- [Immunofluorescence](#)
- [Immunoprecipitation](#)
- [Flow Cytometry](#)
- [Cell Culture](#)

AGPAT4 Antibody (Center) - Images

Western blot analysis of AGPAT4 Antibody (Center) (Cat. #AP8705c) in MDA-MB435 cell line lysates (35ug/lane). AGPAT4 (arrow) was detected using the purified Pab.



AGPAT4 Antibody (Center) (Cat.#AP8705c) flow cytometry analysis of MDA-MB231 cells (bottom histogram) compared to a negative control cell (top histogram). FITC-conjugated goat-anti-rabbit secondary antibodies were used for the analysis.

AGPAT4 Antibody (Center) - Background

AGPAT4 converts lysophosphatidic acid (LPA) into phosphatidic acid by incorporating an acyl moiety at the sn-2 position of the glycerol backbone.

AGPAT4 Antibody (Center) - References

Leung,D.W. et.al., Front. Biosci. 6, D944-D953 (2001)
Clark,H.F., et.al., Genome Res. 13 (10), 2265-2270 (2003)