

**ACY3 Antibody (Center)**  
**Affinity Purified Rabbit Polyclonal Antibody (Pab)**  
**Catalog # AP8715c****Specification**

---

**ACY3 Antibody (Center) - Product Information**

Application	FC, WB,E
Primary Accession	<a href="#">O96HD9</a>
Reactivity	Human, Mouse
Host	Rabbit
Clonality	Polyclonal
Isotype	Rabbit IgG
Calculated MW	35241
Antigen Region	66-95

**ACY3 Antibody (Center) - Additional Information****Gene ID** 91703**Other Names**

N-acyl-aromatic-L-amino acid amidohydrolase (carboxylate-forming), Acylase III, Aminoacylase-3, ACY-3, Aspartoacylase-2, Hepatitis C virus core-binding protein 1, HCBP1, HCV core-binding protein 1, ACY3, ASPA2

**Target/Specificity**

This ACY3 antibody is generated from rabbits immunized with a KLH conjugated synthetic peptide between 66-95 amino acids from the Central region of human ACY3.

**Dilution**

FC~~1:10~50

WB~~1:1000

E~~Use at an assay dependent concentration.

**Format**

Purified polyclonal antibody supplied in PBS with 0.09% (W/V) sodium azide. This antibody is purified through a protein A column, followed by peptide affinity purification.

**Storage**

Maintain refrigerated at 2-8°C for up to 2 weeks. For long term storage store at -20°C in small aliquots to prevent freeze-thaw cycles.

**Precautions**

ACY3 Antibody (Center) is for research use only and not for use in diagnostic or therapeutic procedures.

**ACY3 Antibody (Center) - Protein Information****Name** ACY3

**Synonyms** ASPA2

**Function** Plays an important role in deacetylating mercapturic acids in kidney proximal tubules. Also acts on N-acetyl-aromatic amino acids (By similarity).

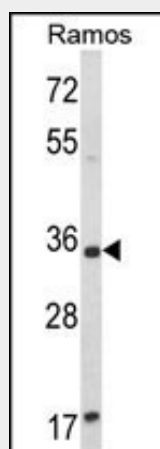
**Cellular Location**

Apical cell membrane; Peripheral membrane protein. Cytoplasm Note=Predominantly localized in the apical membrane of cells in the S1 segment. In the proximal straight tubules (S2 and S3 segments) is expressed diffusely throughout the cytoplasm

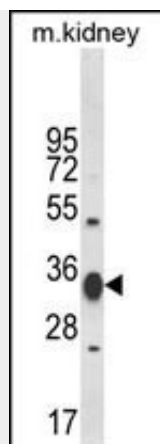
**ACY3 Antibody (Center) - Protocols**

Provided below are standard protocols that you may find useful for product applications.

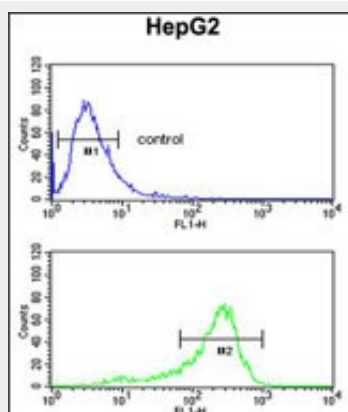
- [Western Blot](#)
- [Blocking Peptides](#)
- [Dot Blot](#)
- [Immunohistochemistry](#)
- [Immunofluorescence](#)
- [Immunoprecipitation](#)
- [Flow Cytometry](#)
- [Cell Culture](#)

**ACY3 Antibody (Center) - Images**

Western blot analysis of ACY3 Antibody (Center) (Cat. #AP8715c) in Ramos cell line lysates (35ug/lane). ACY3 (arrow) was detected using the purified Pab.



Western blot analysis of ACY3 Antibody (Center) (Cat. #AP8715c) in mouse kidney tissue lysates (35ug/lane). ACY3 (arrow) was detected using the purified Pab.



ACY3 Antibody (Center) (Cat. #AP8715c) flow cytometric analysis of HepG2 cells (bottom histogram) compared to a negative control cell (top histogram). FITC-conjugated goat-anti-rabbit secondary antibodies were used for the analysis.

### ACY3 Antibody (Center) - Background

ACY3 belongs to the aspA/astE family. Aspartoacylase subfamily. Catalytic activity:  
 $\text{N-acyl-L-aspartate} + \text{H}_2\text{O} = \text{a carboxylate} + \text{L-aspartate}$

### ACY3 Antibody (Center) - References

Chen, Y.R., et.al., J. Gastroenterol. Hepatol. 24 (7), 1300-1304 (2009)  
Pushkin, A., et.al., Am. J. Physiol., Cell Physiol. 286 (4), C848-C856 (2004)