

**SKIV2L2 Antibody (Center)**  
**Affinity Purified Rabbit Polyclonal Antibody (Pab)**  
**Catalog # AP8739c****Specification**

---

**SKIV2L2 Antibody (Center) - Product Information**

Application	FC, IHC-P, WB,E
Primary Accession	<a href="#">P42285</a>
Other Accession	<a href="#">Q9CZU3</a>
Reactivity	Human
Predicted	Mouse
Host	Rabbit
Clonality	Polyclonal
Isotype	Rabbit IgG
Calculated MW	117805
Antigen Region	237-263

**SKIV2L2 Antibody (Center) - Additional Information****Gene ID** 23517**Other Names**

Superkiller viralicidic activity 2-like 2, ATP-dependent RNA helicase SKIV2L2, TRAMP-like complex helicase, SKIV2L2, KIAA0052, Mtr4

**Target/Specificity**

This SKIV2L2 antibody is generated from rabbits immunized with a KLH conjugated synthetic peptide between 237-263 amino acids from the Central region of human SKIV2L2.

**Dilution**

FC~~1:10~50

IHC-P~~1:50~100

WB~~1:1000

E~~Use at an assay dependent concentration.

**Format**

Purified polyclonal antibody supplied in PBS with 0.09% (W/V) sodium azide. This antibody is purified through a protein A column, followed by peptide affinity purification.

**Storage**

Maintain refrigerated at 2-8°C for up to 2 weeks. For long term storage store at -20°C in small aliquots to prevent freeze-thaw cycles.

**Precautions**

SKIV2L2 Antibody (Center) is for research use only and not for use in diagnostic or therapeutic procedures.

**SKIV2L2 Antibody (Center) - Protein Information**

**Name** MTREX ([HGNC:18734](#))

**Function** Catalyzes the ATP-dependent unwinding of RNA duplexes with a single-stranded 3' RNA extension (PubMed:[27871484](#), PubMed:[29844170](#), PubMed:[29906447](#)). Central subunit of many protein complexes, namely TRAMP-like, nuclear exosome targeting (NEXT) and poly(A) tail exosome targeting (PAXT) (PubMed:[21855801](#), PubMed:[27871484](#), PubMed:[29844170](#)). NEXT functions as an RNA exosome cofactor that directs a subset of non-coding short-lived RNAs for exosomal degradation. NEXT is involved in surveillance and turnover of aberrant transcripts and non-coding RNAs (PubMed:[27871484](#), PubMed:[29844170](#)). PAXT directs a subset of long and polyadenylated poly(A) RNAs for exosomal degradation. The RNA exosome is fundamental for the degradation of RNA in eukaryotic nuclei. Substrate targeting is facilitated by its cofactor ZCCHC8, which links to RNA-binding protein adapters (PubMed:[27871484](#)). Associated with the RNA exosome complex and involved in the 3'-processing of the 7S pre-rRNA to the mature 5.8S rRNA (PubMed:[17412707](#), PubMed:[29107693](#)). May be involved in pre-mRNA splicing. In the context of NEXT complex can also in vitro unwind DNA:RNA heteroduplexes with a 3' poly (A) RNA tracking strand (PubMed:[29844170](#)). Can promote unwinding and degradation of structured RNA substrates when associated with the nuclear exosome and its cofactors. Can displace a DNA strand while translocating on RNA to ultimately degrade the RNA within a DNA/RNA heteroduplex (PubMed:[29906447](#)). Plays a role in DNA damage response (PubMed:[29902117](#)).

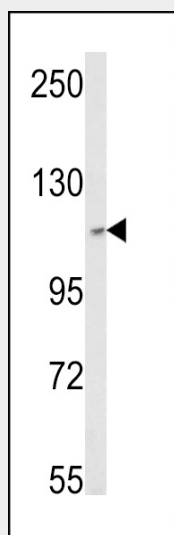
**Cellular Location**

Nucleus, nucleoplasm. Nucleus, nucleolus. Nucleus Nucleus speckle

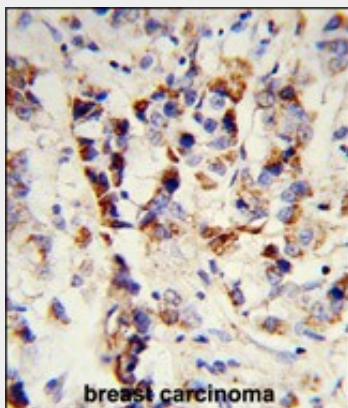
**SKIV2L2 Antibody (Center) - Protocols**

Provided below are standard protocols that you may find useful for product applications.

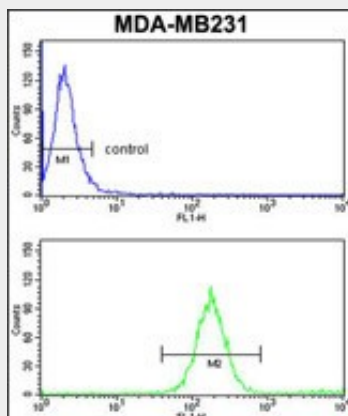
- [Western Blot](#)
- [Blocking Peptides](#)
- [Dot Blot](#)
- [Immunohistochemistry](#)
- [Immunofluorescence](#)
- [Immunoprecipitation](#)
- [Flow Cytometry](#)
- [Cell Culture](#)

**SKIV2L2 Antibody (Center) - Images**

Western blot analysis of SKIV2L2 Antibody (Center) (Cat. #AP8739c) in MCF-7 cell line lysates (35ug/lane). SKIV2L2 (arrow) was detected using the purified Pab.



Formalin-fixed and paraffin-embedded human breast carcinoma reacted with SKIV2L2 Antibody (Center), which was peroxidase-conjugated to the secondary antibody, followed by DAB staining. This data demonstrates the use of this antibody for immunohistochemistry; clinical relevance has not been evaluated.



SKIV2L2 Antibody (Center) (Cat.#AP8739c) flow cytometry analysis of MDA-MB231 cells (bottom histogram) compared to a negative control cell (top histogram). FITC-conjugated goat-anti-rabbit secondary antibodies were used for the analysis.

### **SKIV2L2 Antibody (Center) - Background**

SKIV2L2 may be involved in pre-mRNA splicing.

### **SKIV2L2 Antibody (Center) - References**

Choudhary C.,et.al., Science 325:834-840(2009).