

LGALS2 Antibody (Center)
Affinity Purified Rabbit Polyclonal Antibody (Pab)
Catalog # AP8741c**Specification**

LGALS2 Antibody (Center) - Product Information

Application	FC, IHC-P, WB,E
Primary Accession	P05162
Reactivity	Human, Mouse
Host	Rabbit
Clonality	Polyclonal
Isotype	Rabbit IgG
Calculated MW	14644
Antigen Region	85-111

LGALS2 Antibody (Center) - Additional Information**Gene ID** 3957**Other Names**

Galectin-2, Gal-2, Beta-galactoside-binding lectin L-14-II, HL14, Lactose-binding lectin 2, S-Lac lectin 2, LGALS2

Target/Specificity

This LGALS2 antibody is generated from rabbits immunized with a KLH conjugated synthetic peptide between 85-111 amino acids from the Central region of human LGALS2.

Dilution

FC~~1:10~50

IHC-P~~1:50~100

WB~~1:1000

E~~Use at an assay dependent concentration.

Format

Purified polyclonal antibody supplied in PBS with 0.09% (W/V) sodium azide. This antibody is purified through a protein A column, followed by peptide affinity purification.

Storage

Maintain refrigerated at 2-8°C for up to 2 weeks. For long term storage store at -20°C in small aliquots to prevent freeze-thaw cycles.

Precautions

LGALS2 Antibody (Center) is for research use only and not for use in diagnostic or therapeutic procedures.

LGALS2 Antibody (Center) - Protein Information**Name** LGALS2

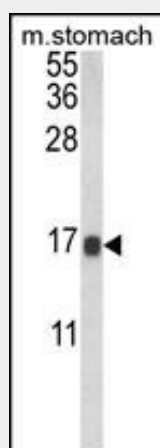
Function This protein binds beta-galactoside. Its physiological function is not yet known.

LGALS2 Antibody (Center) - Protocols

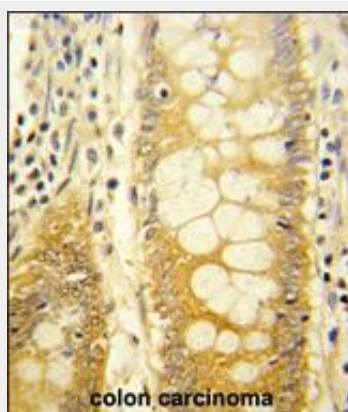
Provided below are standard protocols that you may find useful for product applications.

- [Western Blot](#)
- [Blocking Peptides](#)
- [Dot Blot](#)
- [Immunohistochemistry](#)
- [Immunofluorescence](#)
- [Immunoprecipitation](#)
- [Flow Cytometry](#)
- [Cell Culture](#)

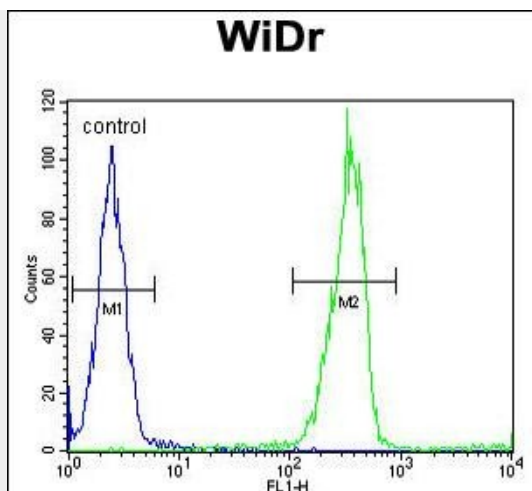
LGALS2 Antibody (Center) - Images



Western blot analysis of LGALS2 Antibody (Center) (Cat. #AP8741c) in mouse stomach tissue lysates (35ug/lane). LGALS2 (arrow) was detected using the purified Pab.



Formalin-fixed and paraffin-embedded human colon carcinoma reacted with LGALS2 Antibody (Center), which was peroxidase-conjugated to the secondary antibody, followed by DAB staining. This data demonstrates the use of this antibody for immunohistochemistry; clinical relevance has not been evaluated.



LGALS2 Antibody (Center) (Cat. #AP8741c) flow cytometric analysis of WiDr cells (right histogram) compared to a negative control cell (left histogram). FITC-conjugated goat-anti-rabbit secondary antibodies were used for the analysis.

LGALS2 Antibody (Center) - Background

This protein binds beta-galactoside. Its physiological function is not yet known.

LGALS2 Antibody (Center) - References

Gitt M.A., et.al., Proc. Natl. Acad. Sci. U.S.A. 83:7603-7607(1986).