

CCDC3 Antibody (C-term)
Affinity Purified Rabbit Polyclonal Antibody (Pab)
Catalog # AP8744b**Specification**

CCDC3 Antibody (C-term) - Product Information

Application	WB, IHC-P, FC,E
Primary Accession	Q9BQI4
Other Accession	Q9D6Y1
Reactivity	Human, Mouse
Host	Rabbit
Clonality	Polyclonal
Isotype	Rabbit IgG
Antigen Region	195-222

CCDC3 Antibody (C-term) - Additional Information**Gene ID** 83643**Other Names**

Coiled-coil domain-containing protein 3, Fat/vessel-derived secretory protein, Favine, CCDC3

Target/Specificity

This CCDC3 antibody is generated from rabbits immunized with a KLH conjugated synthetic peptide between 195-222 amino acids from the C-terminal region of human CCDC3.

DilutionWB~~1:1000
IHC-P~~1:50~100
FC~~1:10~50**Format**

Purified polyclonal antibody supplied in PBS with 0.09% (W/V) sodium azide. This antibody is purified through a protein A column, followed by peptide affinity purification.

Storage

Maintain refrigerated at 2-8°C for up to 2 weeks. For long term storage store at -20°C in small aliquots to prevent freeze-thaw cycles.

Precautions

CCDC3 Antibody (C-term) is for research use only and not for use in diagnostic or therapeutic procedures.

CCDC3 Antibody (C-term) - Protein Information**Name** CCDC3**Function** Negatively regulates TNF-alpha-induced pro-inflammatory response in endothelial cells

(ECs) via inhibition of TNF-alpha-induced NF-kappaB activation in ECs (PubMed:[25193116](#)). Positively regulates lipid accumulation in adipose cells (By similarity).

Cellular Location

Secreted {ECO:0000250|UniProtKB:Q9D6Y1}.

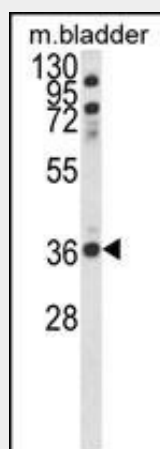
Tissue Location

Expressed in umbilical vein endothelial cells (HUVEC), and at lower levels in aortic smooth muscle cells (HASMC)

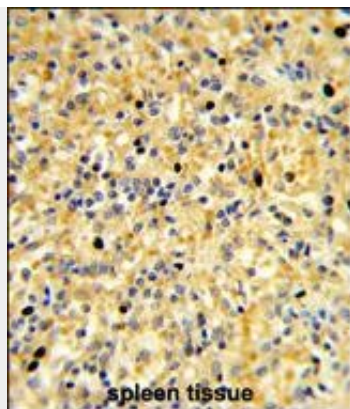
CCDC3 Antibody (C-term) - Protocols

Provided below are standard protocols that you may find useful for product applications.

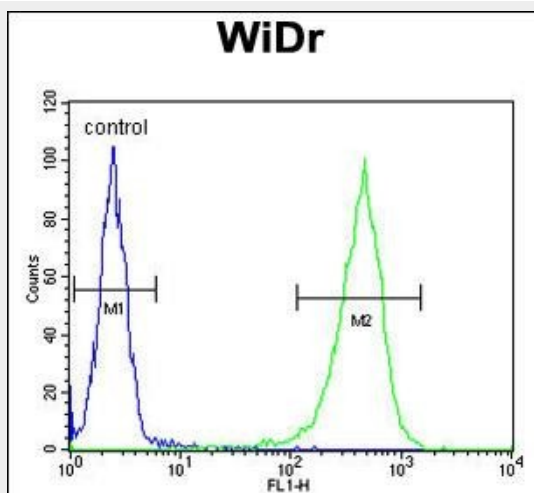
- [Western Blot](#)
- [Blocking Peptides](#)
- [Dot Blot](#)
- [Immunohistochemistry](#)
- [Immunofluorescence](#)
- [Immunoprecipitation](#)
- [Flow Cytometry](#)
- [Cell Culture](#)

CCDC3 Antibody (C-term) - Images

Western blot analysis of CCDC3 Antibody (C-term) (Cat. #AP8744b) in mouse bladder tissue lysates (35ug/lane). CCDC3 (arrow) was detected using the purified Pab.



Formalin-fixed and paraffin-embedded human spleen reacted with CCDC3 Antibody (C-term), which was peroxidase-conjugated to the secondary antibody, followed by DAB staining. This data demonstrates the use of this antibody for immunohistochemistry; clinical relevance has not been evaluated.



CCDC3 Antibody (C-term) (Cat. #AP8744b) flow cytometric analysis of WiDr cells (right histogram) compared to a negative control cell (left histogram).FITC-conjugated goat-anti-rabbit secondary antibodies were used for the analysis.

CCDC3 Antibody (C-term) - References

Mural,R.J., et.al., Submitted (05-JUL-2005) Celera Genomics, 45 W. Gude Dr., Rockville,MD 20850, USA