

**HSPA4L Antibody (C-term)**  
**Affinity Purified Rabbit Polyclonal Antibody (Pab)**  
**Catalog # AP8747b****Specification**

---

**HSPA4L Antibody (C-term) - Product Information**

Application	FC, IHC-P, WB,E
Primary Accession	<a href="#">O95757</a>
Reactivity	Human
Host	Rabbit
Clonality	Polyclonal
Isotype	Rabbit IgG
Calculated MW	94512
Antigen Region	776-803

**HSPA4L Antibody (C-term) - Additional Information****Gene ID** 22824**Other Names**

Heat shock 70 kDa protein 4L, Heat shock 70-related protein APG-1, Osmotic stress protein 94, HSPA4L, APG1, OSP94

**Target/Specificity**

This HSPA4L antibody is generated from rabbits immunized with a KLH conjugated synthetic peptide between 776-803 amino acids from the C-terminal region of human HSPA4L.

**Dilution**

FC~~1:10~50

IHC-P~~1:50~100

WB~~1:1000

E~~Use at an assay dependent concentration.

**Format**

Purified polyclonal antibody supplied in PBS with 0.09% (W/V) sodium azide. This antibody is purified through a protein A column, followed by peptide affinity purification.

**Storage**

Maintain refrigerated at 2-8°C for up to 2 weeks. For long term storage store at -20°C in small aliquots to prevent freeze-thaw cycles.

**Precautions**

HSPA4L Antibody (C-term) is for research use only and not for use in diagnostic or therapeutic procedures.

**HSPA4L Antibody (C-term) - Protein Information****Name** HSPA4L

**Synonyms** APG1, HSPH3, OSP94

**Function** Possesses chaperone activity in vitro where it inhibits aggregation of citrate synthase.

**Cellular Location**

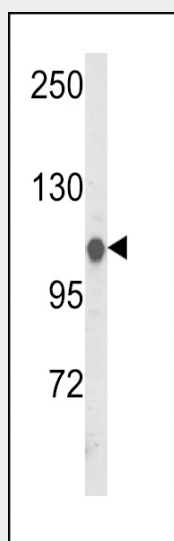
Cytoplasm. Nucleus. Note=May translocate to the nucleus after heat shock.

**HSPA4L Antibody (C-term) - Protocols**

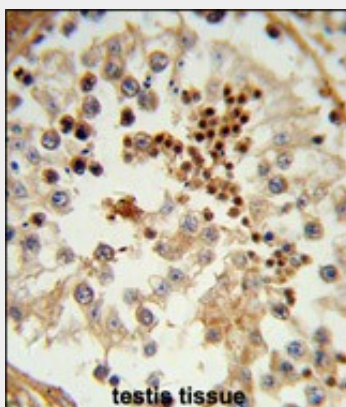
Provided below are standard protocols that you may find useful for product applications.

- [Western Blot](#)
- [Blocking Peptides](#)
- [Dot Blot](#)
- [Immunohistochemistry](#)
- [Immunofluorescence](#)
- [Immunoprecipitation](#)
- [Flow Cytometry](#)
- [Cell Culture](#)

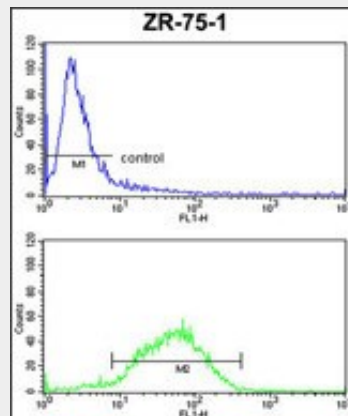
**HSPA4L Antibody (C-term) - Images**



Western blot analysis of HSPA4L Antibody (C-term) (Cat. #AP8747b) in HeLa cell line lysates (35ug/lane). HSPA4L (arrow) was detected using the purified Pab.



Formalin-fixed and paraffin-embedded human testis tissue reacted with HSPA4L Antibody (C-term), which was peroxidase-conjugated to the secondary antibody, followed by DAB staining. This data demonstrates the use of this antibody for immunohistochemistry; clinical relevance has not been evaluated.



HSPA4L Antibody (C-term) (Cat.#AP8747b) FC analysis of ZR-75-1 cells (bottom histogram) compared to a negative control cell (top histogram). FITC-conjugated goat-anti-rabbit secondary antibodies were used for the analysis.

#### **HSPA4L Antibody (C-term) - Background**

Possesses chaperone activity in vitro where it inhibits aggregation of citrate synthase.

#### **HSPA4L Antibody (C-term) - References**

Nonoguchi,K., et.al., Int. J. Urol. 8 (6), 308-314 (2001)