

IL10RA Antibody (Center)
Affinity Purified Rabbit Polyclonal Antibody (Pab)
Catalog # AP8768C**Specification**

IL10RA Antibody (Center) - Product Information

Application	IF, FC, WB,E
Primary Accession	Q13651
Reactivity	Human
Host	Rabbit
Clonality	Polyclonal
Isotype	Rabbit IgG
Antigen Region	147-175

IL10RA Antibody (Center) - Additional Information**Gene ID** 3587**Other Names**

Interleukin-10 receptor subunit alpha, IL-10 receptor subunit alpha, IL-10R subunit alpha, IL-10RA, CDw210a, Interleukin-10 receptor subunit 1, IL-10R subunit 1, IL-10R1, CD210, IL10RA, IL10R

Target/Specificity

This IL10RA antibody is generated from rabbits immunized with a KLH conjugated synthetic peptide between 147-175 amino acids from the Central region of human IL10RA.

Dilution

IF~~1:10~50
FC~~1:10~50
WB~~1:1000
E~~Use at an assay dependent concentration.

Format

Purified polyclonal antibody supplied in PBS with 0.09% (W/V) sodium azide. This antibody is purified through a protein A column, followed by peptide affinity purification.

Storage

Maintain refrigerated at 2-8°C for up to 2 weeks. For long term storage store at -20°C in small aliquots to prevent freeze-thaw cycles.

Precautions

IL10RA Antibody (Center) is for research use only and not for use in diagnostic or therapeutic procedures.

IL10RA Antibody (Center) - Protein Information**Name** IL10RA

Synonyms IL10R

Function Cell surface receptor for the cytokine IL10 that participates in IL10-mediated anti-inflammatory functions, limiting excessive tissue disruption caused by inflammation. Upon binding to IL10, induces a conformational change in IL10RB, allowing IL10RB to bind IL10 as well (PubMed:[16982608](#)). In turn, the heterotetrameric assembly complex, composed of two subunits of IL10RA and IL10RB, activates the kinases JAK1 and TYK2 that are constitutively associated with IL10RA and IL10RB respectively (PubMed:[12133952](#)). These kinases then phosphorylate specific tyrosine residues in the intracellular domain in IL10RA leading to the recruitment and subsequent phosphorylation of STAT3. Once phosphorylated, STAT3 homodimerizes, translocates to the nucleus and activates the expression of anti-inflammatory genes. In addition, IL10RA-mediated activation of STAT3 inhibits starvation-induced autophagy (PubMed:[26962683](#)).

Cellular Location

Cell membrane; Single-pass type I membrane protein Cytoplasm

Tissue Location

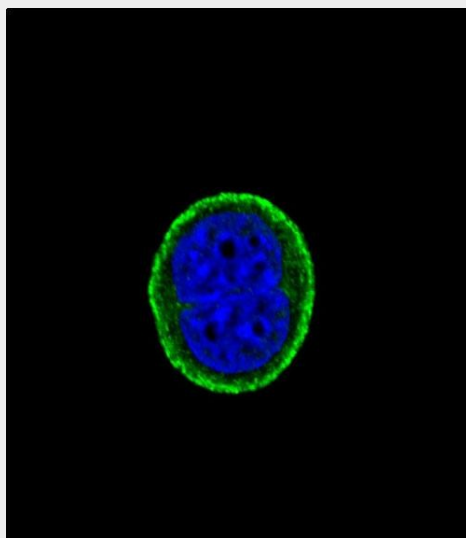
Primarily expressed in hematopoietic cells including B-cells, T-cells, NK cells, monocytes and macrophages. Not expressed in non-hematopoietic cells such as fibroblasts or endothelial cells

IL10RA Antibody (Center) - Protocols

Provided below are standard protocols that you may find useful for product applications.

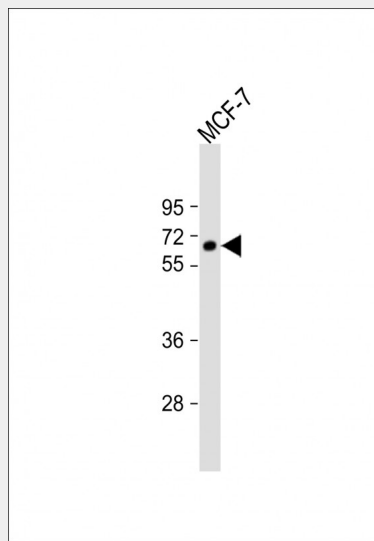
- [Western Blot](#)
- [Blocking Peptides](#)
- [Dot Blot](#)
- [Immunohistochemistry](#)
- [Immunofluorescence](#)
- [Immunoprecipitation](#)
- [Flow Cytometry](#)
- [Cell Culture](#)

IL10RA Antibody (Center) - Images

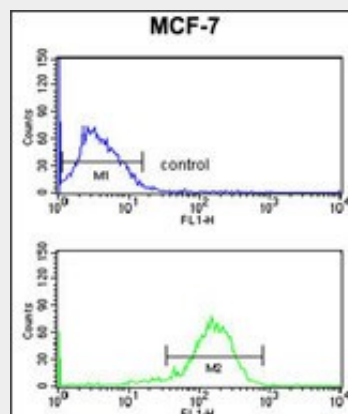


Confocal immunofluorescent analysis of IL10RA Antibody (Center)(Cat#AP8768c) with MCF-7 cell followed by Alexa Fluor® 488-conjugated goat anti-rabbit IgG (green). DAPI was used to stain the

cell nuclear (blue).



Anti-IL10RA Antibody (Center) at 1:1000 dilution + MCF-7 whole cell lysate Lysates/proteins at 20 µg per lane. Secondary Goat Anti-Rabbit IgG, (H+L), Peroxidase conjugated at 1/10000 dilution. Predicted band size : 63 kDa Blocking/Dilution buffer: 5% NFDM/TBST.



IL10RA Antibody (Center) (Cat. #AP8768c) flow cytometry analysis of MCF-7 cells (bottom histogram) compared to a negative control cell (top histogram). FITC-conjugated goat-anti-rabbit secondary antibodies were used for the analysis.

IL10RA Antibody (Center) - Background

IL10RA is a receptor for IL10; binds IL10 with a high affinity.

IL10RA Antibody (Center) - References

Jones B.C., et.al., Proc. Natl. Acad. Sci. U.S.A. 99:9404-9409(2002).