

DCT Antibody (N-term)
Affinity Purified Rabbit Polyclonal Antibody (Pab)
Catalog # AP8771A

Specification

DCT Antibody (N-term) - Product Information

Application	FC, IHC-P, WB,E
Primary Accession	P40126
Reactivity	Human
Host	Rabbit
Clonality	Polyclonal
Isotype	Rabbit IgG
Antigen Region	62-89

DCT Antibody (N-term) - Additional Information

Gene ID 1638

Other Names

L-dopachrome tautomerase, DCT, DT, L-dopachrome Delta-isomerase, Tyrosinase-related protein 2, TRP-2, TRP2, DCT, TYRP2

Target/Specificity

This DCT antibody is generated from rabbits immunized with a KLH conjugated synthetic peptide between 62-89 amino acids from the N-terminal region of human DCT.

Dilution

FC~~1:10~50
IHC-P~~1:10~50
WB~~1:1000
E~~Use at an assay dependent concentration.

Format

Purified polyclonal antibody supplied in PBS with 0.09% (W/V) sodium azide. This antibody is purified through a protein A column, followed by peptide affinity purification.

Storage

Maintain refrigerated at 2-8°C for up to 2 weeks. For long term storage store at -20°C in small aliquots to prevent freeze-thaw cycles.

Precautions

DCT Antibody (N-term) is for research use only and not for use in diagnostic or therapeutic procedures.

DCT Antibody (N-term) - Protein Information

Name DCT ([HGNC:2709](#))

Synonyms TYRP2

Function Plays a role in melanin biosynthesis (PubMed:[33100333](#)). Catalyzes the conversion of L-dopachrome into 5,6-dihydroxyindole-2- carboxylic acid (DHICA).

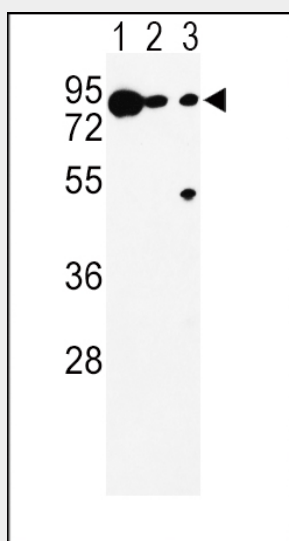
Cellular Location

Melanosome membrane; Single-pass type I membrane protein. Melanosome {ECO:0000250|UniProtKB:P29812}. Note=Proper trafficking to melanosome is regulated by SGSM2, ANKRD27, RAB9A, RAB32 and RAB38 {ECO:0000250|UniProtKB:P29812}

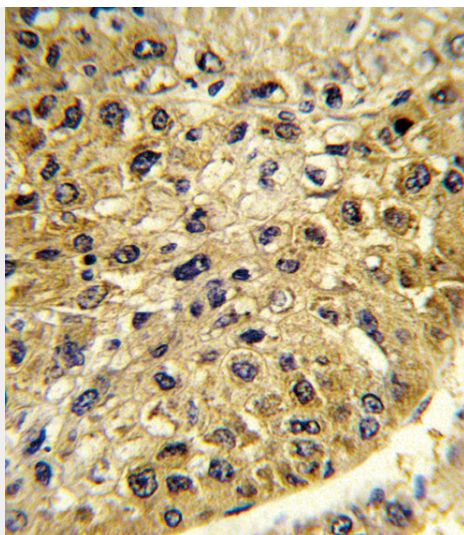
DCT Antibody (N-term) - Protocols

Provided below are standard protocols that you may find useful for product applications.

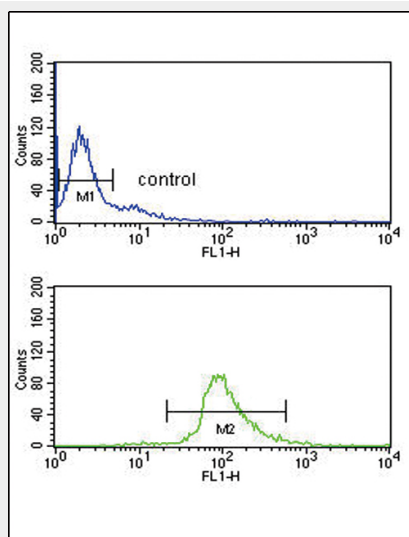
- [Western Blot](#)
- [Blocking Peptides](#)
- [Dot Blot](#)
- [Immunohistochemistry](#)
- [Immunofluorescence](#)
- [Immunoprecipitation](#)
- [Flow Cytometry](#)
- [Cell Culture](#)

DCT Antibody (N-term) - Images

Western blot analysis of DCT Antibody (N-term) (Cat. #AP8771a) in K562(lane 1), A375(lane 2), Ramos(lane 3) cell line lysates (35ug/lane). DCT (arrow) was detected using the purified Pab.



Formalin-fixed and paraffin-embedded human hepatocarcinoma reacted with DCT Antibody (N-term), which was peroxidase-conjugated to the secondary antibody, followed by DAB staining. This data demonstrates the use of this antibody for immunohistochemistry; clinical relevance has not been evaluated.



DCT Antibody (N-term) (Cat. #AP8771a) flow cytometry analysis of Ramos cells (bottom histogram) compared to a negative control (top histogram). FITC-conjugated goat-anti-rabbit secondary antibodies were used for the analysis.

DCT Antibody (N-term) - Background

DCT is involved in regulating eumelanin and phaeomelanin levels.

DCT Antibody (N-term) - References

Nishihira, J., et al., Biochem. Biophys. Res. Commun. 243 (2), 538-544 (1998)

DCT Antibody (N-term) - Citations

- [Recycled melanoma-secreted melanosomes regulate tumor-associated macrophage diversification](#)
- [Measles Vaccines Designed for Enhanced CD8 T Cell Activation](#)