

**CDC42EP3 Antibody (N-term)**  
**Affinity Purified Rabbit Polyclonal Antibody (Pab)**  
**Catalog # AP8775a**

**Specification**

---

**CDC42EP3 Antibody (N-term) - Product Information**

Application	FC, WB, IHC-P,E
Primary Accession	<a href="#">O9UKI2</a>
Other Accession	<a href="#">O9CQC5</a> , <a href="#">NP_006440</a>
Reactivity	Human
Predicted	Mouse
Host	Rabbit
Clonality	Polyclonal
Isotype	Rabbit IgG
Antigen Region	1-30

**CDC42EP3 Antibody (N-term) - Additional Information**

**Gene ID** 10602

**Other Names**

Cdc42 effector protein 3, Binder of Rho GTPases 2, MSE55-related Cdc42-binding protein, CDC42EP3, BORG2, CEP3

**Target/Specificity**

This CDC42EP3 antibody is generated from rabbits immunized with a KLH conjugated synthetic peptide between 1-30 amino acids from the N-terminal region of human CDC42EP3.

**Dilution**

FC~~1:10~50

WB~~1:1000

IHC-P~~1:50~100

E~~Use at an assay dependent concentration.

**Format**

Purified polyclonal antibody supplied in PBS with 0.09% (W/V) sodium azide. This antibody is purified through a protein A column, followed by peptide affinity purification.

**Storage**

Maintain refrigerated at 2-8°C for up to 2 weeks. For long term storage store at -20°C in small aliquots to prevent freeze-thaw cycles.

**Precautions**

CDC42EP3 Antibody (N-term) is for research use only and not for use in diagnostic or therapeutic procedures.

**CDC42EP3 Antibody (N-term) - Protein Information**

**Name** CDC42EP3

**Synonyms** BORG2, CEP3

**Function** Probably involved in the organization of the actin cytoskeleton. May act downstream of CDC42 to induce actin filament assembly leading to cell shape changes. Induces pseudopodia formation in fibroblasts.

**Cellular Location**

Endomembrane system; Peripheral membrane protein. Cytoplasm, cytoskeleton

**Tissue Location**

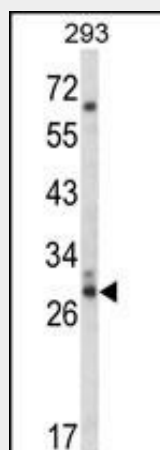
Highly expressed in the heart and weakly in the brain.

**CDC42EP3 Antibody (N-term) - Protocols**

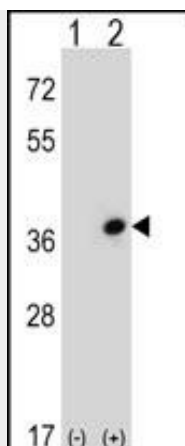
Provided below are standard protocols that you may find useful for product applications.

- [Western Blot](#)
- [Blocking Peptides](#)
- [Dot Blot](#)
- [Immunohistochemistry](#)
- [Immunofluorescence](#)
- [Immunoprecipitation](#)
- [Flow Cytometry](#)
- [Cell Culture](#)

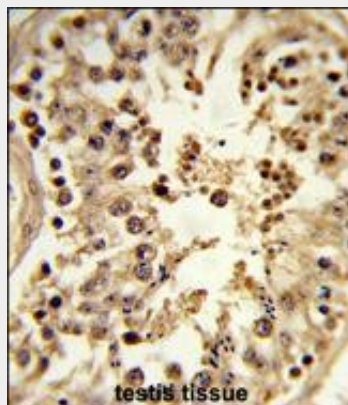
**CDC42EP3 Antibody (N-term) - Images**



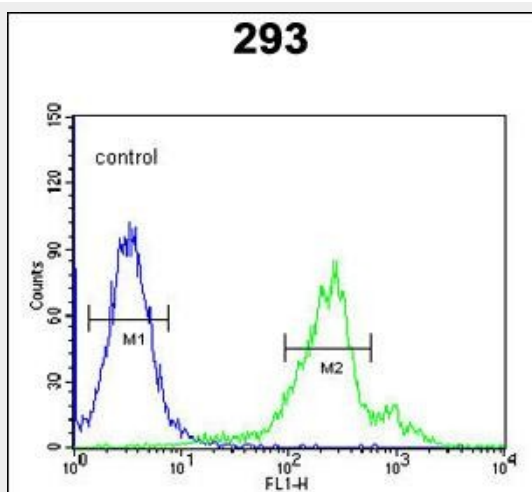
Western blot analysis of CDC42EP3 Antibody (N-term) (Cat. #AP8775a) in 293 cell line lysates (35ug/lane). CDC42EP3 (arrow) was detected using the purified Pab.



Western blot analysis of CDC42EP3 (arrow) using rabbit polyclonal CDC42EP3 Antibody (N-term) (Cat. #AP8775a). 293 cell lysates (2 ug/lane) either nontransfected (Lane 1) or transiently transfected (Lane 2) with the CDC42EP3 gene.



Formalin-fixed and paraffin-embedded human testis tissue reacted with CDC42EP3 Antibody (N-term), which was peroxidase-conjugated to the secondary antibody, followed by DAB staining. This data demonstrates the use of this antibody for immunohistochemistry; clinical relevance has not been evaluated.



CDC42EP3 Antibody (N-term) (Cat. #AP8775a) flow cytometric analysis of 293 cells (right histogram) compared to a negative control cell (left histogram). FITC-conjugated goat-anti-rabbit secondary antibodies were used for the analysis.

#### **CDC42EP3 Antibody (N-term) - Background**

CDC42EP3 is probably involved in the organization of the actin cytoskeleton. May act downstream of CDC42 to induce actin filament assembly leading to cell shape changes. It induces pseudopodia formation in fibroblasts.

#### **CDC42EP3 Antibody (N-term) - References**

Simpson,J.C., et.al., EMBO Rep. 1 (3), 287-292 (2000)