

ITGBL1 Antibody (Center)
Affinity Purified Rabbit Polyclonal Antibody (Pab)
Catalog # AP8781c**Specification**

ITGBL1 Antibody (Center) - Product Information

Application	FC, IHC-P, WB,E
Primary Accession	O95965
Reactivity	Human
Host	Rabbit
Clonality	Polyclonal
Isotype	Rabbit IgG
Calculated MW	53921
Antigen Region	334-360

ITGBL1 Antibody (Center) - Additional Information**Gene ID** 9358**Other Names**

Integrin beta-like protein 1, Osteoblast-specific cysteine-rich protein, Ten integrin EGF-like repeat domain-containing protein, ITGBL1, OSCP, TIED

Target/Specificity

This ITGBL1 antibody is generated from rabbits immunized with a KLH conjugated synthetic peptide between 334-360 amino acids from the Central region of human ITGBL1.

Dilution

FC~~1:10~50

IHC-P~~1:50~100

WB~~1:1000

E~~Use at an assay dependent concentration.

Format

Purified polyclonal antibody supplied in PBS with 0.09% (W/V) sodium azide. This antibody is purified through a protein A column, followed by peptide affinity purification.

Storage

Maintain refrigerated at 2-8°C for up to 2 weeks. For long term storage store at -20°C in small aliquots to prevent freeze-thaw cycles.

Precautions

ITGBL1 Antibody (Center) is for research use only and not for use in diagnostic or therapeutic procedures.

ITGBL1 Antibody (Center) - Protein Information**Name** ITGBL1

Synonyms OSCP, TIED

Cellular Location
Secreted.

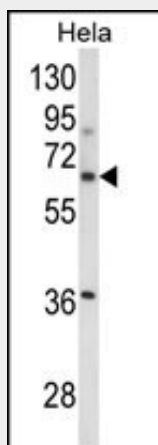
Tissue Location
Widely expressed in many tissues, but readily detectable only in aorta.

ITGBL1 Antibody (Center) - Protocols

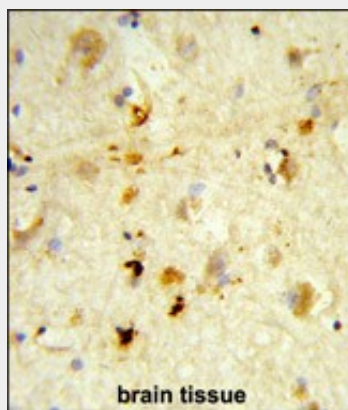
Provided below are standard protocols that you may find useful for product applications.

- [Western Blot](#)
- [Blocking Peptides](#)
- [Dot Blot](#)
- [Immunohistochemistry](#)
- [Immunofluorescence](#)
- [Immunoprecipitation](#)
- [Flow Cytometry](#)
- [Cell Culture](#)

ITGBL1 Antibody (Center) - Images

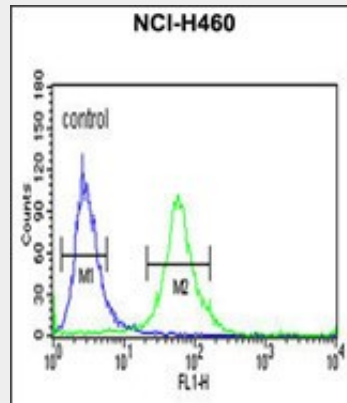


Western blot analysis of ITGBL1 Antibody (Center) (Cat. #AP8781c) in HeLa cell line lysates (35ug/lane). ITGBL1 (arrow) was detected using the purified Pab.



Formalin-fixed and paraffin-embedded human brain tissue reacted with ITGBL1 Antibody (Center),

which was peroxidase-conjugated to the secondary antibody, followed by DAB staining. This data demonstrates the use of this antibody for immunohistochemistry; clinical relevance has not been evaluated.



ITGBL1 Antibody (Center) (Cat. #AP8781c) flow cytometric analysis of NCI-H460 cells (right histogram) compared to a negative control cell (left histogram). FITC-conjugated goat-anti-rabbit secondary antibodies were used for the analysis.

ITGBL1 Antibody (Center) - Background

Osteoblast specific cysteine-rich protein (OSCP) is integrin, α like 1 (with EGF-like repeat domains).

ITGBL1 Antibody (Center) - References

Berg R.W., et.al., Genomics 56:169-178(1999).

ITGBL1 Antibody (Center) - Citations

- [Mechanical pressure-induced dedifferentiation of myofibroblasts inhibits scarring via SMYD3/ITGBL1 signaling](#)
- [Evaluation of the Role of ITGBL1 in Ovarian Cancer](#)