

**BIN3 Antibody (N-term)**  
**Affinity Purified Rabbit Polyclonal Antibody (Pab)**  
**Catalog # AP8794A****Specification**

---

**BIN3 Antibody (N-term) - Product Information**

Application	WB, IHC-P,E
Primary Accession	<a href="#">Q9NQY0</a>
Other Accession	<a href="#">Q5PPZ5</a>
Reactivity	Human
Predicted	Xenopus
Host	Rabbit
Clonality	Polyclonal
Isotype	Rabbit IgG
Calculated MW	29665
Antigen Region	1-30

**BIN3 Antibody (N-term) - Additional Information****Gene ID** 55909**Other Names**

Bridging integrator 3, BIN3

**Target/Specificity**

This BIN3 antibody is generated from rabbits immunized with a KLH conjugated synthetic peptide between 1-30 amino acids from the N-terminal region of human BIN3.

**Dilution**

WB~~1:1000

IHC-P~~1:50~100

E~~Use at an assay dependent concentration.

**Format**

Purified polyclonal antibody supplied in PBS with 0.09% (W/V) sodium azide. This antibody is purified through a protein A column, followed by peptide affinity purification.

**Storage**

Maintain refrigerated at 2-8°C for up to 2 weeks. For long term storage store at -20°C in small aliquots to prevent freeze-thaw cycles.

**Precautions**

BIN3 Antibody (N-term) is for research use only and not for use in diagnostic or therapeutic procedures.

**BIN3 Antibody (N-term) - Protein Information****Name** BIN3

**Function** Involved in cytokinesis and septation where it has a role in the localization of F-actin.

**Cellular Location**

Cytoplasm, cytoskeleton.

**Tissue Location**

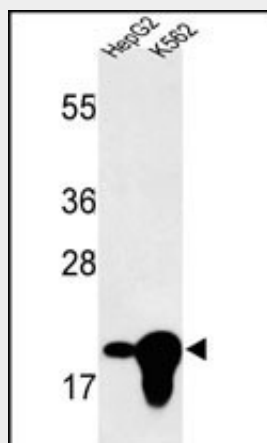
Ubiquitously expressed except in brain.

**BIN3 Antibody (N-term) - Protocols**

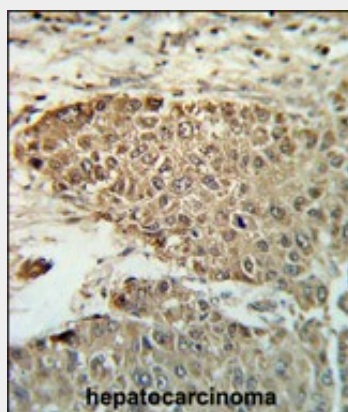
Provided below are standard protocols that you may find useful for product applications.

- [Western Blot](#)
- [Blocking Peptides](#)
- [Dot Blot](#)
- [Immunohistochemistry](#)
- [Immunofluorescence](#)
- [Immunoprecipitation](#)
- [Flow Cytometry](#)
- [Cell Culture](#)

**BIN3 Antibody (N-term) - Images**



Western blot analysis of BIN3 Antibody (N-term) (Cat. #AP8794a) in HepG2, K562 cell line lysates (35ug/lane). BIN3 (arrow) was detected using the purified Pab.



Formalin-fixed and paraffin-embedded human hepatocarcinoma reacted with BIN3 Antibody

(N-term), which was peroxidase-conjugated to the secondary antibody, followed by DAB staining. This data demonstrates the use of this antibody for immunohistochemistry; clinical relevance has not been evaluated.

**BIN3 Antibody (N-term) - Background**

BIN3 is a member of the BAR domain protein family. The encoded protein is comprised solely of a BAR domain which is predicted to form coiled-coil structures and proposed to mediate dimerization, sense and induce membrane curvature, and bind small GTPases. BAR domain proteins have been implicated in endocytosis, intracellular transport, and a diverse set of other processes.

**BIN3 Antibody (N-term) - References**

Ren,G., et.al., Microbiol. Mol. Biol. Rev. 70 (1), 37-120 (2006)