

WDSUB1 Antibody (Center)
Affinity Purified Rabbit Polyclonal Antibody (Pab)
Catalog # AP8816c**Specification**

WDSUB1 Antibody (Center) - Product Information

Application	FC, WB,E
Primary Accession	Q8N9V3
Reactivity	Human, Mouse
Host	Rabbit
Clonality	Polyclonal
Isotype	Rabbit IgG
Calculated MW	52833
Antigen Region	303-331

WDSUB1 Antibody (Center) - Additional Information**Gene ID** 151525**Other Names**

WD repeat, SAM and U-box domain-containing protein 1, WDSUB1, WDSAM1

Target/Specificity

This WDSUB1 antibody is generated from rabbits immunized with a KLH conjugated synthetic peptide between 303-331 amino acids from the Central region of human WDSUB1.

Dilution

FC~~1:10~50

WB~~1:1000

E~~Use at an assay dependent concentration.

Format

Purified polyclonal antibody supplied in PBS with 0.09% (W/V) sodium azide. This antibody is purified through a protein A column, followed by peptide affinity purification.

Storage

Maintain refrigerated at 2-8°C for up to 2 weeks. For long term storage store at -20°C in small aliquots to prevent freeze-thaw cycles.

Precautions

WDSUB1 Antibody (Center) is for research use only and not for use in diagnostic or therapeutic procedures.

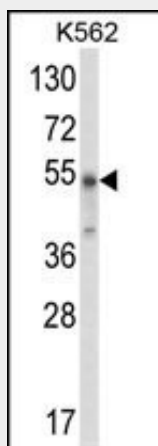
WDSUB1 Antibody (Center) - Protein Information**Name** WDSUB1**Synonyms** WDSAM1

WDSUB1 Antibody (Center) - Protocols

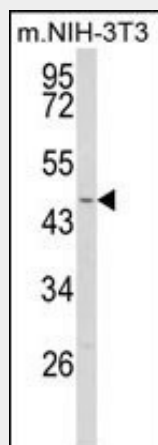
Provided below are standard protocols that you may find useful for product applications.

- [Western Blot](#)
- [Blocking Peptides](#)
- [Dot Blot](#)
- [Immunohistochemistry](#)
- [Immunofluorescence](#)
- [Immunoprecipitation](#)
- [Flow Cytometry](#)
- [Cell Culture](#)

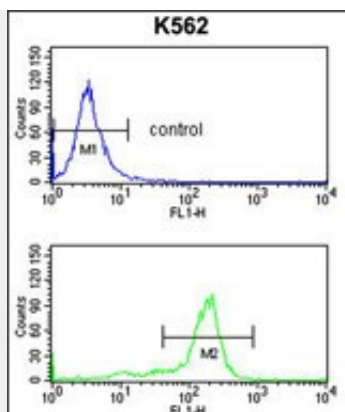
WDSUB1 Antibody (Center) - Images



Western blot analysis of WDSUB1 Antibody (Center) (Cat. #AP8816c) in K562 cell line lysates (35ug/lane). WDSUB1 (arrow) was detected using the purified Pab.



Western blot analysis of WDSUB1 Antibody (Center) (Cat. #AP8816c) in NIH-3T3 cell line lysates (35ug/lane). WDSUB1 (arrow) was detected using the purified Pab.



WDSUB1 Antibody (Center) (Cat. #AP8816c) flow cytometry analysis of K562 cells (bottom histogram) compared to a negative control cell (top histogram). FITC-conjugated goat-anti-rabbit secondary antibodies were used for the analysis.

WDSUB1 Antibody (Center) - Background

WD repeat-containing proteins are those that contain 4 or more copies of the WD-repeat (tryptophan-aspartate repeat), a sequence motif approximately 31 amino acids long, that encodes a structural repeat. There are two isoforms of WDSUB1.

WDSUB1 Antibody (Center) - References

Harrington, J.J., et.al., Nat. Biotechnol. 19 (5), 440-445 (2001)