

**COTL1 Antibody (C-term)**  
**Affinity Purified Rabbit Polyclonal Antibody (Pab)**  
**Catalog # AP8819b****Specification**

---

**COTL1 Antibody (C-term) - Product Information**

Application	WB, FC, IHC-P,E
Primary Accession	<a href="#">Q14019</a>
Other Accession	<a href="#">Q2HJ57</a> , <a href="#">NP_066972</a>
Reactivity	Human
Predicted	Bovine
Host	Rabbit
Clonality	Polyclonal
Isotype	Rabbit IgG
Calculated MW	15945
Antigen Region	115-142

**COTL1 Antibody (C-term) - Additional Information****Gene ID** 23406**Other Names**

Coactosin-like protein, COTL1, CLP

**Target/Specificity**

This COTL1 antibody is generated from rabbits immunized with a KLH conjugated synthetic peptide between 115-142 amino acids from the C-terminal region of human COTL1.

**Dilution**

WB~~1:1000

FC~~1:10~50

IHC-P~~1:50~100

E~~Use at an assay dependent concentration.

**Format**

Purified polyclonal antibody supplied in PBS with 0.09% (W/V) sodium azide. This antibody is purified through a protein A column, followed by peptide affinity purification.

**Storage**

Maintain refrigerated at 2-8°C for up to 2 weeks. For long term storage store at -20°C in small aliquots to prevent freeze-thaw cycles.

**Precautions**

COTL1 Antibody (C-term) is for research use only and not for use in diagnostic or therapeutic procedures.

**COTL1 Antibody (C-term) - Protein Information**

**Name** COTL1

**Synonyms** CLP

**Function** Binds to F-actin in a calcium-independent manner. Has no direct effect on actin depolymerization. Acts as a chaperone for ALOX5 (5LO), influencing both its stability and activity in leukotrienes synthesis.

**Cellular Location**

Cytoplasm. Cytoplasm, cytoskeleton. Nucleus

**Tissue Location**

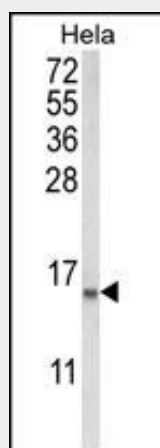
Widely expressed with highest levels in placenta, lung, kidney and peripheral blood leukocytes and lower levels in brain, liver and pancreas.

**COTL1 Antibody (C-term) - Protocols**

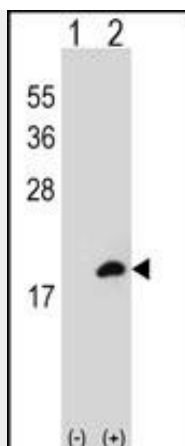
Provided below are standard protocols that you may find useful for product applications.

- [Western Blot](#)
- [Blocking Peptides](#)
- [Dot Blot](#)
- [Immunohistochemistry](#)
- [Immunofluorescence](#)
- [Immunoprecipitation](#)
- [Flow Cytometry](#)
- [Cell Culture](#)

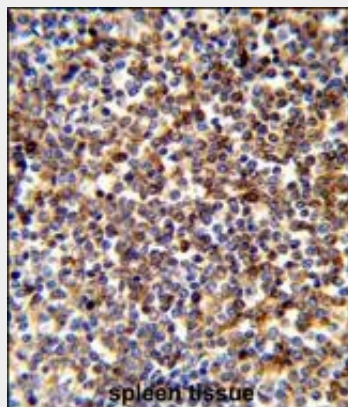
**COTL1 Antibody (C-term) - Images**



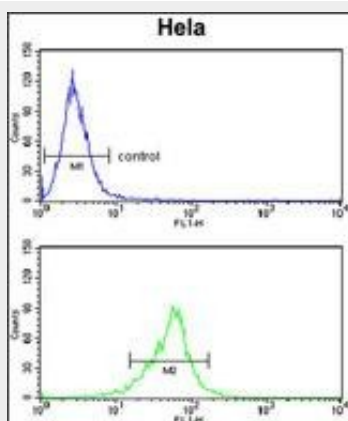
Western blot analysis of COTL1 Antibody (C-term) (Cat. #AP8819b) in HeLa cell line lysates (35ug/lane). COTL1 (arrow) was detected using the purified Pab.



Western blot analysis of COTL1 (arrow) using rabbit polyclonal COTL1 Antibody (C-term) (Cat. #AP8819b). 293 cell lysates (2 ug/lane) either nontransfected (Lane 1) or transiently transfected (Lane 2) with the COTL1 gene.



Formalin-fixed and paraffin-embedded human spleen tissue reacted with COTL1 Antibody (C-term), which was peroxidase-conjugated to the secondary antibody, followed by DAB staining. This data demonstrates the use of this antibody for immunohistochemistry; clinical relevance has not been evaluated.



COTL1 Antibody (C-term) (Cat. #AP8819b) flow cytometry analysis of HeLa cells (bottom histogram) compared to a negative control cell (top histogram). FITC-conjugated goat-anti-rabbit secondary antibodies were used for the analysis.

#### **COTL1 Antibody (C-term) - Background**

COTL1 is one of the numerous actin-binding proteins which regulate the actin cytoskeleton. This

protein binds F-actin, and also interacts with 5-lipoxygenase, which is the first committed enzyme in leukotriene biosynthesis.

#### **COTL1 Antibody (C-term) - References**

Provost,P., et.al., Proc. Natl. Acad. Sci. U.S.A. 96 (5), 1881-1885 (1999)  
Provost,P., et.al., J. Biol. Chem. 276 (19), 16520-16527 (2001)