

ASPSCR1 Antibody (C-term)
Affinity Purified Rabbit Polyclonal Antibody (Pab)
Catalog # AP8821b

Specification

ASPSCR1 Antibody (C-term) - Product Information

Application	FC, IHC-P, WB,E
Primary Accession	O9BZE9
Other Accession	O8VBT9
Reactivity	Human
Predicted	Mouse
Host	Rabbit
Clonality	Polyclonal
Isotype	Rabbit IgG
Antigen Region	392-418

ASPSCR1 Antibody (C-term) - Additional Information

Gene ID 79058

Other Names

Tether containing UBX domain for GLUT4, Alveolar soft part sarcoma chromosomal region candidate gene 1 protein, Alveolar soft part sarcoma locus, Renal papillary cell carcinoma protein 17, UBX domain-containing protein 9, ASPSCR1, ASPL, RCC17, TUG, UBXD9, UBXN9

Target/Specificity

This ASPSCR1 antibody is generated from rabbits immunized with a KLH conjugated synthetic peptide between 392-418 amino acids from the C-terminal region of human ASPSCR1.

Dilution

FC~~1:10~50

IHC-P~~1:50~100

WB~~1:1000

E~~Use at an assay dependent concentration.

Format

Purified polyclonal antibody supplied in PBS with 0.09% (W/V) sodium azide. This antibody is purified through a protein A column, followed by peptide affinity purification.

Storage

Maintain refrigerated at 2-8°C for up to 2 weeks. For long term storage store at -20°C in small aliquots to prevent freeze-thaw cycles.

Precautions

ASPSCR1 Antibody (C-term) is for research use only and not for use in diagnostic or therapeutic procedures.

ASPSCR1 Antibody (C-term) - Protein Information

Name ASPSCR1

Synonyms ASPL, RCC17, TUG, UBXD9, UBXN9

Function Tethering protein that sequesters GLUT4-containing vesicles in the cytoplasm in the absence of insulin. Modulates the amount of GLUT4 that is available at the cell surface (By similarity). Enhances VCP methylation catalyzed by VCPKMT.

Cellular Location

Endomembrane system; Peripheral membrane protein. Endoplasmic reticulum-Golgi intermediate compartment membrane; Peripheral membrane protein. Cytoplasm Nucleus

Tissue Location

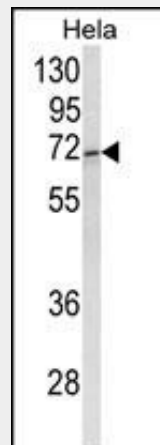
Ubiquitous. Highly expressed in testis, heart, skeletal muscle and pancreas.

ASPSCR1 Antibody (C-term) - Protocols

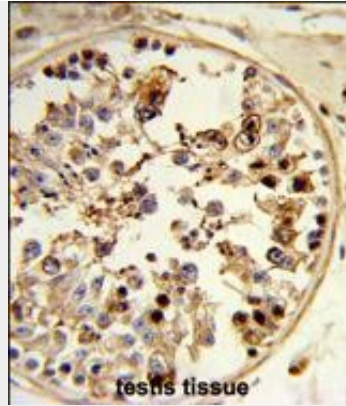
Provided below are standard protocols that you may find useful for product applications.

- [Western Blot](#)
- [Blocking Peptides](#)
- [Dot Blot](#)
- [Immunohistochemistry](#)
- [Immunofluorescence](#)
- [Immunoprecipitation](#)
- [Flow Cytometry](#)
- [Cell Culture](#)

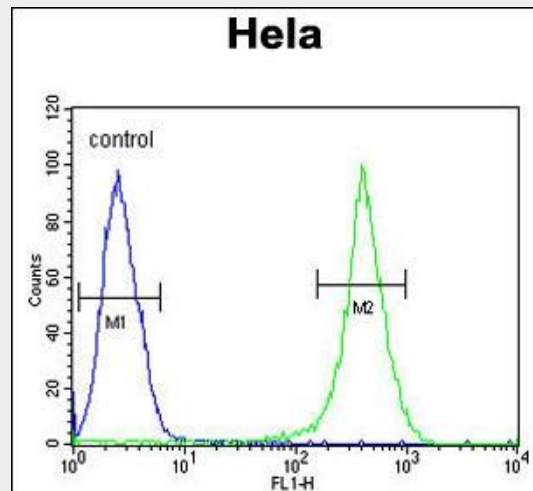
ASPSCR1 Antibody (C-term) - Images



Western blot analysis of ASPSCR1 Antibody (C-term) (Cat. #AP8821b) in HeLa cell line lysates (35ug/lane). ASPSCR1 (arrow) was detected using the purified Pab.



Formalin-fixed and paraffin-embedded human testis tissue reacted with ASPSCR1 Antibody (C-term), which was peroxidase-conjugated to the secondary antibody, followed by DAB staining. This data demonstrates the use of this antibody for immunohistochemistry; clinical relevance has not been evaluated.



ASPSCR1 Antibody (C-term) (Cat. #AP8821b) flow cytometric analysis of Hela cells (right histogram) compared to a negative control cell (left histogram).FITC-conjugated goat-anti-rabbit secondary antibodies were used for the analysis.

ASPSCR1 Antibody (C-term) - Background

ASPSCR1 is tethering protein that sequesters GLUT4-containing vesicles in the cytoplasm in the absence of insulin. Modulates the amount of GLUT4 that is available at the cell surface.

ASPSCR1 Antibody (C-term) - References

Bogan,J.S., et.al., Nature 425 (6959), 727-733 (2003)