

CANT1 Antibody (N-term)
Affinity Purified Rabbit Polyclonal Antibody (Pab)
Catalog # AP8822a

Specification

CANT1 Antibody (N-term) - Product Information

Application	FC, WB,E
Primary Accession	Q8WVQ1
Reactivity	Human
Host	Rabbit
Clonality	Polyclonal
Isotype	Rabbit IgG
Calculated MW	44840
Antigen Region	1-30

CANT1 Antibody (N-term) - Additional Information

Gene ID 124583

Other Names

Soluble calcium-activated nucleotidase 1, SCAN-1, Apyrase homolog, Putative MAPK-activating protein PM09, Putative NF-kappa-B-activating protein 107, CANT1, SHAPY

Target/Specificity

This CANT1 antibody is generated from rabbits immunized with a KLH conjugated synthetic peptide between 1-30 amino acids from the N-terminal region of human CANT1.

Dilution

FC~~1:10~50

WB~~1:1000

E~~Use at an assay dependent concentration.

Format

Purified polyclonal antibody supplied in PBS with 0.09% (W/V) sodium azide. This antibody is purified through a protein A column, followed by peptide affinity purification.

Storage

Maintain refrigerated at 2-8°C for up to 2 weeks. For long term storage store at -20°C in small aliquots to prevent freeze-thaw cycles.

Precautions

CANT1 Antibody (N-term) is for research use only and not for use in diagnostic or therapeutic procedures.

CANT1 Antibody (N-term) - Protein Information

Name CANT1

Synonyms SHAPY

Function Calcium-dependent nucleotidase with a preference for UDP. The order of activity with different substrates is UDP > GDP > UTP > GTP. Has very low activity towards ADP and even lower activity towards ATP. Does not hydrolyze AMP and GMP (PubMed:[12234496](#), PubMed:[15006348](#), PubMed:[15248776](#), PubMed:[16835225](#)). Involved in proteoglycan synthesis (PubMed:[22539336](#)).

Cellular Location

Endoplasmic reticulum membrane; Single-pass type II membrane protein. Golgi apparatus, Golgi stack membrane; Single-pass type II membrane protein. Cell membrane. Note=Processed form: Secreted

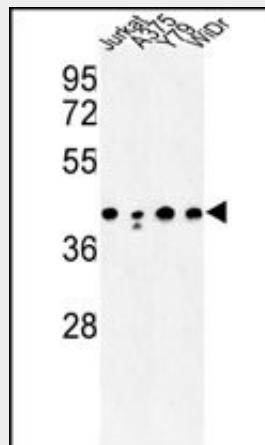
Tissue Location

Widely expressed..

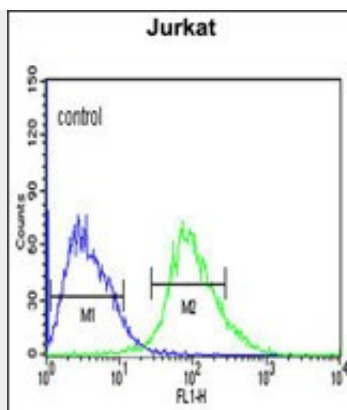
CANT1 Antibody (N-term) - Protocols

Provided below are standard protocols that you may find useful for product applications.

- [Western Blot](#)
- [Blocking Peptides](#)
- [Dot Blot](#)
- [Immunohistochemistry](#)
- [Immunofluorescence](#)
- [Immunoprecipitation](#)
- [Flow Cytometry](#)
- [Cell Culture](#)

CANT1 Antibody (N-term) - Images

Western blot analysis of CANT1 Antibody (N-term) (Cat. #AP8822a) in Jurkat, A375, Y79, WiDr cell line lysates (35ug/lane). CANT1 (arrow) was detected using the purified Pab.



CANT1 Antibody (N-term) (Cat. #AP8822a) flow cytometric analysis of Jurkat cells (right histogram) compared to a negative control cell (left histogram). FITC-conjugated goat-anti-rabbit secondary antibodies were used for the analysis.

CANT1 Antibody (N-term) - Background

CANT1 belongs to the apyrase family. It functions as a calcium-dependent nucleotidase with a preference for UDP.

CANT1 Antibody (N-term) - References

Dai, J., et.al., Cell 116 (5), 649-659 (2004)