

**RAC2 Antibody (C-term)**  
**Affinity Purified Rabbit Polyclonal Antibody (Pab)**  
**Catalog # AP8839b**

**Specification**

---

**RAC2 Antibody (C-term) - Product Information**

Application	FC, WB,E
Primary Accession	<a href="#">P15153</a>
Reactivity	Human
Host	Rabbit
Clonality	Polyclonal
Isotype	Rabbit IgG
Calculated MW	21429
Antigen Region	164-188

**RAC2 Antibody (C-term) - Additional Information**

**Gene ID** 5880

**Other Names**

Ras-related C3 botulinum toxin substrate 2, GX, Small G protein, p21-Rac2, RAC2

**Target/Specificity**

This RAC2 antibody is generated from rabbits immunized with a KLH conjugated synthetic peptide between 164-188 amino acids from the C-terminal region of human RAC2.

**Dilution**

FC~~1:10~50

WB~~1:1000

E~~Use at an assay dependent concentration.

**Format**

Purified polyclonal antibody supplied in PBS with 0.09% (W/V) sodium azide. This antibody is purified through a protein A column, followed by peptide affinity purification.

**Storage**

Maintain refrigerated at 2-8°C for up to 2 weeks. For long term storage store at -20°C in small aliquots to prevent freeze-thaw cycles.

**Precautions**

RAC2 Antibody (C-term) is for research use only and not for use in diagnostic or therapeutic procedures.

**RAC2 Antibody (C-term) - Protein Information**

**Name** RAC2 ([HGNC:9802](#))

**Function** Plasma membrane-associated small GTPase which cycles between an active GTP-bound

and inactive GDP-bound state (PubMed:[30723080](#)). In its active state, binds to a variety of effector proteins to regulate cellular responses, such as secretory processes, phagocytosis of apoptotic cells and epithelial cell polarization. Regulatory subunit of the phagocyte NADPH oxidase complex that mediates the transfer of electrons from cytosolic NADPH to O<sub>2</sub> to produce the superoxide anion (O<sub>2</sub><sup>-</sup>) (PubMed:[1660188](#)).

**Cellular Location**

Cytoplasm. Note=Membrane-associated when activated

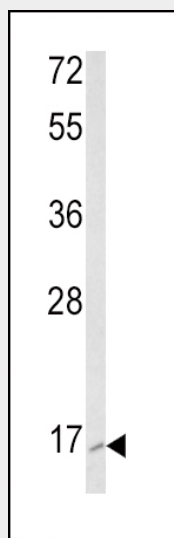
**Tissue Location**

Hematopoietic specific.

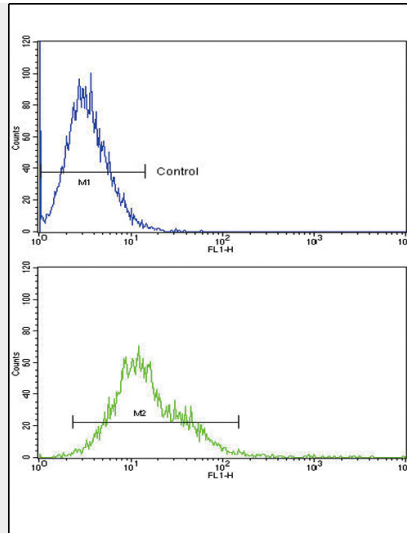
**RAC2 Antibody (C-term) - Protocols**

Provided below are standard protocols that you may find useful for product applications.

- [Western Blot](#)
- [Blocking Peptides](#)
- [Dot Blot](#)
- [Immunohistochemistry](#)
- [Immunofluorescence](#)
- [Immunoprecipitation](#)
- [Flow Cytometry](#)
- [Cell Culture](#)

**RAC2 Antibody (C-term) - Images**

Western blot analysis of RAC2 Antibody (C-term) (Cat. #AP8839b) in K562 cell line lysates (35ug/lane). RAC2 (arrow) was detected using the purified Pab.



RAC2 Antibody (C-term) (Cat. #AP8839b) flow cytometric analysis of k562 cells (bottom histogram) compared to a negative control cell (top histogram). FITC-conjugated goat-anti-rabbit secondary antibodies were used for the analysis.

#### **RAC2 Antibody (C-term) - Background**

RAC2 is a GTPase which belongs to the RAS superfamily of small GTP-binding proteins. Members of this superfamily appear to regulate a diverse array of cellular events, including the control of cell growth, cytoskeletal reorganization, and the activation of protein kinases.

#### **RAC2 Antibody (C-term) - References**

Reibel, L., et al., *Biochem. Biophys. Res. Commun.* 175 (2), 451-458 (1991)  
 Brechard, S., et al., *J. Leukoc. Biol.* 85 (4), 638-647 (2009)