

**PLCL1 Antibody (N-term)**  
**Affinity Purified Rabbit Polyclonal Antibody (Pab)**  
**Catalog # AP8850a**

**Specification**

---

**PLCL1 Antibody (N-term) - Product Information**

Application	FC, WB,E
Primary Accession	<a href="#">Q15111</a>
Other Accession	<a href="#">Q62688</a> , <a href="#">Q3USB7</a>
Reactivity	Human
Predicted	Mouse, Rat
Host	Rabbit
Clonality	Polyclonal
Isotype	Rabbit IgG
Calculated MW	122728
Antigen Region	149-176

**PLCL1 Antibody (N-term) - Additional Information**

**Gene ID** 5334

**Other Names**

Inactive phospholipase C-like protein 1, PLC-L1, Phospholipase C-deleted in lung carcinoma, Phospholipase C-related but catalytically inactive protein, PRIP, PLCL1

**Target/Specificity**

This PLCL1 antibody is generated from rabbits immunized with a KLH conjugated synthetic peptide between 149-176 amino acids from the N-terminal region of human PLCL1.

**Dilution**

FC~~1:10~50

WB~~1:1000

E~~Use at an assay dependent concentration.

**Format**

Purified polyclonal antibody supplied in PBS with 0.09% (W/V) sodium azide. This antibody is purified through a protein A column, followed by peptide affinity purification.

**Storage**

Maintain refrigerated at 2-8°C for up to 2 weeks. For long term storage store at -20°C in small aliquots to prevent freeze-thaw cycles.

**Precautions**

PLCL1 Antibody (N-term) is for research use only and not for use in diagnostic or therapeutic procedures.

**PLCL1 Antibody (N-term) - Protein Information**

**Name** PLCL1

**Function** Involved in an inositol phospholipid-based intracellular signaling cascade. Shows no PLC activity to phosphatidylinositol 4,5- biphosphate and phosphatidylinositol. Component in the phospho- dependent endocytosis process of GABA A receptor (By similarity). Regulates the turnover of receptors and thus contributes to the maintenance of GABA-mediated synaptic inhibition. Its aberrant expression could contribute to the genesis and progression of lung carcinoma. Acts as an inhibitor of PPP1C.

**Cellular Location**

Cytoplasm.

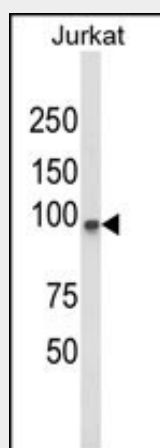
**Tissue Location**

Expressed in a variety of fetal and adult organs including brain, lung and kidney. Its expression was greatly reduced in small and non-small cell lung carcinoma. Isoform 1 is predominantly expressed in brain.

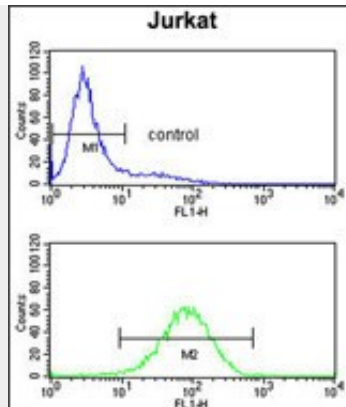
**PLCL1 Antibody (N-term) - Protocols**

Provided below are standard protocols that you may find useful for product applications.

- [Western Blot](#)
- [Blocking Peptides](#)
- [Dot Blot](#)
- [Immunohistochemistry](#)
- [Immunofluorescence](#)
- [Immunoprecipitation](#)
- [Flow Cytometry](#)
- [Cell Culture](#)

**PLCL1 Antibody (N-term) - Images**

Western blot analysis of PLCL1 Antibody (N-term) (Cat. #AP8850a) in Jurkat cell line lysates (35ug/lane). PLCL1 (arrow) was detected using the purified Pab.



PLCL1 Antibody (N-term) (Cat. #AP8850a) flow cytometry analysis of Jurkat cells (bottom histogram) compared to a negative control cell (top histogram). FITC-conjugated goat-anti-rabbit secondary antibodies were used for the analysis.

#### **PLCL1 Antibody (N-term) - Background**

PLCL1 is an inositol phospholipid-based intracellular signaling cascade. Shows no PLC activity to phosphatidylinositol 4,5-bisphosphate and sphatidylinositol. Component in the phospho-dependent endocytosis process of GABA A receptor (By similarity). Regulates the turnover of receptors and thus contributes to the maintenance of GABA-mediated synaptic inhibition. Its aberrant expression could contribute to the genesis and progression of lung carcinoma. Acts as a nhibitor of PPP1C.

#### **PLCL1 Antibody (N-term) - References**

Liu,Y.Z., et.al., PLoS ONE 3 (9), E3160 (2008)