

COL18A1 Antibody (N-term)
Affinity Purified Rabbit Polyclonal Antibody (Pab)
Catalog # AP8852a

Specification

COL18A1 Antibody (N-term) - Product Information

Application	FC, WB,E
Primary Accession	P39060
Reactivity	Human, Mouse
Host	Rabbit
Clonality	Polyclonal
Isotype	Rabbit IgG
Calculated MW	178188
Antigen Region	237-263

COL18A1 Antibody (N-term) - Additional Information

Gene ID 80781

Other Names

Collagen alpha-1(XVIII) chain, Endostatin, COL18A1

Target/Specificity

This COL18A1 antibody is generated from rabbits immunized with a KLH conjugated synthetic peptide between 237-263 amino acids from the N-terminal region of human COL18A1.

Dilution

FC~~1:10~50

WB~~1:1000

E~~Use at an assay dependent concentration.

Format

Purified polyclonal antibody supplied in PBS with 0.09% (W/V) sodium azide. This antibody is purified through a protein A column, followed by peptide affinity purification.

Storage

Maintain refrigerated at 2-8°C for up to 2 weeks. For long term storage store at -20°C in small aliquots to prevent freeze-thaw cycles.

Precautions

COL18A1 Antibody (N-term) is for research use only and not for use in diagnostic or therapeutic procedures.

COL18A1 Antibody (N-term) - Protein Information

Name COL18A1 ([HGNC:2195](#))

Function Probably plays a major role in determining the retinal structure as well as in the closure

of the neural tube.

Cellular Location

Secreted, extracellular space, extracellular matrix. Secreted, extracellular space, extracellular matrix, basement membrane {ECO:0000250|UniProtKB:P39061} [Endostatin]: Secreted. Secreted, extracellular space, extracellular matrix, basement membrane

Tissue Location

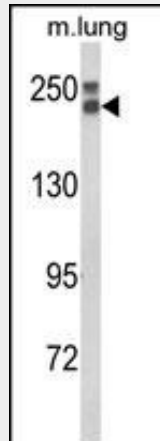
Detected in placenta (at protein level) (PubMed:32337544). Present in multiple organs with highest levels in liver, lung and kidney.

COL18A1 Antibody (N-term) - Protocols

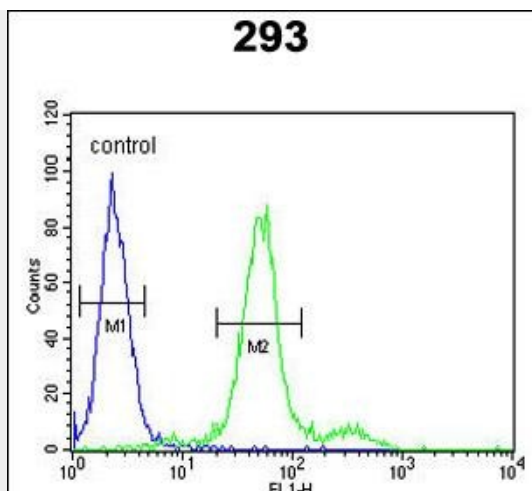
Provided below are standard protocols that you may find useful for product applications.

- [Western Blot](#)
- [Blocking Peptides](#)
- [Dot Blot](#)
- [Immunohistochemistry](#)
- [Immunofluorescence](#)
- [Immunoprecipitation](#)
- [Flow Cytometry](#)
- [Cell Culture](#)

COL18A1 Antibody (N-term) - Images



Western blot analysis of COL18A1 Antibody (N-term) (Cat. #AP8852a) in mouse lung tissue lysates (35ug/lane). COL18A1 (arrow) was detected using the purified Pab.



COL18A1 Antibody (N-term) (Cat. #AP8852a) flow cytometric analysis of 293 cells (right histogram) compared to a negative control cell (left histogram). FITC-conjugated goat-anti-rabbit secondary antibodies were used for the analysis.

COL18A1 Antibody (N-term) - Background

COL18A1 is encoding the alpha chain of type XVIII collagen. This collagen is one of the multiplexins, extracellular matrix proteins that contain multiple triple-helix domains (collagenous domains) interrupted by non-collagenous domains. The proteolytically produced C-terminal fragment of type XVIII collagen is endostatin, a potent antiangiogenic protein.

COL18A1 Antibody (N-term) - References

Fu, Y., et al., Biochemistry 48 (49), 11655-11663 (2009)