

**KLF16 Antibody (Center)**  
**Affinity Purified Rabbit Polyclonal Antibody (Pab)**  
**Catalog # AP8855c****Specification**

---

**KLF16 Antibody (Center) - Product Information**

Application	FC, WB,E
Primary Accession	<a href="#">O9B XK1</a>
Other Accession	<a href="#">P58334</a>
Reactivity	Human, Mouse
Host	Rabbit
Clonality	Polyclonal
Isotype	Rabbit IgG
Calculated MW	25431
Antigen Region	150-179

**KLF16 Antibody (Center) - Additional Information****Gene ID** 83855**Other Names**

Krueppel-like factor 16, Basic transcription element-binding protein 4, BTE-binding protein 4, Novel Sp1-like zinc finger transcription factor 2, Transcription factor BTEB4, Transcription factor NSLP2, KLF16, BTEB4, NSLP2

**Target/Specificity**

This KLF16 antibody is generated from rabbits immunized with a KLH conjugated synthetic peptide between 150-179 amino acids from the Central region of human KLF16.

**Dilution**

FC~~1:10~50

WB~~1:1000

E~~Use at an assay dependent concentration.

**Format**

Purified polyclonal antibody supplied in PBS with 0.09% (W/V) sodium azide. This antibody is purified through a protein A column, followed by peptide affinity purification.

**Storage**

Maintain refrigerated at 2-8°C for up to 2 weeks. For long term storage store at -20°C in small aliquots to prevent freeze-thaw cycles.

**Precautions**

KLF16 Antibody (Center) is for research use only and not for use in diagnostic or therapeutic procedures.

**KLF16 Antibody (Center) - Protein Information**

**Name** KLF16

**Synonyms** BTEB4, NSLP2

**Function** Transcription factor that binds GC and GT boxes and displaces Sp1 and Sp3 from these sequences. Modulates dopaminergic transmission in the brain (By similarity).

**Cellular Location**

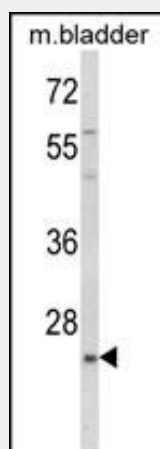
Nucleus.

### KLF16 Antibody (Center) - Protocols

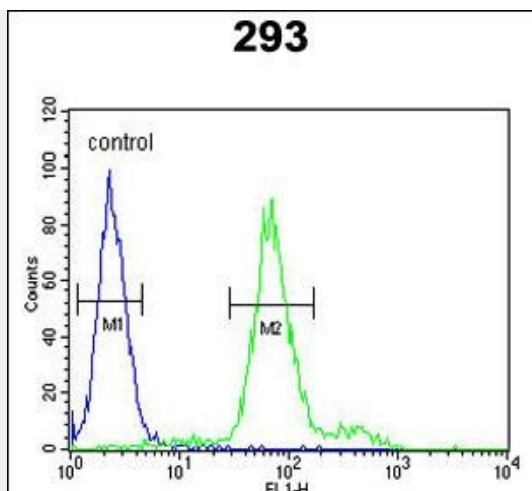
Provided below are standard protocols that you may find useful for product applications.

- [Western Blot](#)
- [Blocking Peptides](#)
- [Dot Blot](#)
- [Immunohistochemistry](#)
- [Immunofluorescence](#)
- [Immunoprecipitation](#)
- [Flow Cytometry](#)
- [Cell Culture](#)

### KLF16 Antibody (Center) - Images



Western blot analysis of KLF16 Antibody (Center) (Cat. #AP8855c) in mouse bladder tissue lysates (35ug/lane). KLF16 (arrow) was detected using the purified Pab.



KLF16 Antibody (Center) (Cat. #AP8855c) flow cytometric analysis of 293 cells (right histogram) compared to a negative control cell (left histogram). FITC-conjugated goat-anti-rabbit secondary antibodies were used for the analysis.

#### **KLF16 Antibody (Center) - Background**

KLF16 is a nuclear zinc finger transcription factor highly expressed in brain regions with abundant dopaminergic terminals, that binds GC and GT boxes and displaces Sp1 and Sp3 from these sequences. KLF16 modulates dopaminergic transmission in the brain.

#### **KLF16 Antibody (Center) - References**

Parker-Katirae, L., et al., PLoS Genet. 3 (5), E65 (2007)