

**CSRP2BP Antibody (Center)**  
**Affinity Purified Rabbit Polyclonal Antibody (Pab)**  
**Catalog # AP8865c**

**Specification**

---

**CSRP2BP Antibody (Center) - Product Information**

|                   |                        |
|-------------------|------------------------|
| Application       | WB, IHC-P,E            |
| Primary Accession | <a href="#">Q9H8E8</a> |
| Other Accession   | <a href="#">Q8CID0</a> |
| Reactivity        | Human, Mouse           |
| Host              | Rabbit                 |
| Clonality         | Polyclonal             |
| Isotype           | Rabbit IgG             |
| Antigen Region    | 246-275                |

**CSRP2BP Antibody (Center) - Additional Information**

**Gene ID** 57325

**Other Names**

Cysteine-rich protein 2-binding protein, CSRP2-binding protein, ADA2A-containing complex subunit 2, ATAC2, CRP2-binding partner, CRP2BP, CSRP2BP

**Target/Specificity**

This CSRP2BP antibody is generated from rabbits immunized with a KLH conjugated synthetic peptide between 246-275 amino acids from the Central region of human CSRP2BP.

**Dilution**

WB~~1:1000  
IHC-P~~1:50~100

**Format**

Purified polyclonal antibody supplied in PBS with 0.09% (W/V) sodium azide. This antibody is purified through a protein A column, followed by peptide affinity purification.

**Storage**

Maintain refrigerated at 2-8°C for up to 2 weeks. For long term storage store at -20°C in small aliquots to prevent freeze-thaw cycles.

**Precautions**

CSRP2BP Antibody (Center) is for research use only and not for use in diagnostic or therapeutic procedures.

**CSRP2BP Antibody (Center) - Protein Information**

**Name** KAT14 ([HGNC:15904](#))

**Synonyms** CSRP2BP

**Function** Component of the ATAC complex, a complex with histone acetyltransferase activity on histones H3 and H4. May function as a scaffold for the ATAC complex to promote ATAC complex stability. Has also weak histone acetyltransferase activity toward histone H4. Required for the normal progression through G1 and G2/M phases of the cell cycle.

**Cellular Location**

Nucleus. Cytoplasm. Note=Mainly nuclear.

**Tissue Location**

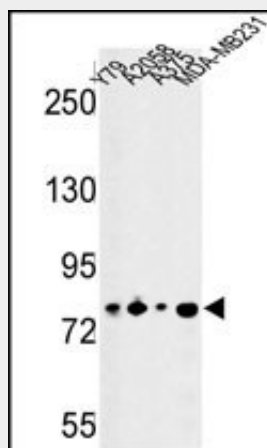
Expressed in skeletal muscle, heart, lung, placenta, brain, liver, pancreas and kidney. High expression in skeletal muscle and heart. Lower expression in lung

**CSRP2BP Antibody (Center) - Protocols**

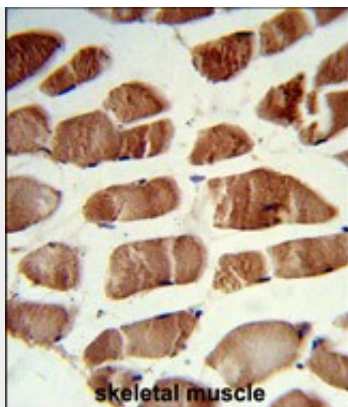
Provided below are standard protocols that you may find useful for product applications.

- [Western Blot](#)
- [Blocking Peptides](#)
- [Dot Blot](#)
- [Immunohistochemistry](#)
- [Immunofluorescence](#)
- [Immunoprecipitation](#)
- [Flow Cytometry](#)
- [Cell Culture](#)

**CSRP2BP Antibody (Center) - Images**



Western blot analysis of CSRP2BP Antibody (Center) (Cat. #AP8865c) in Y79, A2058, A375, MDA-MB231 cell line lysates (35ug/lane). CSRP2BP (arrow) was detected using the purified Pab.



Formalin-fixed and paraffin-embedded human skeletal muscle reacted with CSRP2BP Antibody (Center), which was peroxidase-conjugated to the secondary antibody, followed by DAB staining. This data demonstrates the use of this antibody for immunohistochemistry; clinical relevance has not been evaluated.

#### **CSRP2BP Antibody (Center) - Background**

CSRP2 is a protein containing two LIM domains, which are double zinc finger motifs found in proteins of diverse function. CSRP2 and some related proteins are thought to act as protein adapters, bridging two or more proteins to form a larger protein complex. The protein encoded by this gene binds to one of the LIM domains of CSRP2 and contains an acetyltransferase domain. Although the encoded protein has been detected in the cytoplasm, it is predominantly a nuclear protein. Two transcript variants encoding different isoforms have been found for this gene.

#### **CSRP2BP Antibody (Center) - References**

Venkatesan,K.,et.al., Nat. Methods 6 (1), 83-90 (2009)