

**RPGRIP1 Antibody (Center)**  
**Affinity Purified Rabbit Polyclonal Antibody (Pab)**  
**Catalog # AP8871c**

**Specification**

---

**RPGRIP1 Antibody (Center) - Product Information**

Application	FC, IHC-P, WB,E
Primary Accession	<a href="#">O96KN7</a>
Other Accession	<a href="#">NP_065099</a>
Reactivity	Human
Host	Rabbit
Clonality	Polyclonal
Isotype	Rabbit IgG
Calculated MW	146682
Antigen Region	530-557

**RPGRIP1 Antibody (Center) - Additional Information**

**Gene ID** 57096

**Other Names**

X-linked retinitis pigmentosa GTPase regulator-interacting protein 1, RPGR-interacting protein 1, RPGRIP1

**Target/Specificity**

This RPGRIP1 antibody is generated from rabbits immunized with a KLH conjugated synthetic peptide between 530-557 amino acids from the Central region of human RPGRIP1.

**Dilution**

FC~~1:10~50

IHC-P~~1:50~100

WB~~1:1000

E~~Use at an assay dependent concentration.

**Format**

Purified polyclonal antibody supplied in PBS with 0.09% (W/V) sodium azide. This antibody is purified through a protein A column, followed by peptide affinity purification.

**Storage**

Maintain refrigerated at 2-8°C for up to 2 weeks. For long term storage store at -20°C in small aliquots to prevent freeze-thaw cycles.

**Precautions**

RPGRIP1 Antibody (Center) is for research use only and not for use in diagnostic or therapeutic procedures.

**RPGRIP1 Antibody (Center) - Protein Information**

**Name** RPGRIP1

**Function** May function as scaffolding protein. Required for normal location of RPGR at the connecting cilium of photoreceptor cells. Required for normal disk morphogenesis and disk organization in the outer segment of photoreceptor cells and for survival of photoreceptor cells.

**Cellular Location**

Cell projection, cilium. Note=Situated between the axonemal microtubules and the plasma membrane (By similarity). In the retinal photoreceptor cell layer, localizes at the connecting cilium, a thin bridge linking the cell body and the light-sensing outer segment (By similarity). Colocalizes with RGPR in the photoreceptor connecting cilium (By similarity).  
{ECO:0000250|UniProtKB:Q9EPQ2}

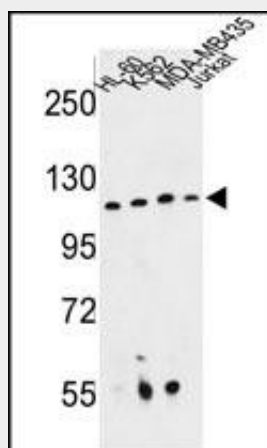
**Tissue Location**

Strong expression in retina, with weaker expression in testis. Expressed in other neurons such as amacrine cells Colocalizes with RGPR in the outer segment of rod photoreceptors and cone outer segments.

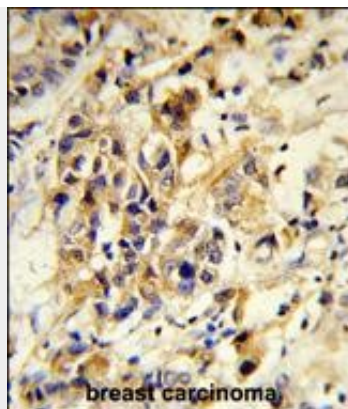
**RPGRIP1 Antibody (Center) - Protocols**

Provided below are standard protocols that you may find useful for product applications.

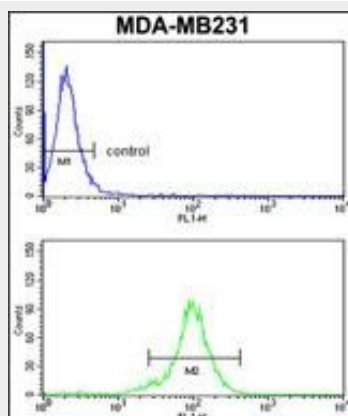
- [Western Blot](#)
- [Blocking Peptides](#)
- [Dot Blot](#)
- [Immunohistochemistry](#)
- [Immunofluorescence](#)
- [Immunoprecipitation](#)
- [Flow Cytometry](#)
- [Cell Culture](#)

**RPGRIP1 Antibody (Center) - Images**

Western blot analysis of RPGRIP1 Antibody (Center) (Cat. #AP8871c) in HL-60, K562, MDA-MB435, Jurkat cell line lysates (35ug/lane). RPGRIP1 (arrow) was detected using the purified Pab.



Formalin-fixed and paraffin-embedded human breast carcinoma reacted with RPGRIP1 Antibody (Center), which was peroxidase-conjugated to the secondary antibody, followed by DAB staining. This data demonstrates the use of this antibody for immunohistochemistry; clinical relevance has not been evaluated.



RPGRIP1 Antibody (Center) (Cat.#AP8871c) flow cytometry analysis of MDA-MB231 cells (bottom histogram) compared to a negative control cell (top histogram). FITC-conjugated goat-anti-rabbit secondary antibodies were used for the analysis.

#### **RPGRIP1 Antibody (Center) - Background**

RPGRIP1 is a photoreceptor protein that interacts with retinitis pigmentosa GTPase regulator protein and is a key component of cone and rod photoreceptor cells.

#### **RPGRIP1 Antibody (Center) - References**

Arts,H.H.,et.al., Nat. Genet. 39 (7), 882-888 (2007)