

GLIS1 Antibody (N-term)
Affinity Purified Rabbit Polyclonal Antibody (Pab)
Catalog # AP8878A**Specification**

GLIS1 Antibody (N-term) - Product Information

Application	IHC-P, WB,E
Primary Accession	Q8NBF1
Reactivity	Human, Mouse
Host	Rabbit
Clonality	Polyclonal
Isotype	Rabbit IgG
Calculated MW	65976
Antigen Region	133-161

GLIS1 Antibody (N-term) - Additional Information**Gene ID** 148979**Other Names**

Zinc finger protein GLIS1, GLI-similar 1, GLIS1 (HGNC:29525)

Target/Specificity

This GLIS1 antibody is generated from rabbits immunized with a KLH conjugated synthetic peptide between 133-161 amino acids from the N-terminal region of human GLIS1.

Dilution

IHC-P~~1:50~100

WB~~1:1000

E~~Use at an assay dependent concentration.

Format

Purified polyclonal antibody supplied in PBS with 0.09% (W/V) sodium azide. This antibody is purified through a protein A column, followed by peptide affinity purification.

Storage

Maintain refrigerated at 2-8°C for up to 2 weeks. For long term storage store at -20°C in small aliquots to prevent freeze-thaw cycles.

Precautions

GLIS1 Antibody (N-term) is for research use only and not for use in diagnostic or therapeutic procedures.

GLIS1 Antibody (N-term) - Protein Information**Name** GLIS1 ([HGNC:29525](#))

Function Acts both as a repressor and an activator of transcription (PubMed:[21654807](#)). Binds to the consensus sequence 5'-GACCACCCAC-3' (By similarity). By controlling the expression of genes involved in cell differentiation inhibits the lineage commitment of multipotent cells (PubMed:[21654807](#)). Prevents, for instance, the differentiation of multipotent mesenchymal cells into adipocyte and osteoblast (By similarity).

Cellular Location

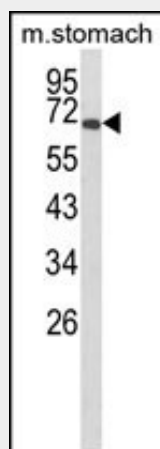
Nucleus {ECO:0000250|UniProtKB:Q8K1M4}.

GLIS1 Antibody (N-term) - Protocols

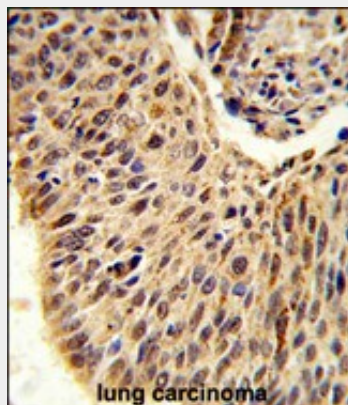
Provided below are standard protocols that you may find useful for product applications.

- [Western Blot](#)
- [Blocking Peptides](#)
- [Dot Blot](#)
- [Immunohistochemistry](#)
- [Immunofluorescence](#)
- [Immunoprecipitation](#)
- [Flow Cytometry](#)
- [Cell Culture](#)

GLIS1 Antibody (N-term) - Images



Western blot analysis of GLIS1 Antibody (N-term) (Cat. #AP8878a) in mouse stomach tissue lysates (35ug/lane). GLIS1 (arrow) was detected using the purified Pab.



Formalin-fixed and paraffin-embedded human lung carcinoma reacted with GLIS1 Antibody (N-term), which was peroxidase-conjugated to the secondary antibody, followed by DAB staining. This data demonstrates the use of this antibody for immunohistochemistry; clinical relevance has not been evaluated.

GLIS1 Antibody (N-term) - Background

GLIS1 is a GLI (MIM 165220)-related Kruppel-like zinc finger protein that functions as an activator and repressor of transcription (Kim et al., 2002 [PubMed 12042312]).

GLIS1 Antibody (N-term) - References

Kim,Y.S., et.al., Nucleic Acids Res. 31 (19), 5513-5525 (2003)
Nakanishi,G., et.al., J. Invest. Dermatol. 126 (1), 49-60 (2006)