

GPA33 Antibody (C-term)
Affinity Purified Rabbit Polyclonal Antibody (Pab)
Catalog # AP8888B

Specification

GPA33 Antibody (C-term) - Product Information

Application	FC, IHC-P, WB,E
Primary Accession	Q99795
Reactivity	Human
Host	Rabbit
Clonality	Polyclonal
Isotype	Rabbit IgG
Calculated MW	35632
Antigen Region	264-293

GPA33 Antibody (C-term) - Additional Information

Gene ID 10223

Other Names

Cell surface A33 antigen, Glycoprotein A33, GPA33

Target/Specificity

This GPA33 antibody is generated from rabbits immunized with a KLH conjugated synthetic peptide between 264-293 amino acids from the C-terminal region of human GPA33.

Dilution

FC~~1:10~50

IHC-P~~1:50~100

WB~~1:1000

E~~Use at an assay dependent concentration.

Format

Purified polyclonal antibody supplied in PBS with 0.09% (W/V) sodium azide. This antibody is purified through a protein A column, followed by peptide affinity purification.

Storage

Maintain refrigerated at 2-8°C for up to 2 weeks. For long term storage store at -20°C in small aliquots to prevent freeze-thaw cycles.

Precautions

GPA33 Antibody (C-term) is for research use only and not for use in diagnostic or therapeutic procedures.

GPA33 Antibody (C-term) - Protein Information

Name GPA33

Function May play a role in cell-cell recognition and signaling.

Cellular Location

Membrane; Single-pass type I membrane protein.

Tissue Location

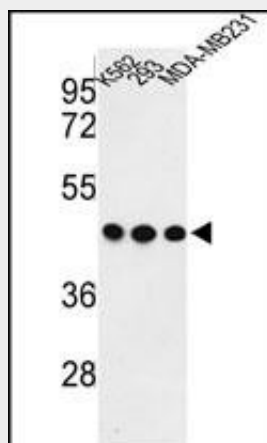
Expressed in normal gastrointestinal epithelium and in 95% of colon cancers

GPA33 Antibody (C-term) - Protocols

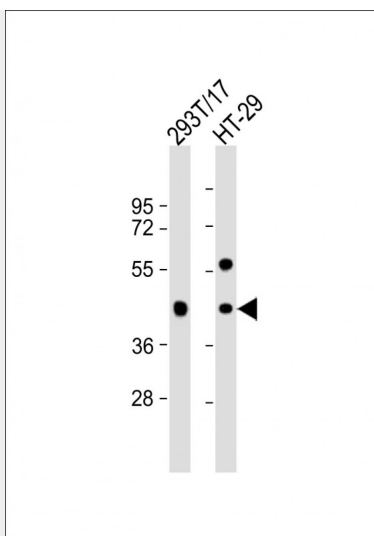
Provided below are standard protocols that you may find useful for product applications.

- [Western Blot](#)
- [Blocking Peptides](#)
- [Dot Blot](#)
- [Immunohistochemistry](#)
- [Immunofluorescence](#)
- [Immunoprecipitation](#)
- [Flow Cytometry](#)
- [Cell Culture](#)

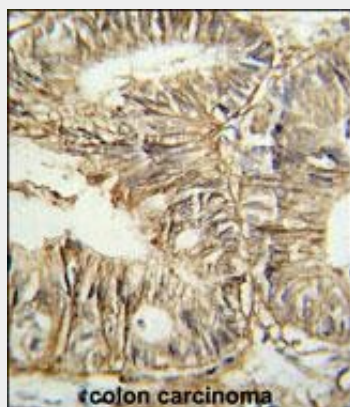
GPA33 Antibody (C-term) - Images



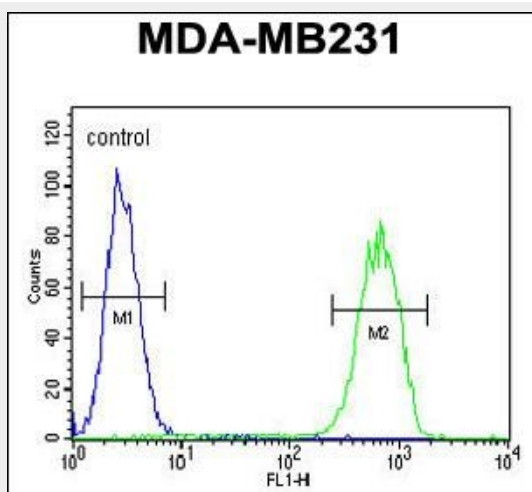
Western blot analysis of GPA33 Antibody (C-term) (Cat. #AP8888b) in K562, 293, MDA-MB231 cell line lysates (35ug/lane). GPA33 (arrow) was detected using the purified Pab.



All lanes : Anti-GPA33 Antibody (C-term) at 1:1000 dilution Lane 1: 293T/17 whole cell lysate Lane 2: HT-29 whole cell lysate Lysates/proteins at 20 μ g per lane. Secondary Goat Anti-Rabbit IgG, (H+L), Peroxidase conjugated at 1/10000 dilution. Predicted band size : 36 kDa Blocking/Dilution buffer: 5% NFDM/TBST.



GPA33 Antibody (C-term) (Cat. #AP8888b) IHC analysis in formalin fixed and paraffin embedded human colon carcinoma followed by peroxidase conjugation of the secondary antibody and DAB staining. This data demonstrates the use of the GPA33 Antibody (C-term) for immunohistochemistry. Clinical relevance has not been evaluated.



GPA33 Antibody (C-term) (Cat. #AP8888b) flow cytometric analysis of MDA-MB231 cells (right

histogram) compared to a negative control cell (left histogram).FITC-conjugated goat-anti-rabbit secondary antibodies were used for the analysis.

GPA33 Antibody (C-term) - Background

GPA33 is a cell surface antigen that is expressed in greater than 95% of human colon cancers. It may play a role in cell-cell recognition and signaling.

GPA33 Antibody (C-term) - References

Moritz,R.L., et.al., J Chromatogr A 798 (1-2), 91-101 (1998)