

INPP4B Antibody (Center)
Affinity Purified Rabbit Polyclonal Antibody (Pab)
Catalog # AP8902c

Specification

INPP4B Antibody (Center) - Product Information

Application	WB, IHC-P, FC,E
Primary Accession	O15327
Other Accession	Q9QWG5 , Q6P1Y8 , Q4R4D7
Reactivity	Human
Predicted	Monkey, Mouse, Rat
Host	Rabbit
Clonality	Polyclonal
Isotype	Rabbit IgG
Calculated MW	104738
Antigen Region	367-393

INPP4B Antibody (Center) - Additional Information

Gene ID 8821

Other Names

Type II inositol 3, 4-bisphosphate 4-phosphatase, Inositol polyphosphate 4-phosphatase type II, INPP4B

Target/Specificity

This INPP4B antibody is generated from rabbits immunized with a KLH conjugated synthetic peptide between 367-393 amino acids from the Central region of human INPP4B.

Dilution

WB~~1:500
IHC-P~~1:50~100
FC~~1:10~50

Format

Purified polyclonal antibody supplied in PBS with 0.09% (W/V) sodium azide. This antibody is purified through a protein A column, followed by peptide affinity purification.

Storage

Maintain refrigerated at 2-8°C for up to 2 weeks. For long term storage store at -20°C in small aliquots to prevent freeze-thaw cycles.

Precautions

INPP4B Antibody (Center) is for research use only and not for use in diagnostic or therapeutic procedures.

INPP4B Antibody (Center) - Protein Information

Name INPP4B

Function Catalyzes the hydrolysis of the 4-position phosphate of phosphatidylinositol 3,4-bisphosphate, inositol 1,3,4-trisphosphate and inositol 3,4-trisphosphate (PubMed:[24070612](#), PubMed:[24591580](#)). Plays a role in the late stages of macropinocytosis by dephosphorylating phosphatidylinositol 3,4-bisphosphate in membrane ruffles (PubMed:[24591580](#)). The lipid phosphatase activity is critical for tumor suppressor function. Antagonizes the PI3K-AKT/PKB signaling pathway by dephosphorylating phosphoinositides and thereby modulating cell cycle progression and cell survival (PubMed:[19647222](#), PubMed:[24070612](#)).

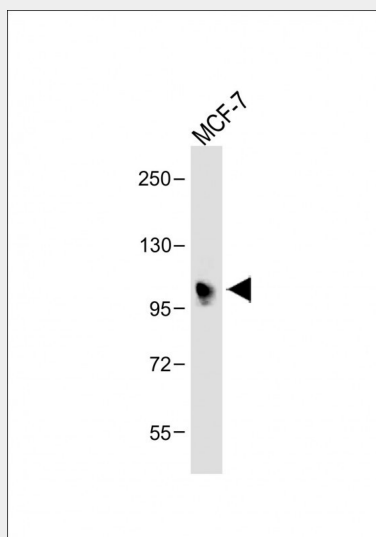
Tissue Location

Widely expressed with highest levels occurring in the skeletal muscle and heart.

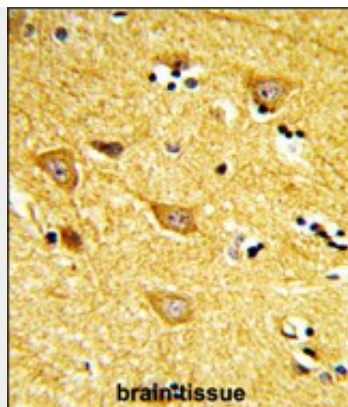
INPP4B Antibody (Center) - Protocols

Provided below are standard protocols that you may find useful for product applications.

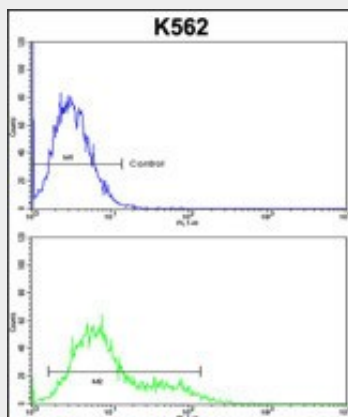
- [Western Blot](#)
- [Blocking Peptides](#)
- [Dot Blot](#)
- [Immunohistochemistry](#)
- [Immunofluorescence](#)
- [Immunoprecipitation](#)
- [Flow Cytometry](#)
- [Cell Culture](#)

INPP4B Antibody (Center) - Images

Anti-INPP4B Antibody (Center) at 1:500 dilution + MCF-7 whole cell lysate Lysates/proteins at 20 µg per lane. Secondary Goat Anti-Rabbit IgG, (H+L), Peroxidase conjugated at 1/10000 dilution. Predicted band size : 105 kDa Blocking/Dilution buffer: 5% NFDM/TBST.



Formalin-fixed and paraffin-embedded human brain tissue reacted with INPP4B Antibody (Center), which was peroxidase-conjugated to the secondary antibody, followed by DAB staining. This data demonstrates the use of this antibody for immunohistochemistry; clinical relevance has not been evaluated.



INPP4B Antibody (Center) (Cat. #AP8902c) flow cytometric analysis of k562 cells (bottom histogram) compared to a negative control cell (top histogram). FITC-conjugated goat-anti-rabbit secondary antibodies were used for the analysis.

INPP4B Antibody (Center) - Background

INPP4B catalyzes the hydrolysis of the 4-position phosphate of phosphatidylinositol 3,4-bisphosphate, inositol 1,3,4-trisphosphate and inositol 1,4-bisphosphate.

INPP4B Antibody (Center) - References

Norris F.A., et.al., J. Biol. Chem. 272:23859-23864(1997).