

**CBX1 Antibody (C-term)**  
**Affinity Purified Rabbit Polyclonal Antibody (Pab)**  
**Catalog # AP8915c****Specification**

---

**CBX1 Antibody (C-term) - Product Information**

Application	FC, IHC-P, WB,E
Primary Accession	<a href="#">P83916</a>
Other Accession	<a href="#">P83917</a>
Reactivity	Human
Predicted	Mouse
Host	Rabbit
Clonality	Polyclonal
Isotype	Rabbit IgG
Calculated MW	21418
Antigen Region	128-155

**CBX1 Antibody (C-term) - Additional Information****Gene ID** 10951**Other Names**

Chromobox protein homolog 1, HP1Hsbeta, Heterochromatin protein 1 homolog beta, HP1 beta, Heterochromatin protein p25, M31, Modifier 1 protein, p25beta, CBX1, CBX

**Target/Specificity**

This CBX1 antibody is generated from rabbits immunized with a KLH conjugated synthetic peptide between 128-155 amino acids from the C-terminal region of human CBX1.

**Dilution**

FC~~1:10~50

IHC-P~~1:50~100

WB~~1:1000

E~~Use at an assay dependent concentration.

**Format**

Purified polyclonal antibody supplied in PBS with 0.09% (W/V) sodium azide. This antibody is purified through a protein A column, followed by peptide affinity purification.

**Storage**

Maintain refrigerated at 2-8°C for up to 2 weeks. For long term storage store at -20°C in small aliquots to prevent freeze-thaw cycles.

**Precautions**

CBX1 Antibody (C-term) is for research use only and not for use in diagnostic or therapeutic procedures.

**CBX1 Antibody (C-term) - Protein Information**

**Name** CBX1

**Synonyms** CBX

**Function** Component of heterochromatin. Recognizes and binds histone H3 tails methylated at 'Lys-9', leading to epigenetic repression. Interaction with lamin B receptor (LBR) can contribute to the association of the heterochromatin with the inner nuclear membrane.

**Cellular Location**

Nucleus Note=Unassociated with chromosomes during mitosis

**Tissue Location**

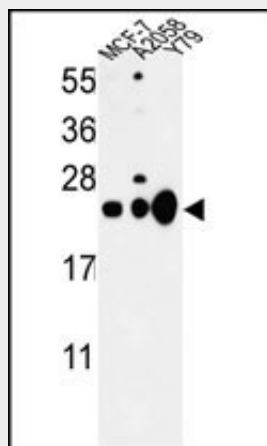
Expressed in all adult and embryonic tissues.

**CBX1 Antibody (C-term) - Protocols**

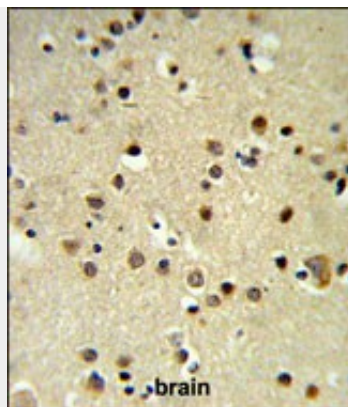
Provided below are standard protocols that you may find useful for product applications.

- [Western Blot](#)
- [Blocking Peptides](#)
- [Dot Blot](#)
- [Immunohistochemistry](#)
- [Immunofluorescence](#)
- [Immunoprecipitation](#)
- [Flow Cytometry](#)
- [Cell Culture](#)

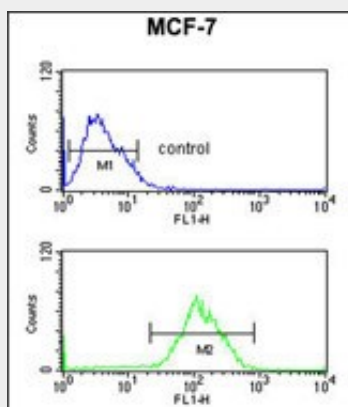
**CBX1 Antibody (C-term) - Images**



Western blot analysis of CBX1 Antibody (C-term) (Cat. #AP8915c) in MCF-7, A2058, Y79 cell line lysates (35ug/lane). CBX1 (arrow) was detected using the purified Pab.



CBX1 Antibody (C-term) (Cat. #AP8915c) IHC analysis in formalin fixed and paraffin embedded brain tissue followed by peroxidase conjugation of the secondary antibody and DAB staining. This data demonstrates the use of the CBX1 Antibody (C-term) for immunohistochemistry. Clinical relevance has not been evaluated.



CBX1 Antibody (C-term) (Cat. #AP8915c) flow cytometric analysis of MCF-7 cells (bottom histogram) compared to a negative control cell (top histogram). FITC-conjugated goat-anti-rabbit secondary antibodies were used for the analysis.

### CBX1 Antibody (C-term) - Background

CBX1 is a highly conserved nonhistone protein, which is a member of the heterochromatin protein family. The protein is enriched in the heterochromatin and associated with centromeres. The protein has a single N-terminal chromodomain which can bind to histone proteins via methylated lysine residues, and a C-terminal chromo shadow-domain (CSD) which is responsible for the homodimerization and interaction with a number of chromatin-associated nonhistone proteins. The protein may play an important role in the epigenetic control of chromatin structure and gene expression.

### CBX1 Antibody (C-term) - References

Aagaard, L., et al., EMBO J. 18 (7), 1923-1938 (1999)