

ETV6 Antibody (N-term)
Affinity Purified Rabbit Polyclonal Antibody (Pab)
Catalog # AP8917a

Specification

ETV6 Antibody (N-term) - Product Information

Application	WB, FC, IHC-P,E
Primary Accession	P41212
Other Accession	P97360 , Q0VC65
Reactivity	Human
Predicted	Bovine, Mouse
Host	Rabbit
Clonality	Polyclonal
Isotype	Rabbit IgG
Calculated MW	53000
Antigen Region	84-111

ETV6 Antibody (N-term) - Additional Information

Gene ID 2120

Other Names

Transcription factor ETV6, ETS translocation variant 6, ETS-related protein Tel1, Tel, ETV6, TEL, TEL1

Target/Specificity

This ETV6 antibody is generated from rabbits immunized with a KLH conjugated synthetic peptide between 84-111 amino acids from the N-terminal region of human ETV6.

Dilution

WB~~1:2000
FC~~1:10~50
IHC-P~~1:10~50
E~~Use at an assay dependent concentration.

Format

Purified polyclonal antibody supplied in PBS with 0.09% (W/V) sodium azide. This antibody is purified through a protein A column, followed by peptide affinity purification.

Storage

Maintain refrigerated at 2-8°C for up to 2 weeks. For long term storage store at -20°C in small aliquots to prevent freeze-thaw cycles.

Precautions

ETV6 Antibody (N-term) is for research use only and not for use in diagnostic or therapeutic procedures.

ETV6 Antibody (N-term) - Protein Information

Name ETV6

Synonyms TEL, TEL1

Function Transcriptional repressor; binds to the DNA sequence 5'- CCGGAAGT-3'. Plays a role in hematopoiesis and malignant transformation.

Cellular Location

Nucleus.

Tissue Location

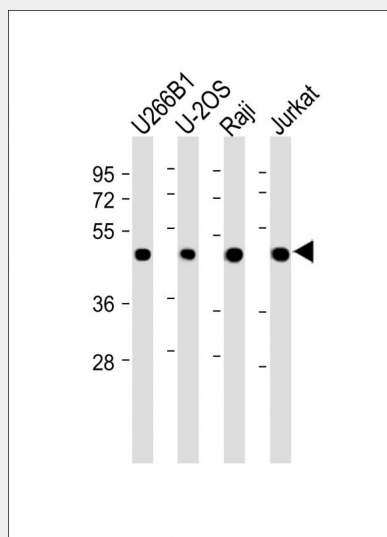
Ubiquitous.

ETV6 Antibody (N-term) - Protocols

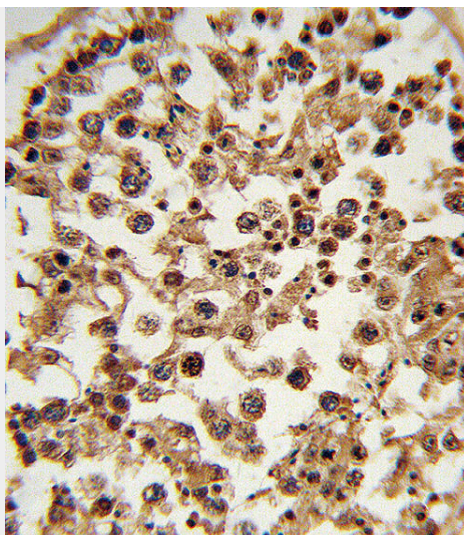
Provided below are standard protocols that you may find useful for product applications.

- [Western Blot](#)
- [Blocking Peptides](#)
- [Dot Blot](#)
- [Immunohistochemistry](#)
- [Immunofluorescence](#)
- [Immunoprecipitation](#)
- [Flow Cytometry](#)
- [Cell Culture](#)

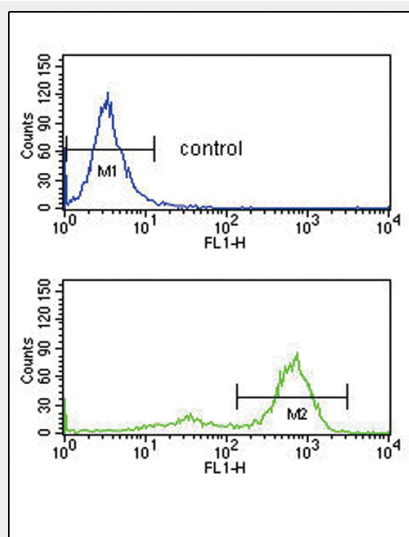
ETV6 Antibody (N-term) - Images



All lanes : Anti-ETV6 Antibody (N-term) at 1:2000 dilution Lane 1: U266B1 whole cell lysate Lane 2: U-2OS whole cell lysate Lane 3: Raji whole cell lysate Lane 4: Jurkat whole cell lysate Lysates/proteins at 20 µg per lane. Secondary Goat Anti-Rabbit IgG, (H+L), Peroxidase conjugated at 1/10000 dilution. Predicted band size : 53 kDa Blocking/Dilution buffer: 5% NFDM/TBST.



Formalin-fixed and paraffin-embedded human testis tissue reacted with ETV6 Antibody (N-term), which was peroxidase-conjugated to the secondary antibody, followed by DAB staining. This data demonstrates the use of this antibody for immunohistochemistry; clinical relevance has not been evaluated.



ETV6 Antibody (N-term) (Cat. #AP8917a) flow cytometry analysis of K562 cells (bottom histogram) compared to a negative control cell (top histogram). FITC-conjugated goat-anti-rabbit secondary antibodies were used for the analysis.

ETV6 Antibody (N-term) - Background

ETV6 is an ETS family transcription factor. This protein contains two functional domains: a N-terminal pointed (PNT) domain that is involved in protein-protein interactions with itself and other proteins, and a C-terminal DNA-binding domain.

ETV6 Antibody (N-term) - References

Buijs, A., et al., *Oncogene* 10 (8), 1511-1519 (1995)
Golub, T.R., et al., *Proc. Natl. Acad. Sci. U.S.A.* 92 (11), 4917-4921 (1995)