

ANGEL1 Antibody (C-term)
Affinity Purified Rabbit Polyclonal Antibody (Pab)
Catalog # AP8945b

Specification

ANGEL1 Antibody (C-term) - Product Information

Application	FC, IHC-P, WB,E
Primary Accession	O9UNK9
Reactivity	Human, Mouse
Host	Rabbit
Clonality	Polyclonal
Isotype	Rabbit IgG
Calculated MW	75276
Antigen Region	597-624

ANGEL1 Antibody (C-term) - Additional Information

Gene ID 23357

Other Names

Protein angel homolog 1, ANGEL1, KIAA0759

Target/Specificity

This ANGEL1 antibody is generated from rabbits immunized with a KLH conjugated synthetic peptide between 597-624 amino acids from the C-terminal region of human ANGEL1.

Dilution

FC~~1:10~50

IHC-P~~1:50~100

WB~~1:1000

E~~Use at an assay dependent concentration.

Format

Purified polyclonal antibody supplied in PBS with 0.09% (W/V) sodium azide. This antibody is purified through a protein A column, followed by peptide affinity purification.

Storage

Maintain refrigerated at 2-8°C for up to 2 weeks. For long term storage store at -20°C in small aliquots to prevent freeze-thaw cycles.

Precautions

ANGEL1 Antibody (C-term) is for research use only and not for use in diagnostic or therapeutic procedures.

ANGEL1 Antibody (C-term) - Protein Information

Name ANGEL1

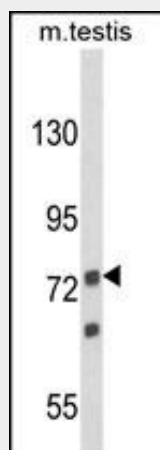
Synonyms KIAA0759

ANGEL1 Antibody (C-term) - Protocols

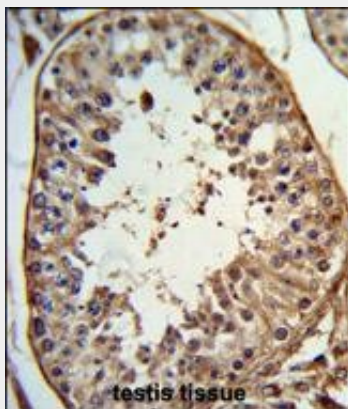
Provided below are standard protocols that you may find useful for product applications.

- [Western Blot](#)
- [Blocking Peptides](#)
- [Dot Blot](#)
- [Immunohistochemistry](#)
- [Immunofluorescence](#)
- [Immunoprecipitation](#)
- [Flow Cytometry](#)
- [Cell Culture](#)

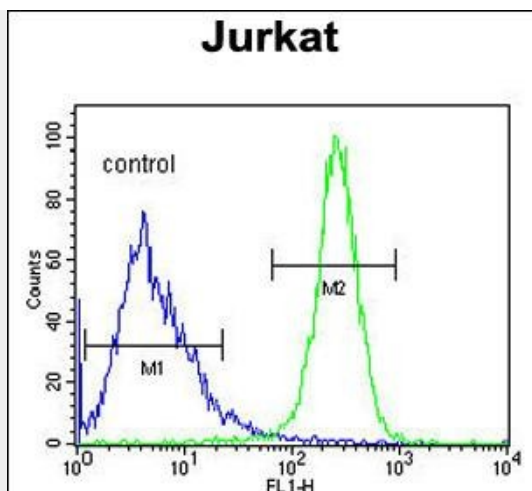
ANGEL1 Antibody (C-term) - Images



Western blot analysis of ANGEL1 Antibody (C-term) (Cat. #AP8945b) in mouse testis tissue lysates (35ug/lane). ANGEL1 (arrow) was detected using the purified Pab.



Formalin-fixed and paraffin-embedded human testis tissue reacted with ANGEL1 Antibody (C-term), which was peroxidase-conjugated to the secondary antibody, followed by DAB staining. This data demonstrates the use of this antibody for immunohistochemistry; clinical relevance has not been evaluated.



ANGEL1 Antibody (C-term) (Cat. #AP8945b) flow cytometric analysis of Jurkat cells (right histogram) compared to a negative control cell (left histogram). FITC-conjugated goat-anti-rabbit secondary antibodies were used for the analysis.

ANGEL1 Antibody (C-term) - References

Lipovich, L., et.al., Gene 286 (2), 203-213 (2002)