

CDC5L Antibody (Center)
Affinity Purified Rabbit Polyclonal Antibody (Pab)
Catalog # AP8949c**Specification**

CDC5L Antibody (Center) - Product Information

Application	FC, WB,E
Primary Accession	Q99459
Reactivity	Human
Host	Rabbit
Clonality	Polyclonal
Isotype	Rabbit IgG
Antigen Region	187-213

CDC5L Antibody (Center) - Additional Information**Gene ID** 988**Other Names**

Cell division cycle 5-like protein, Cdc5-like protein, Pombe cdc5-related protein, CDC5L, KIAA0432, PCDC5RP

Target/Specificity

This CDC5L antibody is generated from rabbits immunized with a KLH conjugated synthetic peptide between 187-213 amino acids from the Central region of human CDC5L.

Dilution

FC~~1:10~50

WB~~1:1000

E~~Use at an assay dependent concentration.

Format

Purified polyclonal antibody supplied in PBS with 0.09% (W/V) sodium azide. This antibody is purified through a protein A column, followed by peptide affinity purification.

Storage

Maintain refrigerated at 2-8°C for up to 2 weeks. For long term storage store at -20°C in small aliquots to prevent freeze-thaw cycles.

Precautions

CDC5L Antibody (Center) is for research use only and not for use in diagnostic or therapeutic procedures.

CDC5L Antibody (Center) - Protein Information**Name** CDC5L**Synonyms** KIAA0432, PCDC5RP

Function DNA-binding protein involved in cell cycle control. May act as a transcription activator. Plays a role in pre-mRNA splicing as core component of precatalytic, catalytic and postcatalytic spliceosomal complexes (PubMed:[11991638](#), PubMed:[20176811](#), PubMed:[28076346](#), PubMed:[28502770](#), PubMed:[29301961](#), PubMed:[29360106](#), PubMed:[29361316](#), PubMed:[30705154](#), PubMed:[30728453](#)). Component of the PRP19-CDC5L complex that forms an integral part of the spliceosome and is required for activating pre-mRNA splicing. The PRP19-CDC5L complex may also play a role in the response to DNA damage (DDR) (PubMed:[20176811](#)). As a component of the minor spliceosome, involved in the splicing of U12-type introns in pre-mRNAs (Probable).

Cellular Location

Nucleus. Nucleus speckle. Cytoplasm Note=May shuttle between cytoplasm and nucleus

Tissue Location

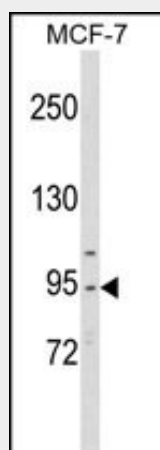
Ubiquitously expressed in both fetal and adult tissues.

CDC5L Antibody (Center) - Protocols

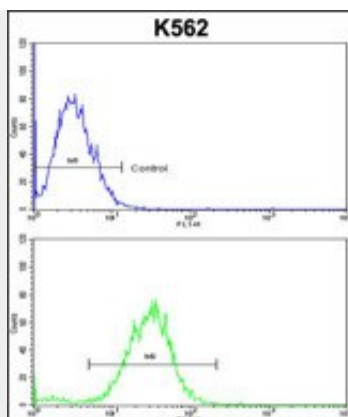
Provided below are standard protocols that you may find useful for product applications.

- [Western Blot](#)
- [Blocking Peptides](#)
- [Dot Blot](#)
- [Immunohistochemistry](#)
- [Immunofluorescence](#)
- [Immunoprecipitation](#)
- [Flow Cytometry](#)
- [Cell Culture](#)

CDC5L Antibody (Center) - Images



Western blot analysis of CDC5L Antibody (Center) (Cat. #AP8949c) in MCF-7 cell line lysates (35ug/lane). CDC5L (arrow) was detected using the purified Pab.



CDC5L Antibody (Center) (Cat. #AP8949c) flow cytometric analysis of k562 cells (bottom histogram) compared to a negative control cell (top histogram). FITC-conjugated goat-anti-rabbit secondary antibodies were used for the analysis.

CDC5L Antibody (Center) - Background

The protein is a significant similarity with *Schizosaccharomyces pombe* cdc5 gene product, which is a cell cycle regulator important for G2/M transition. This protein has been demonstrated to act as a positive regulator of cell cycle G2/M progression. It was also found to be an essential component of a non-snRNA spliceosome, which contains at least five additional protein factors and is required for the second catalytic step of pre-mRNA splicing.

CDC5L Antibody (Center) - References

Grillari, J., et.al., J. Biol. Chem. 284 (42), 29193-29204 (2009) Zhang, N., et.al., EMBO Rep. 10 (9), 1029-1035 (2009)

CDC5L Antibody (Center) - Citations

- [DNA methylation-regulated miR-193a-3p dictates resistance of hepatocellular carcinoma to 5-fluorouracil via repression of SRSF2 expression.](#)