

**PIN1 Antibody (Center)**  
**Affinity Purified Rabbit Polyclonal Antibody (Pab)**  
**Catalog # AP8959C**

**Specification**

---

**PIN1 Antibody (Center) - Product Information**

|                   |                        |
|-------------------|------------------------|
| Application       | IF, WB, FC, IHC-P,E    |
| Primary Accession | <a href="#">Q13526</a> |
| Other Accession   | <a href="#">Q4R383</a> |
| Reactivity        | Human                  |
| Predicted         | Monkey                 |
| Host              | Rabbit                 |
| Clonality         | Polyclonal             |
| Isotype           | Rabbit IgG             |
| Calculated MW     | 18243                  |
| Antigen Region    | 30-56                  |

**PIN1 Antibody (Center) - Additional Information**

**Gene ID** 5300

**Other Names**

Peptidyl-prolyl cis-trans isomerase NIMA-interacting 1, Peptidyl-prolyl cis-trans isomerase Pin1, PPIase Pin1, Rotamase Pin1, PIN1

**Target/Specificity**

This PIN1 antibody is generated from rabbits immunized with a KLH conjugated synthetic peptide between 30-56 amino acids from the Central region of human PIN1.

**Dilution**

IF~~1:10~50  
WB~~1:1000  
FC~~1:10~50  
IHC-P~~1:50~100  
E~~Use at an assay dependent concentration.

**Format**

Purified polyclonal antibody supplied in PBS with 0.09% (W/V) sodium azide. This antibody is purified through a protein A column, followed by peptide affinity purification.

**Storage**

Maintain refrigerated at 2-8°C for up to 2 weeks. For long term storage store at -20°C in small aliquots to prevent freeze-thaw cycles.

**Precautions**

PIN1 Antibody (Center) is for research use only and not for use in diagnostic or therapeutic procedures.

**PIN1 Antibody (Center) - Protein Information**

**Name** PIN1

**Function** Peptidyl-prolyl cis/trans isomerase (PPIase) that binds to and isomerizes specific phosphorylated Ser/Thr-Pro (pSer/Thr-Pro) motifs (PubMed:[21497122](#), PubMed:[23623683](#), PubMed:[29686383](#)). By inducing conformational changes in a subset of phosphorylated proteins, acts as a molecular switch in multiple cellular processes (PubMed:[21497122](#), PubMed:[22033920](#), PubMed:[23623683](#)). Displays a preference for acidic residues located N-terminally to the proline bond to be isomerized. Regulates mitosis presumably by interacting with NIMA and attenuating its mitosis-promoting activity. Down-regulates kinase activity of BTK (PubMed:[16644721](#)). Can transactivate multiple oncogenes and induce centrosome amplification, chromosome instability and cell transformation. Required for the efficient dephosphorylation and recycling of RAF1 after mitogen activation (PubMed:[15664191](#)). Binds and targets PML and BCL6 for degradation in a phosphorylation-dependent manner (PubMed:[17828269](#)). Acts as a regulator of JNK cascade by binding to phosphorylated FBXW7, disrupting FBXW7 dimerization and promoting FBXW7 autoubiquitination and degradation: degradation of FBXW7 leads to subsequent stabilization of JUN (PubMed:[22608923](#)). May facilitate the ubiquitination and proteasomal degradation of RBBP8/CtIP through CUL3/KLHL15 E3 ubiquitin-protein ligase complex, hence favors DNA double-strand repair through error-prone non-homologous end joining (NHEJ) over error-free, RBBP8-mediated homologous recombination (HR) (PubMed:[23623683](#), PubMed:[27561354](#)). Upon IL33-induced lung inflammation, catalyzes cis-trans isomerization of phosphorylated IRAK3/IRAK-M, inducing IRAK3 stabilization, nuclear translocation and expression of pro-inflammatory genes in dendritic cells (PubMed:[29686383](#)). Catalyzes cis-trans isomerization of phosphorylated phosphoglycerate kinase PGK1 under hypoxic conditions to promote its binding to the TOM complex and targeting to the mitochondrion (PubMed:[26942675](#)).

**Cellular Location**

Nucleus. Nucleus speckle. Cytoplasm Note=Colocalizes with NEK6 in the nucleus (PubMed:16476580). Mainly localized in the nucleus but phosphorylation at Ser-71 by DAPK1 results in inhibition of its nuclear localization (PubMed:21497122)

**Tissue Location**

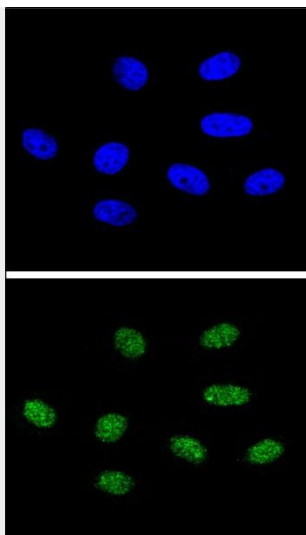
Expressed in immune cells in the lung (at protein level) (PubMed:29686383). The phosphorylated form at Ser-71 is expressed in normal breast tissue cells but not in breast cancer cells

**PIN1 Antibody (Center) - Protocols**

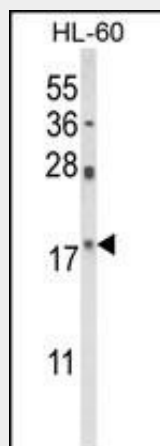
Provided below are standard protocols that you may find useful for product applications.

- [Western Blot](#)
- [Blocking Peptides](#)
- [Dot Blot](#)
- [Immunohistochemistry](#)
- [Immunofluorescence](#)
- [Immunoprecipitation](#)
- [Flow Cytometry](#)
- [Cell Culture](#)

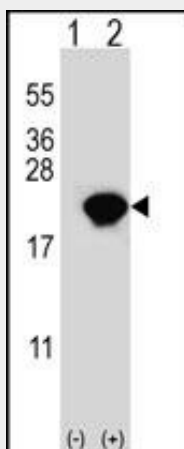
**PIN1 Antibody (Center) - Images**



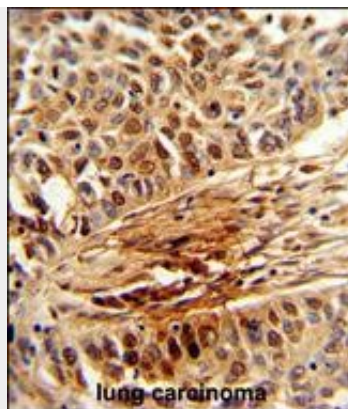
Confocal immunofluorescent analysis of PIN1 Antibody (Center) (Cat. #AP8959c) with 293 cell followed by Alexa Fluor® 488-conjugated goat anti-rabbit IgG (green). DAPI was used to stain the cell nuclear (blue).



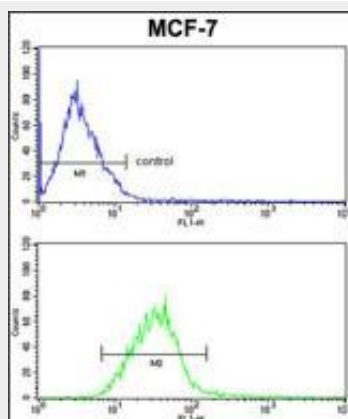
Western blot analysis of PIN1 Antibody (Center) (Cat. #AP8959c) in HL-60 cell line lysates (35ug/lane). PIN1 (arrow) was detected using the purified Pab.



Western blot analysis of PIN1 (arrow) using rabbit polyclonal PIN1 Antibody (Center) (Cat. #AP8959c). 293 cell lysates (2 ug/lane) either nontransfected (Lane 1) or transiently transfected (Lane 2) with the PIN1 gene.



Formalin-fixed and paraffin-embedded human lung carcinoma reacted with PIN1 Antibody (Center), which was peroxidase-conjugated to the secondary antibody, followed by DAB staining. This data demonstrates the use of this antibody for immunohistochemistry; clinical relevance has not been evaluated.



PIN1 Antibody (Center) (Cat.#AP8959c) FC analysis of MCF-7 cells (bottom histogram) compared to a negative control cell (top histogram). FITC-conjugated goat-anti-rabbit secondary antibodies were used for the analysis.

### **PIN1 Antibody (Center) - Background**

PIN1 is an essential nuclear peptidylprolyl cis-trans isomerase (PPIase; EC 5.2.1.8) involved in regulation of mitosis.

### **PIN1 Antibody (Center) - References**

Lu,K.P., et.al., Nature 380 (6574), 544-547 (1996) Campbell,H.D., et.al., Genomics 44 (2), 157-162 (1997)