

CDC37 Antibody (Center)
Affinity Purified Rabbit Polyclonal Antibody (Pab)
Catalog # AP8965C

Specification

CDC37 Antibody (Center) - Product Information

| | |
|-------------------|------------------------|
| Application | FC, IHC-P, WB,E |
| Primary Accession | Q16543 |
| Reactivity | Human, Rat |
| Host | Rabbit |
| Clonality | Polyclonal |
| Isotype | Rabbit IgG |
| Calculated MW | 44468 |
| Antigen Region | 116-144 |

CDC37 Antibody (Center) - Additional Information

Gene ID 11140

Other Names

Hsp90 co-chaperone Cdc37, Hsp90 chaperone protein kinase-targeting subunit, p50Cdc37, Hsp90 co-chaperone Cdc37, N-terminally processed, CDC37, CDC37A

Target/Specificity

This CDC37 antibody is generated from rabbits immunized with a KLH conjugated synthetic peptide between 116-144 amino acids from the Central region of human CDC37.

Dilution

FC~~1:10~50

IHC-P~~1:50~100

WB~~1:2000

E~~Use at an assay dependent concentration.

Format

Purified polyclonal antibody supplied in PBS with 0.09% (W/V) sodium azide. This antibody is purified through a protein A column, followed by peptide affinity purification.

Storage

Maintain refrigerated at 2-8°C for up to 2 weeks. For long term storage store at -20°C in small aliquots to prevent freeze-thaw cycles.

Precautions

CDC37 Antibody (Center) is for research use only and not for use in diagnostic or therapeutic procedures.

CDC37 Antibody (Center) - Protein Information

Name CDC37

Synonyms CDC37A

Function Co-chaperone that binds to numerous kinases and promotes their interaction with the Hsp90 complex, resulting in stabilization and promotion of their activity (PubMed:[8666233](#)). Inhibits HSP90AA1 ATPase activity (PubMed:[23569206](#)).

Cellular Location

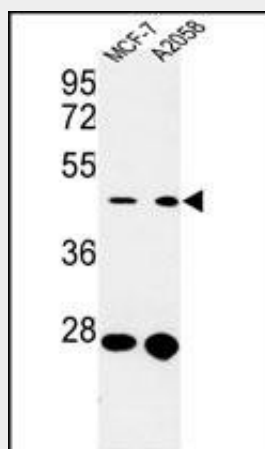
Cytoplasm.

CDC37 Antibody (Center) - Protocols

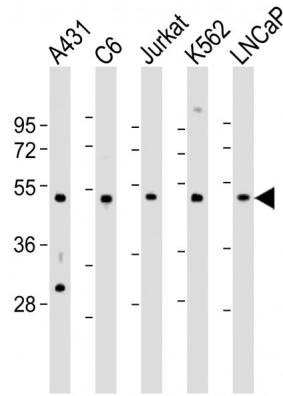
Provided below are standard protocols that you may find useful for product applications.

- [Western Blot](#)
- [Blocking Peptides](#)
- [Dot Blot](#)
- [Immunohistochemistry](#)
- [Immunofluorescence](#)
- [Immunoprecipitation](#)
- [Flow Cytometry](#)
- [Cell Culture](#)

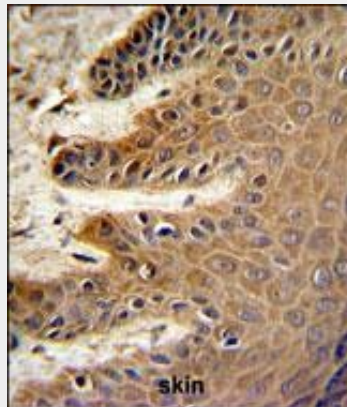
CDC37 Antibody (Center) - Images



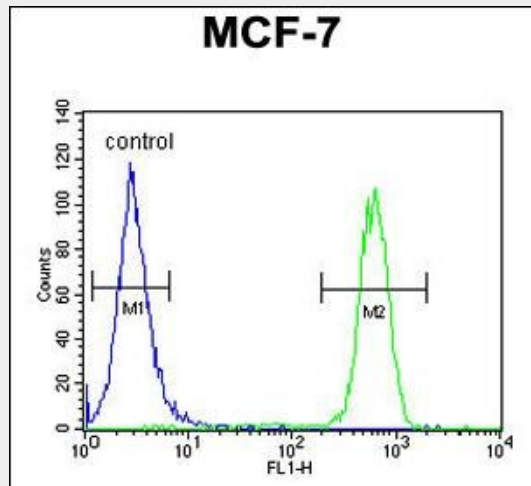
Western blot analysis of CDC37 Antibody (Center) (Cat. #AP8965c) in MCF-7, A2058 cell line lysates (35ug/lane). CDC37 (arrow) was detected using the purified Pab.



All lanes : Anti-CDC37 Antibody (Center) at 1:2000 dilution Lane 1: A431 whole cell lysate Lane 2: C6 whole cell lysate Lane 3: Jurkat whole cell lysate Lane 4: K562 whole cell lysate Lane 5: LNCaP whole cell lysate Lysates/proteins at 20 µg per lane. Secondary Goat Anti-Rabbit IgG, (H+L), Peroxidase conjugated at 1/10000 dilution. Predicted band size : 44 kDa Blocking/Dilution buffer: 5% NFDm/TBST.



CDC37 Antibody (Center) (Cat. #AP8965c) IHC analysis in formalin fixed and paraffin embedded skin followed by peroxidase conjugation of the secondary antibody and DAB staining. This data demonstrates the use of the CDC37 Antibody (Center) for immunohistochemistry. Clinical relevance has not been evaluated.



CDC37 Antibody (Center) (Cat. #AP8965c) flow cytometric analysis of MCF-7 cells (right histogram) compared to a negative control cell (left histogram). FITC-conjugated goat-anti-rabbit secondary antibodies were used for the analysis.

CDC37 Antibody (Center) - Background

CDC37 is a cell division cycle control protein of *Saccharomyces cerevisiae*. This protein is a molecular chaperone with specific function in cell signal transduction. It has been shown to form complex with Hsp90 and a variety of protein kinases including CDK4, CDK6, SRC, RAF-1, MOK, as well as eIF2 alpha kinases. It is thought to play a critical role in directing Hsp90 to its target kinases.

CDC37 Antibody (Center) - References

Dai, K., et al., *J. Biol. Chem.* 271 (36), 22030-22034 (1996)
Lamphere, L., et al., *Oncogene* 14 (16), 1999-2004 (1997)