

C14orf145 Antibody (Center)
Affinity Purified Rabbit Polyclonal Antibody (Pab)
Catalog # AP8980c

Specification

C14orf145 Antibody (Center) - Product Information

Application	FC, IHC-P, WB,E
Primary Accession	Q6ZU80
Reactivity	Human
Host	Rabbit
Clonality	Polyclonal
Isotype	Rabbit IgG
Calculated MW	128015
Antigen Region	906-935

C14orf145 Antibody (Center) - Additional Information

Gene ID 145508

Other Names

Centrosomal protein of 128 kDa, Cep128, CEP128, C14orf145, C14orf61

Target/Specificity

This C14orf145 antibody is generated from rabbits immunized with a KLH conjugated synthetic peptide between 906-935 amino acids from the Central region of human C14orf145.

Dilution

FC~~1:10~50

IHC-P~~1:50~100

WB~~1:1000

E~~Use at an assay dependent concentration.

Format

Purified polyclonal antibody supplied in PBS with 0.09% (W/V) sodium azide. This antibody is purified through a protein A column, followed by peptide affinity purification.

Storage

Maintain refrigerated at 2-8°C for up to 2 weeks. For long term storage store at -20°C in small aliquots to prevent freeze-thaw cycles.

Precautions

C14orf145 Antibody (Center) is for research use only and not for use in diagnostic or therapeutic procedures.

C14orf145 Antibody (Center) - Protein Information

Name CEP128

Synonyms C14orf145, C14orf61

Cellular Location

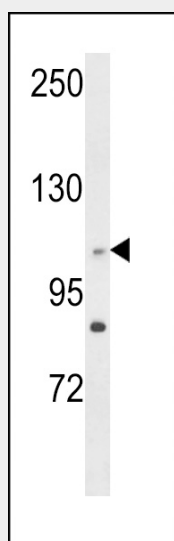
Cytoplasm, cytoskeleton, microtubule organizing center, centrosome. Cytoplasm, cytoskeleton, microtubule organizing center, centrosome, centriole. Cytoplasm, cytoskeleton, spindle pole.
Note=Associates with the mother centriole

C14orf145 Antibody (Center) - Protocols

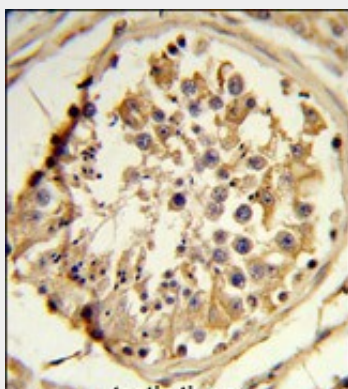
Provided below are standard protocols that you may find useful for product applications.

- [Western Blot](#)
- [Blocking Peptides](#)
- [Dot Blot](#)
- [Immunohistochemistry](#)
- [Immunofluorescence](#)
- [Immunoprecipitation](#)
- [Flow Cytometry](#)
- [Cell Culture](#)

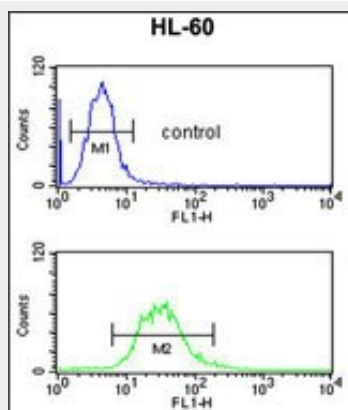
C14orf145 Antibody (Center) - Images



Western blot analysis of C14orf145 Antibody (Center) (Cat. #AP8980c) in HL-60 cell line lysates (35ug/lane). C14orf145 (arrow) was detected using the purified Pab.



Formalin-fixed and paraffin-embedded human testis reacted with C14orf145 Antibody (Center), which was peroxidase-conjugated to the secondary antibody, followed by DAB staining. This data demonstrates the use of this antibody for immunohistochemistry; clinical relevance has not been evaluated.



C14orf145 Antibody (Center) (Cat. #AP8980c) flow cytometric analysis of HL-60 cells (bottom histogram) compared to a negative control cell (top histogram). FITC-conjugated goat-anti-rabbit secondary antibodies were used for the analysis.

C14orf145 Antibody (Center) - References

Matsuoka, S., et al., Science 316 (5828), 1160-1166 (2007)