

**DAB1 Antibody (Center)**  
**Affinity Purified Rabbit Polyclonal Antibody (Pab)**  
**Catalog # AP8986c**

**Specification**

---

**DAB1 Antibody (Center) - Product Information**

Application	IHC-P, WB,E
Primary Accession	<a href="#">O75553</a>
Other Accession	<a href="#">O8CJH2</a> , <a href="#">P97318</a> , <a href="#">Q9BGX5</a>
Reactivity	Human, Mouse
Predicted	Monkey, Rat
Host	Rabbit
Clonality	Polyclonal
Isotype	Rabbit IgG
Calculated MW	63775
Antigen Region	189-216

**DAB1 Antibody (Center) - Additional Information**

**Gene ID** 1600

**Other Names**

Disabled homolog 1, DAB1

**Target/Specificity**

This DAB1 antibody is generated from rabbits immunized with a KLH conjugated synthetic peptide between 189-216 amino acids from the Central region of human DAB1.

**Dilution**

IHC-P~~1:50~100

WB~~1:1000

E~~Use at an assay dependent concentration.

**Format**

Purified polyclonal antibody supplied in PBS with 0.09% (W/V) sodium azide. This antibody is purified through a protein A column, followed by peptide affinity purification.

**Storage**

Maintain refrigerated at 2-8°C for up to 2 weeks. For long term storage store at -20°C in small aliquots to prevent freeze-thaw cycles.

**Precautions**

DAB1 Antibody (Center) is for research use only and not for use in diagnostic or therapeutic procedures.

**DAB1 Antibody (Center) - Protein Information**

**Name** DAB1

**Function** Signaling adapter of the reelin-mediated signaling pathway, which regulates the migration and differentiation of postmitotic neurons during brain development. Mediates intracellular transduction of Reelin signaling following reelin (RELN)-binding to its receptor: acts by docking proteins through its phosphotyrosine residues and PID domain.

**Cellular Location**

Cytoplasm {ECO:0000250|UniProtKB:P97318}.

**Tissue Location**

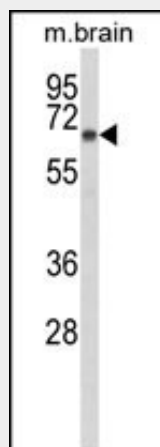
Mainly expressed in brain.

**DAB1 Antibody (Center) - Protocols**

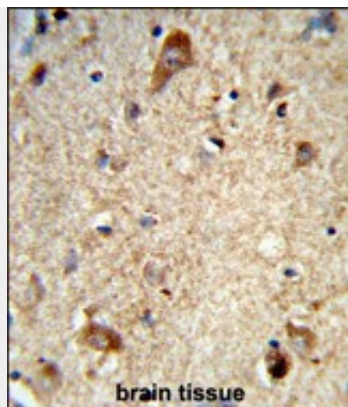
Provided below are standard protocols that you may find useful for product applications.

- [Western Blot](#)
- [Blocking Peptides](#)
- [Dot Blot](#)
- [Immunohistochemistry](#)
- [Immunofluorescence](#)
- [Immunoprecipitation](#)
- [Flow Cytometry](#)
- [Cell Culture](#)

**DAB1 Antibody (Center) - Images**



Western blot analysis of DAB1 Antibody (Center) (Cat. #AP8986c) in mouse brain tissue lysates (35ug/lane). DAB1 (arrow) was detected using the purified Pab.



Formalin-fixed and paraffin-embedded human brain tissue reacted with DAB1 Antibody (Center), which was peroxidase-conjugated to the secondary antibody, followed by DAB staining. This data demonstrates the use of this antibody for immunohistochemistry; clinical relevance has not been evaluated.

#### **DAB1 Antibody (Center) - Background**

DAB1 is adapter molecule functioning in neural development. It may regulate SIAH1 activity (By similarity).

#### **DAB1 Antibody (Center) - References**

Ranganathan S., et.al., J. Biol. Chem. 279:40536-40544(2004).