

**GFP-Tag Mouse Monoclonal Antibody**  
**Mouse mAb**  
**Catalog # AP90005****Specification**

---

**GFP-Tag Mouse Monoclonal Antibody - Product Information**

Application	WB, IHC, ICC, IP
Primary Accession	<a href="#">P42212</a>
Reactivity	All Species
Clonality	Monoclonal
<b>Other Names</b>	
GFP ; yfp ; Green fluorescent protein ;	
Isotype	Mouse IgG1
Host	Mouse
Calculated MW	26886 Da

**GFP-Tag Mouse Monoclonal Antibody - Additional Information**

Dilution	WB~~1:1000 IHC~~1:100~500 ICC~~N/A IP~~N/A
Purification	Affinity-chromatography
Immunogen	Full-length GFP protein
Description	Green fluorescent protein(GFP) has been engineered to produce a vast number of variously colored mutants, fusion proteins, and biosensors. Fluorescent proteins and its mutated allelic forms, blue, cyan and yellow have become a useful and ubiquitous tool for making chimeric proteins, where they function as a fluorescent protein tag. Typically they tolerate N- and C-terminal fusion to a broad variety of proteins.
Storage Condition and Buffer	Mouse IgG in phosphate buffered saline , pH 7.4, 150mM NaCl, 0.02% sodium azide and 50% glycerol. Store at +4°C short term. Store at -20°C long term. Avoid freeze / thaw cycle.

**GFP-Tag Mouse Monoclonal Antibody - Protein Information****Name** GFP**Function**

Energy-transfer acceptor. Its role is to transduce the blue chemiluminescence of the protein aequorin into green fluorescent light by energy transfer. Fluoresces in vivo upon receiving energy

from the Ca(2+)-activated photoprotein aequorin.

#### **Tissue Location**

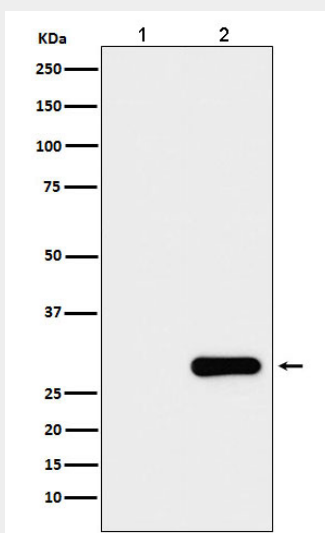
Photocytes.

#### **GFP-Tag Mouse Monoclonal Antibody - Protocols**

Provided below are standard protocols that you may find useful for product applications.

- [Western Blot](#)
- [Blocking Peptides](#)
- [Dot Blot](#)
- [Immunohistochemistry](#)
- [Immunofluorescence](#)
- [Immunoprecipitation](#)
- [Flow Cytometry](#)
- [Cell Culture](#)

#### **GFP-Tag Mouse Monoclonal Antibody - Images**



Western blot analysis of GFP protein expression in (1) 293T cell lysate; (2) 293T cell transfected with GFP protein lysate.