

**beta Tubulin Mouse Monoclonal Antibody**  
**Mouse mAb**  
**Catalog # AP90009****Specification**

---

**beta Tubulin Mouse Monoclonal Antibody - Product Information**

Application	WB, IHC, ICC
Primary Accession	<a href="#">P07437</a>
Reactivity	Rat, Dog
Clonality	Monoclonal
<b>Other Names</b>	
Beta 4 tubulin; Beta 5 tubulin; Beta1 tubulin; Tubulin beta chain; Tubulin beta class I;	
Isotype	Mouse IgG1
Host	Mouse
Calculated MW	49671 Da

**beta Tubulin Mouse Monoclonal Antibody - Additional Information**

Dilution	WB~~1:1000 IHC~~1:100~500 ICC~~N/A
Purification	Affinity-chromatography
Immunogen	A synthesized peptide derived from human beta Tubulin
Description	Tubulin is the major constituent of microtubules. It binds two moles of GTP, one at an exchangeable site on the beta chain and one at a non-exchangeable site on the alpha-chain.
Storage Condition and Buffer	Mouse IgG in phosphate buffered saline , pH 7.4, 150mM NaCl, 0.02% sodium azide and 50% glycerol. Store at +4°C short term. Store at -20°C long term. Avoid freeze / thaw cycle.

**beta Tubulin Mouse Monoclonal Antibody - Protein Information****Name** TUBB**Synonyms** TUBB5**Function**

Tubulin is the major constituent of microtubules, a cylinder consisting of laterally associated linear protofilaments composed of alpha- and beta-tubulin heterodimers. Microtubules grow by the addition of GTP-tubulin dimers to the microtubule end, where a stabilizing cap forms. Below the cap, tubulin dimers are in GDP-bound state, owing to GTPase activity of alpha-tubulin.

**Cellular Location**

Cytoplasm, cytoskeleton

#### **Tissue Location**

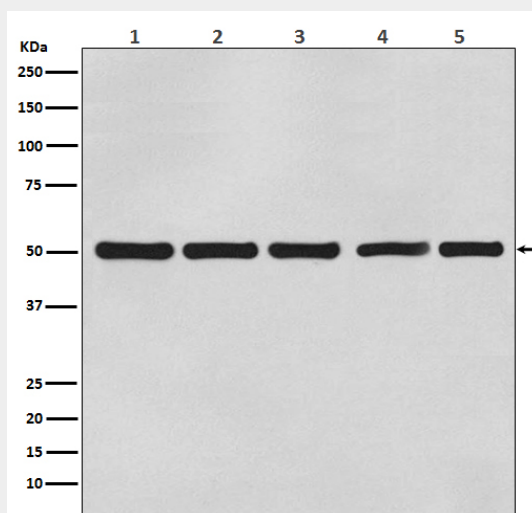
Ubiquitously expressed with highest levels in spleen, thymus and immature brain.

#### **beta Tubulin Mouse Monoclonal Antibody - Protocols**

Provided below are standard protocols that you may find useful for product applications.

- [Western Blot](#)
- [Blocking Peptides](#)
- [Dot Blot](#)
- [Immunohistochemistry](#)
- [Immunofluorescence](#)
- [Immunoprecipitation](#)
- [Flow Cytometry](#)
- [Cell Culture](#)

#### **beta Tubulin Mouse Monoclonal Antibody - Images**



Western blot analysis of beta Actin expression in (1) A431 cell lysate; (2) Rat brain lysate; (3) Mouse kidney lysate; (4) Chicken lung lysate; (5) Hamster spleen lysate with beta Tubulin Mouse Monoclonal Antibody.