

DPP10 Antibody (Center)
Affinity Purified Rabbit Polyclonal Antibody (Pab)
Catalog # AP9000c

Specification

DPP10 Antibody (Center) - Product Information

Application	IHC-P, WB,E
Primary Accession	Q8N608
Reactivity	Human, Mouse
Host	Rabbit
Clonality	Polyclonal
Isotype	Rabbit IgG
Antigen Region	150-177

DPP10 Antibody (Center) - Additional Information

Gene ID 57628

Other Names

Inactive dipeptidyl peptidase 10, Dipeptidyl peptidase IV-related protein 3, DPRP-3, Dipeptidyl peptidase X, DPP X, Dipeptidyl peptidase-like protein 2, DPL2, DPP10, DPRP3, KIAA1492

Target/Specificity

This DPP10 antibody is generated from rabbits immunized with a KLH conjugated synthetic peptide between 150-177 amino acids from the Central region of human DPP10.

Dilution

IHC-P~~1:50~100

WB~~1:1000

E~~Use at an assay dependent concentration.

Format

Purified polyclonal antibody supplied in PBS with 0.09% (W/V) sodium azide. This antibody is purified through a protein A column, followed by peptide affinity purification.

Storage

Maintain refrigerated at 2-8°C for up to 2 weeks. For long term storage store at -20°C in small aliquots to prevent freeze-thaw cycles.

Precautions

DPP10 Antibody (Center) is for research use only and not for use in diagnostic or therapeutic procedures.

DPP10 Antibody (Center) - Protein Information

Name DPP10

Synonyms DPRP3, KIAA1492

Function Promotes cell surface expression of the potassium channel KCND2 (PubMed:[15454437](#)). Modulates the activity and gating characteristics of the potassium channel KCND2 (PubMed:[15454437](#)). Has no dipeptidyl aminopeptidase activity (PubMed:[12662155](#)).

Cellular Location

Cell membrane {ECO:0000250|UniProtKB:Q6NXX7, ECO:0000269|PubMed:14566338}; Single-pass type II membrane protein {ECO:0000250|UniProtKB:P42658}

Tissue Location

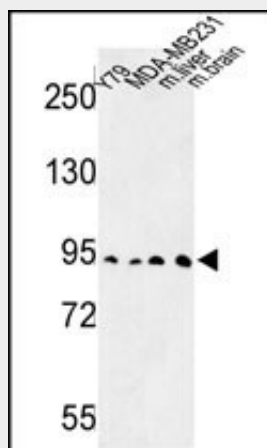
Found in serum, T-cells and brain (at protein level). Expressed in brain, pancreas, spinal cord and adrenal glands

DPP10 Antibody (Center) - Protocols

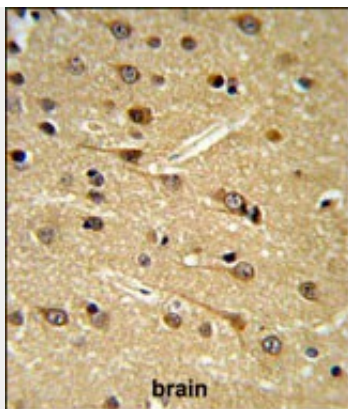
Provided below are standard protocols that you may find useful for product applications.

- [Western Blot](#)
- [Blocking Peptides](#)
- [Dot Blot](#)
- [Immunohistochemistry](#)
- [Immunofluorescence](#)
- [Immunoprecipitation](#)
- [Flow Cytometry](#)
- [Cell Culture](#)

DPP10 Antibody (Center) - Images



Western blot analysis of DPP10 Antibody (Center) (Cat. #AP9000c) in Y79, MDA-MB231 cell line and mouse liver, brain tissue lysates (35ug/lane). DPP10 (arrow) was detected using the purified Pab.



DPP10 Antibody (Center) (Cat. #AP9000c) IHC analysis in formalin fixed and paraffin embedded human brain tissue followed by peroxidase conjugation of the secondary antibody and DAB staining. This data demonstrates the use of the DPP10 Antibody (Center) for immunohistochemistry. Clinical relevance has not been evaluated.

DPP10 Antibody (Center) - Background

DPP10 is a single-pass type II membrane protein that is a member of the S9B family in clan SC of the serine proteases. This protein has no detectable protease activity, most likely due to the absence of the conserved serine residue normally present in the catalytic domain of serine proteases. However, it does bind specific voltage-gated potassium channels and alters their expression and biophysical properties.

DPP10 Antibody (Center) - References

Blakey J.D., et.al., Thorax 64:381-387(2009).