

**Actin Antibody**  
**Rabbit mAb**  
**Catalog # AP90015****Specification**

---

**Actin Antibody - Product Information**

Application	WB, IHC, ICC, IP
Primary Accession	<a href="#">P68133</a>
Reactivity	Rat
Clonality	Monoclonal

**Other Names**

a actin; ACTA; ACTA1; Actin alpha skeletal muscle; Actin; actina; actine; aktin; Alpha Actin 1; Alpha skeletal muscle Actin; ASMA; CFTD; CFTD1; CFTDM; MPFD; NEM1; NEM2; NEM3; nemaline myopathy type 3;

Isotype	Rabbit IgG
Host	Rabbit
Calculated MW	42051 Da

**Actin Antibody - Additional Information**

Dilution	WB~~1:1000 IHC~~1:100~500 ICC~~N/A IP~~N/A
Purification	Affinity-chromatography
Immunogen	A synthesized peptide derived from human Actin
Description	Actins are highly conserved proteins that are involved in various types of cell motility and are ubiquitously expressed in all eukaryotic cells.
Storage Condition and Buffer	Rabbit IgG in phosphate buffered saline , pH 7.4, 150mM NaCl, 0.02% sodium azide and 50% glycerol. Store at +4°C short term. Store at -20°C long term. Avoid freeze / thaw cycle.

**Actin Antibody - Protein Information****Name** ACTA1**Synonyms** ACTA**Function**

Actins are highly conserved proteins that are involved in various types of cell motility and are ubiquitously expressed in all eukaryotic cells.

**Cellular Location**

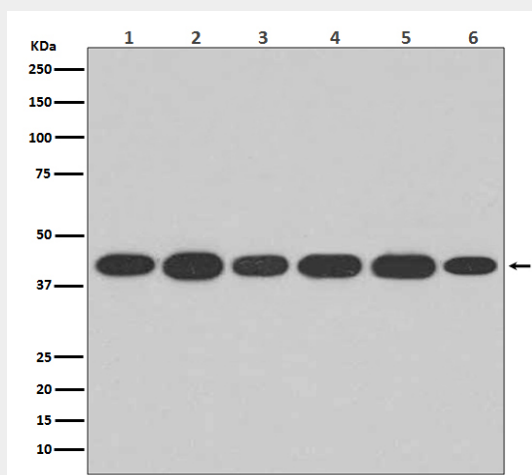
Cytoplasm, cytoskeleton.

### Actin Antibody - Protocols

Provided below are standard protocols that you may find useful for product applications.

- [Western Blot](#)
- [Blocking Peptides](#)
- [Dot Blot](#)
- [Immunohistochemistry](#)
- [Immunofluorescence](#)
- [Immunoprecipitation](#)
- [Flow Cytometry](#)
- [Cell Culture](#)

### Actin Antibody - Images



Western blot analysis of Actin expression in (1) Hela cell lysate; (2) Human fetal kidney lysate; (3) 3T3 cell lysate; (4) Mouse spleen lysate; (5) PC-12 cell lysate; (6) Rat heart lysate.