

GFP Antibody
Rabbit mAb
Catalog # AP90026**Specification**

GFP Antibody - Product Information

Application	WB, IHC, ICC
Primary Accession	P42212
Reactivity	Rat
Clonality	Monoclonal
Other Names	
GFP ; yfp ; Green fluorescent protein ;	
Isotype	Rabbit IgG
Host	Rabbit
Calculated MW	26886 Da

GFP Antibody - Additional Information

Dilution	WB~~1:1000 IHC~~1:100~500 ICC~~N/A
Purification	Affinity-chromatography
Immunogen	A synthesized peptide derived from green fluorescent protein
Description	Green fluorescent protein(GFP) has been engineered to produce a vast number of variously colored mutants, fusion proteins, and biosensors. Fluorescent proteins and its mutated allelic forms, blue, cyan and yellow have become a useful and ubiquitous tool for making chimeric proteins, where they function as a fluorescent protein tag. Typically they tolerate N- and C-terminal fusion to a broad variety of proteins.
Storage Condition and Buffer	Rabbit IgG in phosphate buffered saline , pH 7.4, 150mM NaCl, 0.02% sodium azide and 50% glycerol. Store at +4°C short term. Store at -20°C long term. Avoid freeze / thaw cycle.

GFP Antibody - Protein Information**Name** GFP**Function**

Energy-transfer acceptor. Its role is to transduce the blue chemiluminescence of the protein aequorin into green fluorescent light by energy transfer. Fluoresces in vivo upon receiving energy

from the Ca(2+)-activated photoprotein aequorin.

Tissue Location

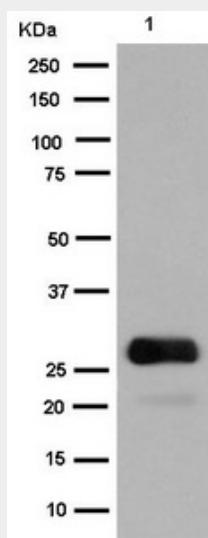
Photocytes.

GFP Antibody - Protocols

Provided below are standard protocols that you may find useful for product applications.

- [Western Blot](#)
- [Blocking Peptides](#)
- [Dot Blot](#)
- [Immunohistochemistry](#)
- [Immunofluorescence](#)
- [Immunoprecipitation](#)
- [Flow Cytometry](#)
- [Cell Culture](#)

GFP Antibody - Images



Western blot analysis of GFP expression in 293 cell lysate transfected with GFP.