

alpha Tubulin Antibody
Rabbit mAb
Catalog # AP90029

Specification

alpha Tubulin Antibody - Product Information

Application	WB, IHC, FC, ICC, IP
Primary Accession	P68366
Reactivity	Rat
Clonality	Monoclonal
Other Names	
Alpha-tubulin 1; TUBA1; TUBA1A ; Tubulin alpha 1 chain; Tubulin alpha	
Isotype	Rabbit IgG
Host	Rabbit
Calculated MW	49924 Da

alpha Tubulin Antibody - Additional Information

Dilution	WB~~1:1000 IHC~~1:100~500 FC~~1:10~50 ICC~~N/A IP~~N/A
Purification	Affinity-chromatography
Immunogen	A synthesized peptide derived from human alpha Tubulin
Description	TUBA1A Tubulin is the major constituent of microtubules. It binds two moles of GTP, one at an exchangeable site on the beta chain and one at a non-exchangeable site on the alpha-chain.
Storage Condition and Buffer	Rabbit IgG in phosphate buffered saline , pH 7.4, 150mM NaCl, 0.02% sodium azide and 50% glycerol. Store at +4°C short term. Store at -20°C long term. Avoid freeze / thaw cycle.

alpha Tubulin Antibody - Protein Information

Name TUBA4A

Synonyms TUBA1

Function

Tubulin is the major constituent of microtubules, a cylinder consisting of laterally associated linear protofilaments composed of alpha- and beta-tubulin heterodimers. Microtubules grow by the addition of GTP-tubulin dimers to the microtubule end, where a stabilizing cap forms. Below the cap, tubulin dimers are in GDP-bound state, owing to GTPase activity of alpha-tubulin.

Cellular Location

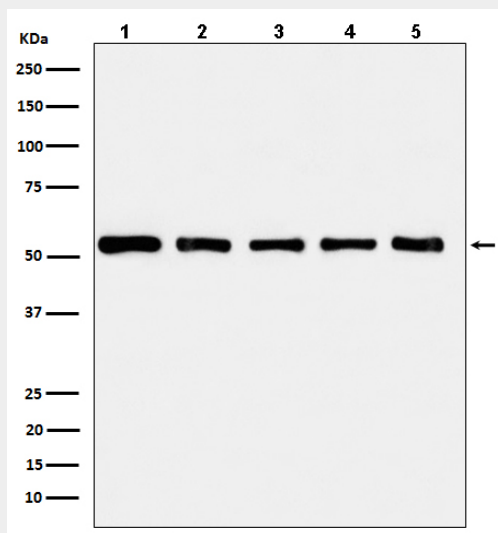
Cytoplasm, cytoskeleton.

alpha Tubulin Antibody - Protocols

Provided below are standard protocols that you may find useful for product applications.

- [Western Blot](#)
- [Blocking Peptides](#)
- [Dot Blot](#)
- [Immunohistochemistry](#)
- [Immunofluorescence](#)
- [Immunoprecipitation](#)
- [Flow Cytometry](#)
- [Cell Culture](#)

alpha Tubulin Antibody - Images



Western blot analysis of alpha Tubulin in (1) HeLa cell lysate; (2) HepG2 cell lysate; (3) NIH/3T3 cell lysate; (4) Mouse brain lysate; (5) C6 cell lysate.