

EDIL3 Antibody (Center)
Affinity Purified Rabbit Polyclonal Antibody (Pab)
Catalog # AP9005c**Specification**

EDIL3 Antibody (Center) - Product Information

Application	WB, IHC-P, FC,E
Primary Accession	O43854
Other Accession	O35474
Reactivity	Human, Rat
Predicted	Mouse
Host	Rabbit
Clonality	Polyclonal
Isotype	Rabbit IgG
Antigen Region	337-365

EDIL3 Antibody (Center) - Additional Information**Gene ID** 10085**Other Names**

EGF-like repeat and discoidin I-like domain-containing protein 3, Developmentally-regulated endothelial cell locus 1 protein, Integrin-binding protein DEL1, EDIL3, DEL1

Target/Specificity

This EDIL3 antibody is generated from rabbits immunized with a KLH conjugated synthetic peptide between 337-365 amino acids from the Central region of human EDIL3.

Dilution

WB~~1:1000
IHC-P~~1:50~100
FC~~1:10~50

Format

Purified polyclonal antibody supplied in PBS with 0.09% (W/V) sodium azide. This antibody is purified through a protein A column, followed by peptide affinity purification.

Storage

Maintain refrigerated at 2-8°C for up to 2 weeks. For long term storage store at -20°C in small aliquots to prevent freeze-thaw cycles.

Precautions

EDIL3 Antibody (Center) is for research use only and not for use in diagnostic or therapeutic procedures.

EDIL3 Antibody (Center) - Protein Information**Name** EDIL3

Synonyms DEL1

Function Promotes adhesion of endothelial cells through interaction with the alpha-v/beta-3 integrin receptor. Inhibits formation of vascular-like structures. May be involved in regulation of vascular morphogenesis of remodeling in embryonic development.

Cellular Location

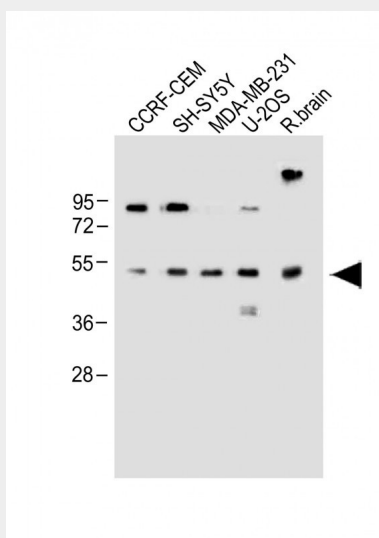
Secreted.

EDIL3 Antibody (Center) - Protocols

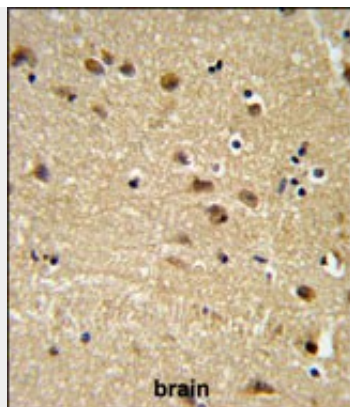
Provided below are standard protocols that you may find useful for product applications.

- [Western Blot](#)
- [Blocking Peptides](#)
- [Dot Blot](#)
- [Immunohistochemistry](#)
- [Immunofluorescence](#)
- [Immunoprecipitation](#)
- [Flow Cytometry](#)
- [Cell Culture](#)

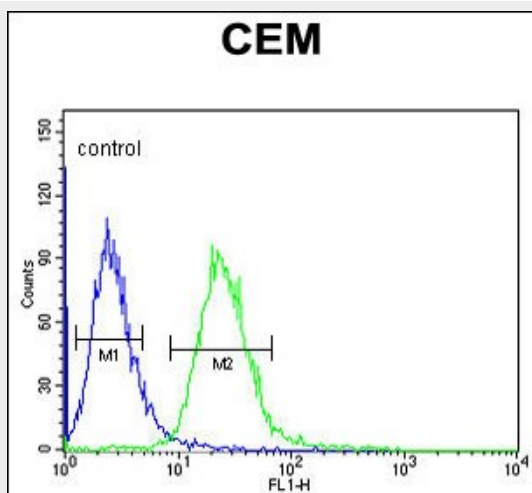
EDIL3 Antibody (Center) - Images



All lanes : Anti-EDIL3 Antibody (Center) at 1:1000 dilution Lane 1: CCRF-CEM whole cell lysate Lane 2: SH-SY5Y whole cell lysate Lane 3: MDA-MB-231 whole cell lysate Lane 4: U-2OS whole cell lysate Lane 5: Rat brain whole lysate Lysates/proteins at 20 µg per lane. Secondary Goat Anti-Rabbit IgG, (H+L), Peroxidase conjugated at 1/10000 dilution. Predicted band size : 54 kDa Blocking/Dilution buffer: 5% NFDM/TBST.



EDIL3 Antibody (Center)(Cat. #AP9005c) IHC analysis in formalin fixed and paraffin embedded human brain tissue followed by peroxidase conjugation of the secondary antibody and DAB staining. This data demonstrates the use of the EDIL3 Antibody (Center) for immunohistochemistry. Clinical relevance has not been evaluated.



EDIL3 Antibody (Center) (Cat. #AP9005c) flow cytometric analysis of CEM cells (right histogram) compared to a negative control cell (left histogram).FITC-conjugated goat-anti-rabbit secondary antibodies were used for the analysis.

EDIL3 Antibody (Center) - Background

EDIL3 is an integrin ligand. It plays an important role in mediating angiogenesis and may be important in vessel wall remodeling and development. It also influences endothelial cell behavior.

EDIL3 Antibody (Center) - References

Aoka,Y., et.al., Microvasc. Res. 64 (1), 148-161 (2002)