

alpha smooth muscle Actin Antibody
Rabbit mAb
Catalog # AP90063**Specification**

alpha smooth muscle Actin Antibody - Product Information

Application	WB, IHC, FC, ICC
Primary Accession	P62736
Reactivity	Rat
Clonality	Monoclonal

Other Names

Actin, aortic smooth muscle, Alpha-actin-2, Cell growth-inhibiting gene 46 protein, ACTA2, ACTSA, ACTVS, GIG46

Isotype	Rabbit IgG
Host	Rabbit
Calculated MW	42009 Da

alpha smooth muscle Actin Antibody - Additional Information

Dilution	WB~~1:1000 IHC~~1:100~500 FC~~1:10~50 ICC~~N/A
Purification	Affinity-chromatography
Immunogen	A synthesized peptide derived from human alpha smooth muscle Actin
Description	Involved in the interaction of plaque proteins and intermediate filaments mediating cell-cell adhesion. Defects in ACTA2 are the cause of aortic aneurysm familial thoracic type 6 (AAT6) [MIM:611788]. They are primarily associated with a characteristic histologic appearance known as 'medial necrosis' or 'Erdheim cystic medial necrosis' in which there is degeneration and fragmentation of elastic fibers, loss of smooth muscle cells, and an accumulation of basophilic ground substance.
Storage Condition and Buffer	Rabbit IgG in phosphate buffered saline , pH 7.4, 150mM NaCl, 0.02% sodium azide and 50% glycerol. Store at +4°C short term. Store at -20°C long term. Avoid freeze / thaw cycle.

alpha smooth muscle Actin Antibody - Protein Information**Name** ACTA2

Synonyms ACTSA, ACTVS

Function

Actins are highly conserved proteins that are involved in various types of cell motility and are ubiquitously expressed in all eukaryotic cells.

Cellular Location

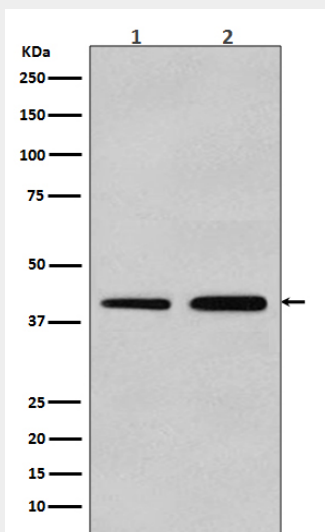
Cytoplasm, cytoskeleton.

alpha smooth muscle Actin Antibody - Protocols

Provided below are standard protocols that you may find useful for product applications.

- [Western Blot](#)
- [Blocking Peptides](#)
- [Dot Blot](#)
- [Immunohistochemistry](#)
- [Immunofluorescence](#)
- [Immunoprecipitation](#)
- [Flow Cytometry](#)
- [Cell Culture](#)

alpha smooth muscle Actin Antibody - Images



Western blot analysis of alpha smooth muscle Actin expression in (1)A549 cell lysate; (2)C2C12 cell lysate using alpha-SMA antibody.