

MKLP1 Antibody
Rabbit mAb
Catalog # AP90070**Specification**

MKLP1 Antibody - Product Information

Application	WB, ICC
Primary Accession	Q02241
Reactivity	Rat
Clonality	Monoclonal
Other Names	
CHO 1;CHO1;KIF 23;KIF23;;KNS L5;KNSL 5;KNSL5;Mitotic kinesin like 1;Mitotic kinesin like protein 1;MKLP 1;	
Isotype	Rabbit IgG
Host	Rabbit
Calculated MW	110059 Da

MKLP1 Antibody - Additional Information

Dilution	WB~~1:1000 ICC~~N/A
Purification	Affinity-chromatography
Immunogen	A synthesized peptide derived from human MKLP1
Description	Plus-end-directed motor enzyme that moves antiparallel microtubules in vitro. Localizes to the interzone of mitotic spindles.
Storage Condition and Buffer	Rabbit IgG in phosphate buffered saline , pH 7.4, 150mM NaCl, 0.02% sodium azide and 50% glycerol. Store at +4°C short term. Store at -20°C long term. Avoid freeze / thaw cycle.

MKLP1 Antibody - Protein Information**Name** KIF23**Synonyms** KNSL5, MKLP1**Function**

Component of the centralspindlin complex that serves as a microtubule-dependent and Rho-mediated signaling required for the myosin contractile ring formation during the cell cycle cytokinesis. Essential for cytokinesis in Rho-mediated signaling. Required for the localization of ECT2 to the central spindle. Plus-end-directed motor enzyme that moves antiparallel microtubules in vitro.

Cellular Location

Nucleus. Cytoplasm, cytoskeleton, spindle. Midbody, Midbody ring. Note=Localizes to the interzone of mitotic spindles. Detected at the midbody during later stages of mitotic cytokinesis

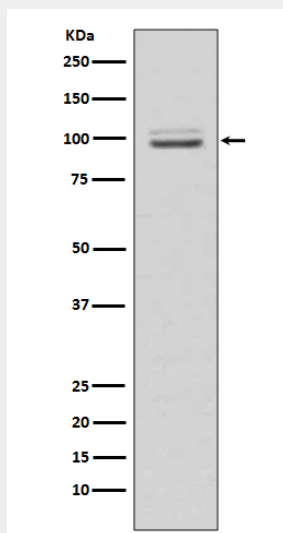
Tissue Location

Widely expressed..

MKLP1 Antibody - Protocols

Provided below are standard protocols that you may find useful for product applications.

- [Western Blot](#)
- [Blocking Peptides](#)
- [Dot Blot](#)
- [Immunohistochemistry](#)
- [Immunofluorescence](#)
- [Immunoprecipitation](#)
- [Flow Cytometry](#)
- [Cell Culture](#)

MKLP1 Antibody - Images

Western blot analysis of MKLP1 expression in HeLa cell lysate.