

**RNF20 Antibody**  
**Rabbit mAb**  
**Catalog # AP90076**

## Specification

---

### RNF20 Antibody - Product Information

Application	WB, FC, ICC, IP
Primary Accession	<a href="#">Q5VTR2</a>
Clonality	Monoclonal
<b>Other Names</b>	
BRE1-A; hBRE1; RING finger protein 20; E3 ubiquitin-protein ligase BRE1A; RNF20;	
Isotype	Rabbit IgG
Host	Rabbit
Calculated MW	113662 Da

### RNF20 Antibody - Additional Information

Dilution	WB~~1:1000 FC~~1:10~50 ICC~~N/A IP~~N/A
Purification	Affinity-chromatography
Immunogen	A synthesized peptide derived from human RNF20
Description	RNF20 is an E3 ubiquitin ligase protein that mediates monoubiquitination of histone H2B and the methylation of histone H3. It forms a ubiquitin ligase complex in cooperation with the E2 enzyme UBE2E1/UBCH6. It thereby plays a central role in histone code and gene regulation. It is required for transcriptional activation of Hox genes.
Storage Condition and Buffer	Rabbit IgG in phosphate buffered saline , pH 7.4, 150mM NaCl, 0.02% sodium azide and 50% glycerol. Store at +4°C short term. Store at -20°C long term. Avoid freeze / thaw cycle.

### RNF20 Antibody - Protein Information

**Name** RNF20

**Synonyms** BRE1A

#### Function

Component of the RNF20/40 E3 ubiquitin-protein ligase complex that mediates monoubiquitination of 'Lys-120' of histone H2B (H2BK120ub1). H2BK120ub1 gives a specific tag for epigenetic

transcriptional activation and is also prerequisite for histone H3 'Lys-4' and 'Lys-79' methylation (H3K4me and H3K79me, respectively). It thereby plays a central role in histone code and gene regulation. The RNF20/40 complex forms a H2B ubiquitin ligase complex in cooperation with the E2 enzyme UBE2A or UBE2B; reports about the cooperation with UBE2E1/UBCH are contradictory. Required for transcriptional activation of Hox genes. Recruited to the MDM2 promoter, probably by being recruited by p53/TP53, and thereby acts as a transcriptional coactivator. Mediates the polyubiquitination of isoform 2 of PA2G4 in cancer cells leading to its proteasome-mediated degradation.

**Cellular Location**

Nucleus

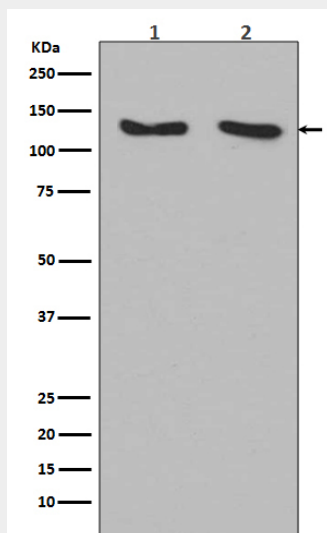
**Tissue Location**

Expressed in the normal brain and also in malignant gliomas (at protein level).

**RNF20 Antibody - Protocols**

Provided below are standard protocols that you may find useful for product applications.

- [Western Blot](#)
- [Blocking Peptides](#)
- [Dot Blot](#)
- [Immunohistochemistry](#)
- [Immunofluorescence](#)
- [Immunoprecipitation](#)
- [Flow Cytometry](#)
- [Cell Culture](#)

**RNF20 Antibody - Images**

Western blot analysis of RNF20 expression in (1) 293 cell lysate; (2) HeLa cell lysate.