

**Caveolin-3 Antibody**  
**Rabbit mAb**  
**Catalog # AP90078****Specification**

---

**Caveolin-3 Antibody - Product Information**

|                                      |                        |
|--------------------------------------|------------------------|
| Application                          | WB, IP                 |
| Primary Accession                    | <a href="#">P56539</a> |
| Reactivity                           | Rat                    |
| Clonality                            | Monoclonal             |
| <b>Other Names</b>                   |                        |
| CAV3; M-caveolin; Caveolin 3; VIP21; |                        |
| Isotype                              | Rabbit IgG             |
| Host                                 | Rabbit                 |
| Calculated MW                        | 17259 Da               |

**Caveolin-3 Antibody - Additional Information**

|                              |  |
|------------------------------|--|
| Dilution                     | WB~~1:1000<br>IP~~N/A  |
| Purification                 | Affinity-chromatography  |
| Immunogen                    | A synthesized peptide derived from human Caveolin-3  |
| Description                  | Caveolin-3 may act as a scaffolding protein within caveolar membranes. Interacts directly with G-protein alpha subunits and can functionally regulate their activity. Plays a role in the sarcolemma repair mechanism of both skeletal muscle and cardiomyocytes that permits rapid resealing of membranes disrupted by mechanical stress. |
| Storage Condition and Buffer | Rabbit IgG in phosphate buffered saline , pH 7.4, 150mM NaCl, 0.02% sodium azide and 50% glycerol. Store at +4°C short term. Store at -20°C long term. Avoid freeze / thaw cycle.  |

**Caveolin-3 Antibody - Protein Information****Name** CAV3**Function**

May act as a scaffolding protein within caveolar membranes. Interacts directly with G-protein alpha subunits and can functionally regulate their activity. May also regulate voltage-gated potassium channels. Plays a role in the sarcolemma repair mechanism of both skeletal muscle and cardiomyocytes that permits rapid resealing of membranes disrupted by mechanical stress (By similarity). Mediates the recruitment of CAVIN2 and CAVIN3 proteins to the caveolae (PubMed:<a

href="http://www.uniprot.org/citations/19262564" target="\_blank">19262564</a>).

#### Cellular Location

Golgi apparatus membrane; Peripheral membrane protein. Cell membrane {ECO:0000250|UniProtKB:P51638}; Peripheral membrane protein. Membrane, caveola {ECO:0000250|UniProtKB:P51637}; Peripheral membrane protein. Cell membrane, sarcolemma {ECO:0000250|UniProtKB:P51637}. Note=Potential hairpin-like structure in the membrane. Membrane protein of caveolae (By similarity)

#### Tissue Location

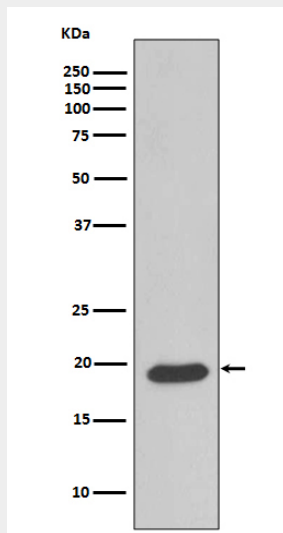
Expressed predominantly in muscle.

### Caveolin-3 Antibody - Protocols

Provided below are standard protocols that you may find useful for product applications.

- [Western Blot](#)
- [Blocking Peptides](#)
- [Dot Blot](#)
- [Immunohistochemistry](#)
- [Immunofluorescence](#)
- [Immunoprecipitation](#)
- [Flow Cytometry](#)
- [Cell Culture](#)

### Caveolin-3 Antibody - Images



Western blot analysis of Caveolin 3 expression in Human fetal heart lysate.